



GSM/GPRS/GPS Tracker **GV200**

## @Track Air Interface Protocol

Application Notes: TRACGV200AN003

Revision: 4.05



<http://www.queclink.com>

[sales@queclink.com](mailto:sales@queclink.com)

<b>Document Title</b>	GV200 @Track Air Interface Protocol
<b>Version</b>	4.05
<b>Date</b>	2012-4-23
<b>Status</b>	Release
<b>Document Control ID</b>	TRACGV200AN003

### **General Notes**

Queclink offers this information as a service to its customers, to support application and engineering efforts that use the products designed by Queclink. The information provided is based upon requirements specifically provided to Queclink by the customers. Queclink has not undertaken any independent search for additional relevant information, including any information that may be in the customer's possession. Furthermore, system validation of this product designed by Queclink within a larger electronic system remains the responsibility of the customer or the customer's system integrator. All specifications supplied herein are subject to change.

### **Copyright**

This document contains proprietary technical information which is the property of Queclink Limited. The copying of this document, distribution to others, and communication of the contents thereof, are forbidden without express authority. Offenders are liable to the payment of damages. All rights are reserved in the event of a patent grant or registration of a utility model or design. All specification supplied herein are subject to change without notice at any time.

*Copyright © Queclink Wireless Solutions Co., Ltd. 2011*

## Contents

Contents .....	2
0. Revision history .....	4
1. Overview .....	7
1.1. Scope of This Document .....	7
1.2. Terms and Abbreviation .....	7
2. System Architecture .....	8
3. Message Description .....	9
3.1. Message Format .....	9
3.2. Command And Acknowledgement .....	11
3.2.1. Bearer Setting Information .....	11
3.2.2. Backend Server Register Information .....	13
3.2.3. Quick Start Setting .....	16
3.2.4. Global Configuration .....	18
3.2.5. Tow Alarm Configuration .....	22
3.2.6. Digital Output .....	24
3.2.7. Analog Input Port Setting .....	27
3.2.8. Digital Input Port Setting .....	29
3.2.9. Input/Output Port Binding .....	31
3.2.10. Time Adjustment .....	33
3.2.11. Fixed Report Information .....	35
3.2.12. Geo-Fence Information .....	38
3.2.13. Speed Alarm .....	40
3.2.14. SOS Function .....	42
3.2.15. Voice Monitoring .....	44
3.2.16. Real Time Operation .....	46
3.2.17. Auto-unlock PIN .....	48
3.2.18. Second Serial Port Setting .....	50
3.2.19. Transparent Data Transmission .....	53
3.2.20. Outside Working Hours .....	55
3.2.21. Protocol Watchdog .....	58
3.2.22. Multi Analog Input Port Setting .....	60
3.2.23. Excessive Idling Detection .....	63
3.2.24. Hour Meter Counter .....	65
3.2.25. Harsh Behavior Monitoring .....	67
3.2.26. White List .....	70
3.2.27. Button Call Setting .....	72
3.3. Report .....	74
3.3.1. Position Related Report .....	74
3.3.2. Device Information Report .....	83
3.3.3. Report of Real Time Querying .....	86

3.3.4.	Event Report.....	107
3.3.5.	Buffer Report.....	121
3.3.6.	Transparent Data Transmission .....	122
3.3.7.	Report Google Maps Hyperlink .....	125
3.4.	Heartbeat .....	126
3.5.	Server Acknowledgement .....	127
4.	HEX Format Report Message .....	128
4.1.	Hex Report Mask .....	129
4.2.	Acknowledgement +ACK .....	134
4.3.	Location Report +RSP .....	137
4.4.	Information Report +INF .....	145
4.5.	Event Report +EVT.....	149
4.6.	Heartbeat Data +HBD .....	162
4.7.	Buffer Report in HEX Format.....	164
	Appendix: Message Index.....	165

## 0. Revision history

Revision	Date	Author	Description of change
V1.0	2011-01-13	Batty ZHANG	Initial
V2.0	2011-03-15	Hendry PAN	1.Add description for <b>+RESP:GTDAT</b> ; 2.Add corner field in <b>+RESP:GTFRI</b> .
V2.50	2011-04-01	Hendry PAN	1. Use one of the reserved field of <b>AT+GTCFG</b> as Add <i>&lt;5V Output Control&gt;</i> to enable or disable 5V output; 2. Modify description of GPS emergency mode. 3. Add new command <b>AT+GTIDL</b> for excessive idling detection; 4. Define <i>&lt;Report ID&gt;</i> and <i>&lt;Report Type&gt;</i> for watch dog reboot message <b>+RESP:GTDOG</b> .
V2.60	2011-04-14	Batty ZHANG	1. Use one of the reserved field of <b>AT+GTAIS</b> as <i>&lt;Debounce Time&gt;</i> to avoid exceptional voltage drop;
V3.00	2011-4-18	Hendry PAN	1. Change <i>&lt;Power Saving Enable&gt;</i> in <b>AT+GTCFG</b> to <i>&lt;Power Saving Mode&gt;</i> and add description for <i>&lt;Power Saving Mode&gt;</i> ; 2. Change description for <i>&lt;Location By Call&gt;</i> ; 3. Add new command <b>AT+GTHMC</b> for hour meter counter; 4. Use one of the reserved field of <b>AT+GTFRI</b> as <i>&lt;IGF Report Interval&gt;</i> to work when <i>&lt;Power Saving Mode&gt;</i> in <b>AT+GTCFG</b> is 2; 5. Add two new modes for <b>AT+GTMON</b> and modify <i>&lt;Stealthy Microphone&gt;</i> to change the volume of microphone. 6. Modify the description of <b>+RESP:GTMON</b> . 7. Add fields in <b>+RESP:GTRFI</b> , <b>+RESP:GTIGN</b> , <b>+RESP:GTIGF</b> to fill with hour meter counted when engine is on if hour meter counter function is enabled.
V3.1	2011-5-4	Batty ZHANG	1. Add a new message <b>+RESP:GTIGL</b> to report position when ignition is on. 2. Use three reserved fields of <b>AT+GTMAI</b> as <i>&lt;Sync with FRI&gt;</i> for three analog inputs: The device can send the analog input voltage periodically along with fixed report message. Set <i>&lt;Sync with FRI&gt;</i> to 1 to enable it, 0 to disable.

	2011-5-5	Hendry PAN	1. Use two reserved fields in <b>AT+GTSOS</b> as microphone and speaker volume when in SOS call.
V3.2	2011-6-7	Hendry PAN	<ol style="list-style-type: none"> <li>1. Add a new mode for <b>AT+GTSPD</b> to report <b>+RESP:GTSPD</b> message when current speed is within or outside of predefined speed range.</li> <li>2. Modify the description of <b>+RESP:GTFRI</b>.</li> <li>3. Add a new report mode to support UDP report using fixed local port. Modify <b>AT+GTSRI</b> and <b>AT+GTQSS</b> for this mode.</li> <li>4. Add a new command <b>AT+GTHBM</b> to monitor the harsh behavior of drive.</li> <li>5. Update the <b>+RESP:GTALL</b> message for the above changes.</li> <li>6. Add a bit in <i>&lt;Event Mask&gt;</i> in <b>AT+GTCFG</b> to configure that <b>+RESP:GTIGL</b> message should be sent to backend server or not.</li> </ol>
V3.25	2011-8-4	Hendry PAN	<ol style="list-style-type: none"> <li>1. Add a new parameter <i>&lt;Gsm Report&gt;</i> in the command <b>AT+GTCFG</b> to control how or when to report cells' information.</li> <li>2. Add the sub command "C" into the command <b>AT+GTRTO</b> to get current cell's information.</li> <li>3. Change <i>&lt;Buffer Enable&gt;</i> in <b>AT+GTSRI</b> and <b>AT+GTQSS</b> to <i>&lt;Buffer Mode&gt;</i> and add description for <i>&lt;Buffer Mode&gt;</i>;</li> <li>4. Extend the setting of <i>&lt;Location by Call&gt;</i> in command <b>AT+GTCFG</b> to support sending location information with Google Maps hyperlink through SMS to the cell phone number of the incoming call;</li> <li>5. Describe the report format of Google Maps hyperlink in chapter 3.3.7.</li> </ol>
V3.26	2011-09-28	Eagle LIU	<ol style="list-style-type: none"> <li>1. Add new command <b>AT+GTWLT</b> to support white list for location by call and voice monitoring.</li> <li>2. Add new command <b>AT+GTBCS</b> to support using digital inputs to make phone call to pre-set phone numbers.</li> </ol>
V3.27	2011-10-19	Steven LIU	<ol style="list-style-type: none"> <li>1. Add digital ports status message in <b>+RESP:GTFRI</b>.</li> <li>2. Modify <i>&lt;Report Mask &gt;</i> in <b>AT+GTFRI</b>.</li> </ol>
	2011-11-07	Hendry PAN	<ol style="list-style-type: none"> <li>1. Modify <i>&lt;Debounce Time&gt;</i> in <b>AT+GTDIS</b>.</li> <li>2. Add a new parameter <i>&lt;Maximum Call Time&gt;</i> in the command <b>AT+GTCFG</b> to add a call time limitation for a single incoming and outgoing call except ECC and SOS call.</li> <li>3. Add a new parameter <i>&lt;Hang-up Call&gt;</i> in the</li> </ol>

			<p>command <b>AT+GTBCS</b> to hang-up an active call which is not a stealthy voice call.</p> <p>4. Add a new type “TOW” for <b>+RESP:GTGSM</b>.</p>
V3.28	2011-12-09	Eric XU	<p>Modify the range of <i>&lt;Corner Report&gt;</i> in <b>AT+GTFRI</b> to 0-180.</p>
V4.0	2011-12-22	Eric Xu	<ol style="list-style-type: none"> <li>1. Add a new command <b>AT+GTURT</b> for the second serial port (UART2) setting.</li> <li>2. Define a long report format of <b>+RESP:GTDAT</b> message to report external device data with GPS information. Extend the <i>&lt;Command Type&gt;</i> of command <b>AT+GTDAT</b> to use the long report format <b>+RESP:GTDAT</b> message.</li> <li>3. Use one of the reserved field of <b>AT+GTSRI</b> and <b>AT+GTQSS</b> as <i>&lt;Protocol Format&gt;</i> to set the format of the report message.</li> <li>4. Add new command <b>AT+GTHRM</b> to customize the composition of the HEX report message.</li> <li>5. Describe HEX format report messages.</li> </ol>
4.02	2012-2-16	Eric Xu	<p>Modify the range of <i>&lt;Time to Stationary&gt;</i> in <b>AT+GTIDL</b> to 1-30mins.</p>
4.03	2012-2-22	Amy Yang	<p>GTCFG: update power saving mode.</p> <p>GTFRI: update <i>&lt;IGF Report Interval&gt;</i> range.</p>
4.04	2012-3-27	Gavin Chang && Eric Xu	<ol style="list-style-type: none"> <li>1. Modified the <i>&lt;Device name&gt;</i> in <b>AT+GTCFG</b> to support ‘-’ and ‘_’ in the string. All the description of <i>&lt;Device name&gt;</i> is modified in this version.</li> <li>2. Redefined longitude and latitude protocol parameter and modified the range of some parameter in EVT and RSP.</li> </ol>
4.05	2012-4-13	Gavin Chang	<ol style="list-style-type: none"> <li>1. Add the “Fixed Time or Mileage Report” of <i>&lt;mode&gt;</i> in <b>AT+GTFRI</b>.</li> <li>2. Add the report type of ignition off and ignition on in the <i>&lt;Report ID/Report Type&gt;</i> of the <b>GTIGL</b>.</li> </ol>

## 1. Overview

### 1.1. Scope of This Document

The @Track Air Interface Protocol is a digital communication interface based on printable ASCII characters over SMS or GPRS which is used for all communication between the backend server and the terminal. The backend server sends a command to the terminal and then the terminal confirms with an acknowledgement message. If necessary, the terminal also sends report messages to the backend server.

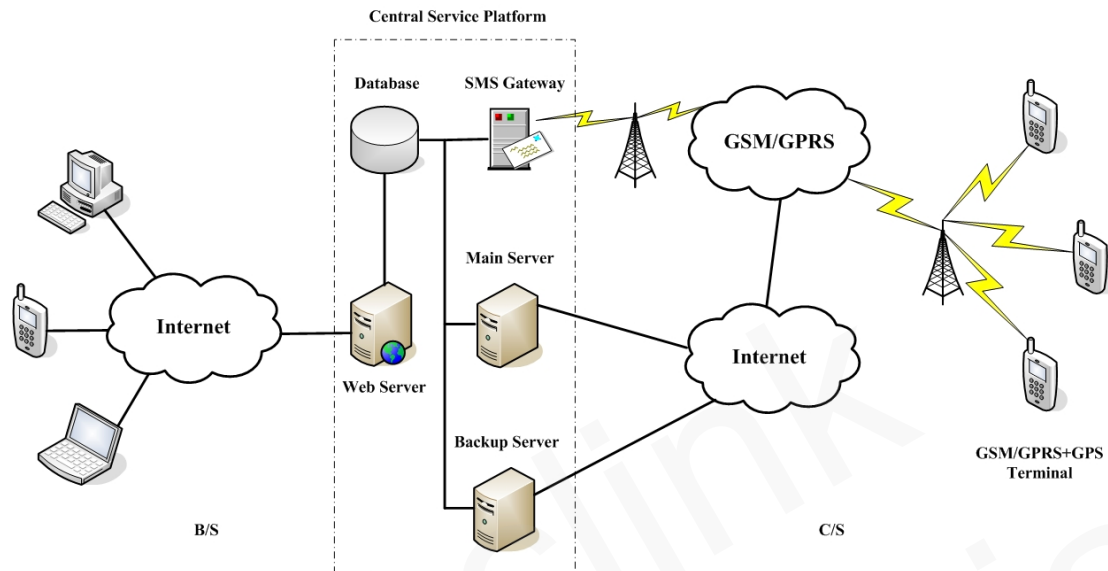
The purpose of this document is to describe how to build up the backend server based on the @Track Air Interface Protocol.

### 1.2. Terms and Abbreviation

Abbreviation	Description
APN	Access Point Network
ASCII	American National Standard Code for Information Interchange
GPRS	General Packet Radio Service
GSM	Global System for Mobile Communications
HDOP	Horizontal Dilution of Precision
ICCID	Integrated Circuit Card Identity
IP	Internet Protocol
SMS	Short Message Service
TCP	Transmission Control Protocol
UDP	User Datagram Protocol
UTC	Coordinated Universal Time



## 2. System Architecture



The backend server can be accessed by many terminals and should have the following abilities:

- ✧ The backend server should be able to access the internet and listen to the connection originating from the terminal.
- ✧ The backend server should be able to support a TCP or UDP connection with the terminal. It should be able to receive data from the terminal and send data to the terminal.
- ✧ The backend server should be able to receive and send SMS.

## 3. Message Description

### 3.1. Message Format

All of the @Track Air Interface Protocol messages are composed of printable ASCII characters. Each message has the following format:

Message format	Message type
AT+GTXXX=<parameter1>,<parameter2>,...\$	Command
+ACK:GTXXX,<parameter1>,<parameter2>,...\$	Acknowledgement
+RESP:GTXXX,<parameter1>,<parameter2>,...\$	Report

The entire message string ends with character '\$'.

The characters 'XXX' identify the deferent message.

The "<parameter1>,<parameter2>,..." carry the message's parameters. The number of parameters is different in different messages. The ASCII character ',' is used to separate the neighbouring parameter characters. The parameter string may contain the ASCII characters: '0'-'9', 'a'-'z', 'A'-'Z'.

Detailed descriptions of each message format are located in the specific message sections.

By sending Commands to the terminal, the backend server can either configure and query the parameters of the terminal or control the terminal to perform specific actions. When the terminal receives Commands over the air, it will reply with a corresponding Acknowledgement message.

According to the configuration of the parameters, the terminal can send Report messages to the backend server. Please see the following figure:

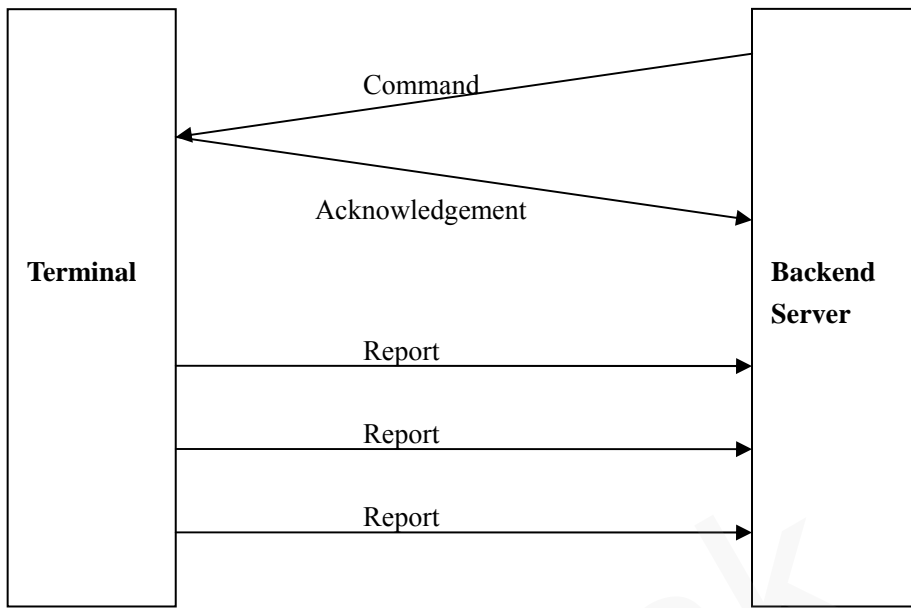


Figure 1: @Tracker Protocol messages flow

## 3.2. Command And Acknowledgement

### 3.2.1. Bearer Setting Information

The command **AT+GTBSI** is used to configure the GPRS parameters.

#### ➤ **AT+GTBSI=**

<b>Example:</b> <b>AT+GTBSI=gv200,cmnet,,,,,,,,,0000\$</b>			
<b>Parameter</b>	<b>Length(byte)</b>	<b>Range/Format</b>	<b>Default</b>
Password	4 – 6	'0' – '9' 'a' – 'z' 'A' – 'Z'	gv200
APN	<=40		
APN User Name	<=30		
APN Password	<=30		
Reserved	0		
Reserved	0		
Reserved	0		
Reserved	0		
Serial Number	4	0000 – FFFF	
Tail Character	1	\$	\$

- ✧ *<Password>*: The valid character of password is '0' – '9', 'a' – 'z', 'A' – 'Z'. The default value is "gv200".
- ✧ *<APN>*: Access point name (APN).
- ✧ *<APN User Name>*: the GPRS APN user name. If the parameter field is empty, the current value of this parameter will be cleared.
- ✧ *<APN Password>*: the GPRS APN password. If the parameter field is empty, the current value of this parameter will be cleared.
- ✧ *<Reserved>*: Not used at present. Please keep empty.
- ✧ *<Serial Number>*: the serial number for the command. It will be invoked in the ACK message of the command.
- ✧ *<Tail Character>*: a character to indicate the end of the command. And it must be "\$".

The acknowledgment message of **AT+GTBSI** command:

#### ➤ **+ACK:GTBSI,**

<b>Example:</b>			
<b>+ACK:GTBSI,040100,135790246811220,,0000,20090214093254,11F0\$</b>			
<b>Parameter</b>	<b>Length(byte)</b>	<b>Range/Format</b>	<b>Default</b>
Protocol Version	6	XX0000 – XXXFFF, X ∈ {'A' – 'Z', '0' – '9'}	
Unique ID	15	IMEI	
Device Name	<=10	'0' – '9' 'a' – 'z' 'A' – 'Z' '-' '_'	
Serial Number	4	0000 – FFFF	
Send Time	14	YYYYMMDDHHMMSS	
Count Number	4	0000 – FFFF	
Tail Character	1	\$	\$

- ✧ <Protocol Version>: The protocol version that the terminal conforms to. The first two characters XX point out the device type. 04 means GV200. The middle two characters point out the main version number of protocol and the last two characters point out the sub version number of protocol. And both of the main version and the minimum version are hex digital. For example, **020A** means version 2.10.
- ✧ <Unique ID>: The IMEI of the terminal.
- ✧ <Device Name>: The specified name of the device.
- ✧ <Serial Number>: A serial number which is equal to the <Serial Number> in the corresponding command to distinguish which command the ACK message is for.
- ✧ <Send Time>: The local time to send the ACK message.
- ✧ <Count Number>: A self-increasing count number in each acknowledgment message and report message. It begins from 0000 and increases by 1 for each message. And it rolls back after “FFFF”.
- ✧ <Tail Character>: a character to indicate the end of the command. Must be “\$”.

**Note:**

Only after both the command **AT+GTBSI** and **AT+GTSRI** are properly set, the ACK messages and other report messages can be sent to the backend server.

### 3.2.2. Backend Server Register Information

The command **AT+GTSRI** is used to configure where and how to report all the messages, including the server information and the communication method between the backend server and the terminal. When the terminal is configured correctly, it should be able to report data to the backend server.

#### ➤ **AT+GTSRI=**

<b>Example:</b>			
<b>AT+GTSRI=gv200,3,,1,116.226.44.17,7011,116.226.45.229,7012,+8613812341234,15,1,0,,,0001\$</b>			
<b>AT+GTSRI=gv200,3,,1,some.host.name,7011,116.226.45.229,7012,+8613812341234,15,1,0,,,0001\$</b>			
Parameter	Length(byte)	Range/Format	Default
Password	4 – 6	'0' – '9' 'a' – 'z' 'A' – 'Z'	gv200
Report Mode	1	0 – 6	0
Reserved	0		
Buffer Mode	1	0 1 2	1
Main Server IP / Domain Name	<=60		
Main Server Port	<=5	0 – 65535	
Backup Server IP	<=15		
Backup Server Port	<=5	0 – 65535	
SMS Gateway	<=20		
Heartbeat Interval	<=3	0 5 – 360min	0
SACK Enable	1	0 1	0
Protocol Format	1	0 1	0
Reserved	0		
Reserved	0		
Reserved	0		
Serial Number	4	0000 – FFFF	
Tail Character	1	\$	\$

✧ *<Report Mode>*: This defines the communication method between the backend server and the terminal. Supported report modes as following:

- 0: Stop reporting.
  - 1: TCP short-connection preferred mode. The connection is based on TCP protocol. The terminal connects to the backend server every time it needs to send data and will shut down the connection when the terminal finishes sending data. And if it fails to establish TCP connection to the backend server (both Main Server and Backup Server), it will try to send data via SMS to the SMS gateway.
  - 2: TCP short-connection forced mode. The connection is based on TCP protocol. The terminal connects to the backend server every time it needs to send data and will shut down the connection when the terminal finishes sending data. And if it fails to establish TCP connection to the backend server (both Main Server and Backup Server), it will store the data in the memory buffer if buffer report function is enabled. Otherwise the data is dropped.
  - 3: TCP long-connection mode. The connection is based on TCP protocol. The terminal connects to the backend server and maintains the connection using the heart beat data. The backend server should respond to the heart beat data from the terminals.
  - 4: UDP mode. The terminal will send data to the backend server by UDP protocol. Receiving protocol commands via UDP is supported if the GPRS network allows it. It is recommended to enable heartbeat sending and **+RESP:GTPDP** report when UDP receiving is the case.
  - 5: Force on SMS. Only use the SMS for transmitting.
  - 6: UDP with fixed local port. Like the UDP mode, the terminal will send data using UDP protocol. The difference is the terminal will use fixed local port rather than random port to communicate with the server in this mode. Thus the backend server could use identical port to communicate with all terminals if the backend server and the terminals are all in the same VPN network. The port number the device uses is the same as the port number of the primary server.
- ◇
- ◇ *<Buffer Mode>*: The working mode the buffer report function. When buffer report function is enabled, if the device goes into areas without GSM/GPRS network covering, it will stores all report locally. When the device goes back to areas with GSM/GPRS network covering, it will then send all the buffered reports through GPRS.
- 0: Disable the buffer report function.
  - 1: Low priority. Enable the buffer report function. Under this working mode, the device will send the buffered messages after sending the normal messages.
  - 2: High priority. Enable the buffer report function. Under this working mode, the device will send all the buffered messages before sending any normal message except for the SOS message (**+RESP:GTSOS**).
- ◇ *<Main Server IP / Domain Name>*: The IP address or the domain name of the primary server.
- ◇ *<Main Server Port>*: The port of the primary server.
- ◇ *<Backup Server IP>*: The IP address of the backup server.
- ◇ *<Backup Server Port>*: The port of the backup server.
- ◇ *<SMS Gateway>*: Maximum 20 characters including the optional national code starting with

“+” for SMS messages sending. Short code (for example: 10086) is also supported.

- ✧ *<Heartbeat Interval>*: the interval of sending heartbeat package message (+ACK:GTHBD) when report mode is TCP long-connection mode or UDP mode. If set to 0, no heartbeat package message sending.
- ✧ *<SACK Enable>*: This defines whether the backend server should respond to the terminal with SACK message when receiving messages from the terminal.
  - 0: the backend server does not reply SACK message after receiving message from the terminal.
  - 1: the backend server replies SACK message when receiving any message from the terminal.
- ✧ *<Protocol Format>*: This defines the format of the report message sent from the device to the backend server. 0 means using the ASCII format, 1 means the HEX format.

The acknowledgment message of AT+GTSRI command:

➤ +ACK:GTSRI,

<b>Example:</b>			
+ACK:GTSRI,040100,135790246811220,,0001,20090214093254,11F0\$			
Parameter	Length(byte)	Range/Format	Default
Protocol Version	6	XX0000 – XXXFFF, X ∈ {'A' – 'Z','0' – '9'}	
Unique ID	15	IMEI	
Device Name	<=10	'0' – '9' 'a' – 'z' 'A' – 'Z' ' ' ' _'	
Serial Number	4	0000 – FFFF	
Send Time	14	YYYYMMDDHHMMSS	
Count Number	4	0000 – FFFF	
Tail Character	1	\$	\$

**Note:**

Only after both the command AT+GTBSI and AT+GTSRI are properly set, the ACK messages and other report messages can be sent to the backend server.



### 3.2.3. Quick Start Setting

The command **AT+GTQSS** is used to configure the GPRS parameter and backend server information in one command if all these settings are within 160 bytes, otherwise use **AT+GTBSI** and **AT+GTSRI** in two steps.

➤ **AT+GTQSS=**

<b>Example:</b>			
<b>AT+GTQSS=gv200,cmnet,,3,1,116.226.44.17,7011,116.226.45.229,7012,+8613812341234,15,1,0,,0002\$</b>			
<b>Parameter</b>	<b>Length(byte)</b>	<b>Range/Format</b>	<b>Default</b>
Password	4 – 6	'0' – '9' 'a' – 'z' 'A' – 'Z'	gv200
APN	<=40		
APN User Name	<=30		
APN Password	<=30		
Report Mode	1	0 – 6	0
Reserved	0		
Buffer Mode	1	0 1 2	1
Main Server IP / Domain Name	<=60		
Main Server Port	<=5	0 – 65535	
Backup Server IP	<=15		
Backup Server Port	<=5	0 – 65535	
SMS Gateway	<=20		
Heartbeat Interval	<=3	0 5 – 360min	0
SACK Enable	1	0 1	0
Protocol Format	1	0 1	0
Reserved	0		
Serial Number	4	0000 – FFFF	
Tail Character	1	\$	\$

The acknowledgment message of **AT+GTQSS** command:

➤ **+ACK:GTQSS,**

<b>Example:</b> +ACK:GTQSS,040100,135790246811220,,0002,20090214093254,11F0\$			
<b>Parameter</b>	<b>Length(byte)</b>	<b>Range/Format</b>	<b>Default</b>
Protocol Version	6	XX0000 – XXXFFF, X ∈ {'A' – 'Z', '0' – '9'}	
Unique ID	15	IMEI	
Device Name	<=10	'0' – '9' 'a' – 'z' 'A' – 'Z' ' ' ' ' ' _'	
Serial Number	4	0000 – FFFF	
Send Time	14	YYYYMMDDHHMMSS	
Count Number	4	0000 – FFFF	
Tail Character	1	\$	\$



Tail Character	1	\$	\$
----------------	---	----	----

- ✧ *<New Password>*: Set to change the current password.
- ✧ *<Device Name>*: An ASCII string to represent the name of the device.
- ✧ *<ODO Enable>*: Enable/disable the odograph function to calculate the total mileage. The current mileage is included in every position report message.
- ✧ *<ODO Initial Mileage>*: The initial value for calculating the total mileage.
- ✧ *<GPS On Need>*: Whether to close GPS chip after retrieving GPS position information.
  - 0: Never close GPS chip
  - 1: Close GPS chip after retrieving GPS information every time.
- ✧ *<Report Items Mask>*: Bitwise report mask to configure the composition of report message, especially the GPS information composition.
  - Bit 0 for *<Speed>*
  - Bit 1 for *<Azimuth>*
  - Bit 2 for *<Altitude>*
  - Bit 3 for GSM tower data, including *<MCC>*, *<MNC>*, *<LAC>*, *<Cell ID>* and the *<reserved>* parameter "00"
  - Bit 4 for *<Mileage>*
  - Bit 5 for *<Send Time>*
  - Bit 6 for *<Device Name>*

For each bit, set it to 1 to enable corresponding component in the report, 0 to disable. This mask is effective to all report messages except fixed report.
- ✧ *<Power Saving Mode>*: Set mode of power saving function. If mode of power saving function is set to 0, and the *<IGF Report Interval>* in **AT+GTFRI** is not set to 0, the fixed report will report and its fix and send interval will be set to *<IGF Report Interval>* when the engine is off. If mode of power saving function is set to 1, the fixed report, geo-fence and speed alarm report functions are suspended when the device is at a standstill or the engine is off. If mode of power saving function is set to 2, it would like mode 1 if the *<IGF Report Interval>* in **AT+GTFRI** is set to 0, otherwise the fixed report will report and its fix and send interval will be set to *<IGF Report Interval>* in **AT+GTFRI** when the engine is off.
  - 0: Mode 0 of power saving function
  - 1: Mode 1 of power saving function
  - 2: Mode 2 of power saving function
- ✧ *<Gsm report>*: If GPS fixing for the report message **+RESP:GTSOS**, **+RESP:GTRTL**, **+RESP:GTLBC**, **+RESP:GTTOW** and **+RESP:GTFRI** were failed and the parameter *<Gsm report>* was set to 1, the terminal reports the message **+RESP:GTGSM**, including the information of the service cell and the neighbour cells after those messages if cell's information available. If it was set to 2, the terminal will report the message **+RESP:GTGSM** after getting GPS position successfully every time if cell's information available. If it was set to 3, the terminal will report **+RESP:GTGSM** no matter what result of getting GPS position every time if cell's information available.
  - 0: Not allow the cells' information report.
  - 1: Allow the cells' information report after failed to get GPS position if cell's information available.

- 2: Report the message **+RESP: GTGSM** after getting GPS position successfully every time if cell's information available.
  - 3: Report the message **+RESP:GTGSM** no matter what result of getting GPS position every time if cell's information available.
- ✧ *<Event Mask>*: Bitwise mask to configure which event report should be sent to the backend server.
- Bit 0 for **+RESP:GTPNA**
  - Bit 1 for **+RESP:GTPFA**
  - Bit 2 for **+RESP:GTMPN**
  - Bit 3 for **+RESP:GTMPF**
  - Bit 4 is reserved
  - Bit 5 for **+RESP:GTBPL**
  - Bit 6 for **+RESP:GTBTC**
  - Bit 7 for **+RESP:GTSTC**
  - Bit 8 for **+RESP:GTSTT**
  - Bit 9 for **+RESP:GTANT**
  - Bit 10 for **+RESP:GTPDP**
  - Bit 11 for the power on **+RESP:GTRTL**
  - Bit 12 for the ignition report **+RESP:GTIGN** and **+RESP:GTIGF**
  - Bit 13 for the ignition on location report **+RESP:GTIGL**
- For each bit, set it to 1 to enable corresponding event report, 0 to disable.
- ✧ *<Backup Battery On>*: Configure whether to enable backup battery, 1 to enable, 0 to disable. The backup battery will only be used when this parameter is set to 1 and the external power is not connected.
- ✧ *<LED On>*: Configure the working mode of power LED and GPS LED.
- 0: Each time the device powers on, both LED's will work for 30 minutes and then are turned off deadly.
  - 1: turn on Power LED and GPS LED if necessary.
- ✧ *<Info Report Enable>*: Enable/disable the device information report function (**+RESP:GTINF**). The device information include state of the device, ICCID, GSM signal strength, adapter connection status, backup battery enable setting, battery voltage, charging status, Power and GPS LED working mode, GPS on need setting, external GPS antenna status, the last known time of GPS fix, analog input voltage, all digit inputs and outputs status, time zone information and daylight saving setting..
- 0: Disable the device information report function.
  - 1: Enable the device information report function.
- ✧ *<Info Report Interval>*: The interval of reporting the device information.
- ✧ *<Location By Call>*: Configure how to handle the incoming call if *<Mode>* in **AT+GTMON** is not equal to 2 or 3.
- 0: Just hang up the call.
  - 1: Hang up the call and report the current position (**+RESP:GTLBC**).
  - 2: Hang up the call and report the current position with Google Map link through SMS to the phone number of the incoming call.
- ✧ *<Echo suppression>*: Configure to one of the four phases for echo suppression.

- 1: Cancel echo in the audio channel of the earphone.
  - 2: Cancel and weakly suppress echo in the audio channel of the earphone.
  - 3: Cancel and suppress echo in the audio channel of hands-free kit.
  - 4: Cancel and strongly suppress echo in the audio channel of hands-free kit
- ✧ <Backup Battery Charge Mode>: Control the charge mode of the backup battery.
- 0: When the main power supply is connected, charge the backup battery on need.
  - 1: When the main power supply is connected, only charge the backup battery when ignition on is detected. The charge process will begin 3 minutes after the ignition on. The charge process is stopped when ignition off.
- ✧ <5V Output Control>: Control 5V output.
- 0: Disable 5V output.
  - 1: Enable 5V output.
- ✧ <Maximum Call Time>: Maximum duration time for a single incoming and outgoing call except ECC or SOS call. It is formatted with 5 hour digits and 2 minute digits and 2 second digits and ranges from 00000:00:00– 99999:00:00. If it is 00000:00:00, the limitation is disabled. If a call time except ECC and SOS call reaches this limitation, the call will be disconnected.

The acknowledgment message of **AT+GTCFG** command:

➤ **+ACK:GTCFG,**

<b>Example:</b>			
<b>+ACK:GTCFG,040100,135790246811220,,0003,20090214093254,11F0\$</b>			
<b>Parameter</b>	<b>Length(byte)</b>	<b>Range/Format</b>	<b>Default</b>
Protocol Version	6	XX0000 – XXXFFF, X ∈ {'A' – 'Z','0' – '9'}	
Unique ID	15	IMEI	
Device Name	<=10	'0' – '9' 'a' – 'z' 'A' – 'Z' ' ' ' _'	
Serial Number	4	0000 – FFFF	
Send Time	14	YYYYMMDDHHMMSS	
Count Number	4	0000 – FFFF	
Tail Character	1	\$	\$

### 3.2.5. Tow Alarm Configuration

The **AT+GTTOW** command is used to configure the motion sensor and the parameters for tow alarm.

➤ **AT+GTTOW=**

<b>Example:</b> <b>AT+GTTOW=gv200,1,5,0,120,1,0,5,10,4,10,4,,,,,,,,,0004\$</b>			
<b>Parameter</b>	<b>Length(byte)</b>	<b>Range/Format</b>	<b>Default</b>
Password	4 – 6	'0' – '9' 'a' – 'z' 'A' – 'Z'	gv200
Tow Enable	1	0 1	0
Engine Off to Tow	<=2	5 – 15 min	10
Fake Tow Delay	<=2	0 – 10 min	1
Tow Interval	<=5	30 – 86400 sec	300
Tow Output ID	1	0 – 4	
Tow Output Status	1	0 1	
Tow Output Duration	<=3	0 – 255 (×100ms)	0
Tow Output Toggle Times	<=3	0 – 255	0
Rest Duration	<=3	1 – 255 (×15sec)	2
Motion Duration	<=2	1 – 10 (×100ms)	3
Motion Threshold	1	2 – 4	2
Reserved	0		
Reserved	0		
Reserved	0		
Reserved	0		
Reserved	0		
Reserved	0		
Reserved	0		
Reserved	0		
Reserved	0		
Serial Number	4	0000 – FFFF	
Tail Character	1	\$	\$

✧ <Tow Enable>: Enable or disable tow alarm (+**RESP:GTTOW**).

- 0: Disable the tow alarm
  - 1: Enable the tow alarm
- ✧ *<Engine Off to Tow>*: A time parameter to judge whether the device is considered being towed after the engine off. If the motion sensor doesn't detect stillness within the specified time after engine off, the device is being towed.
  - ✧ *<Fake Tow Delay>*: After engine off and stillness detected, if the motion sensor detects moving again, the device turns into a state called fake tow. If the device keeps in fake tow after a period of time defined by the parameter *<Fake Tow Delay>*, it is considered being towed.
  - ✧ *<Tow Interval>*: The period to send tow alarm message.
  - ✧ *<Tow Output ID>*: The ID of the output port to output the specified wave shape when tow event is detected.
  - ✧ *<Tow Output Status>*: Please refer to the parameter *<Output 1 - 4 Status>* in the chapter 3.2.6.
  - ✧ *<Tow Output Duration>*: Please refer to the parameter *<Duration>* in the chapter 3.2.6.
  - ✧ *<Tow Output Toggle Times>*: Please refer to the parameter *<Toggle Times>* in the chapter 3.2.6.
  - ✧ *<Rest Duration>*: A time parameter to make sure that the device enters stillness status, i.e. the status of the device will be changed to stillness if the motion sensor detects stillness and maintains for a period of time defined by the parameter *<Rest Duration>*.
  - ✧ *<Motion Duration>*: A time parameter to make sure that the device enters motion status, i.e. the status of the device will be changed to motion if the motion sensor detects motion and maintains for a period of time defined by the parameter *<Motion Duration>*.
  - ✧ *<Motion Threshold>*: The threshold for the motion sensor to measure whether the device is moving.

The acknowledgment message of **AT+GTTOW** command:

➤ **+ACK:GTTOW,**

<b>Example:</b>			
<b>+ACK:GTTOW,040100,135790246811220,,0004,20090214093254,11F0\$</b>			
<b>Parameter</b>	<b>Length(byte)</b>	<b>Range/Format</b>	<b>Default</b>
Protocol Version	6	XX0000 – XXFFFF, X ∈ {'A' – 'Z','0' – '9'}	
Unique ID	15	IMEI	
Device Name	<=10	'0' – '9' 'a' – 'z' 'A' – 'Z' '-' '_'	
Serial Number	4	0000 – FFFF	
Send Time	14	YYYYMMDDHHMMSS	
Count Number	4	0000 – FFFF	
Tail Character	1	\$	\$



### 3.2.6. Digital Output

The **AT+GTOUT** command is used to output specified wave shape from the digital output ports. Total three wave shapes is supported as below. If set to wave shape 1, the device will maintain this wave shape at the specified output port after power reset.

#### Wave shape 1:

✓  $\langle \text{Duration} \rangle = 0\text{ms}$ ,  $\langle \text{Toggle Times} \rangle = 0$

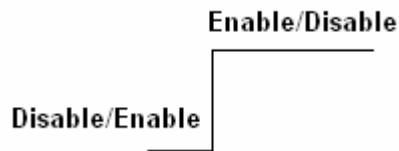


Figure 2: Wave Shape 1

#### Wave shape 2:

✓  $\langle \text{Duration} \rangle = 500\text{ms}$ ,  $\langle \text{Toggle Times} \rangle = 1$

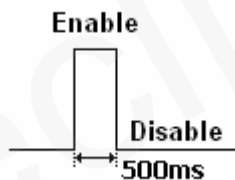


Figure 3: Wave Shape 2

#### Wave shape 3:

✓  $\langle \text{Duration} \rangle = 800\text{ms}$ ,  $\langle \text{Toggle Times} \rangle = 3$

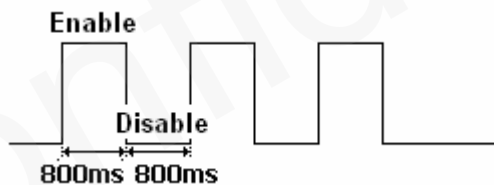


Figure 4: Wave Shape 3

#### ➤ AT+GTOUT=

##### Example:

**AT+GTOUT=gv200,1,0,0,0,0,0,0,5,1,0,8,3,,,,,0005\$**

Parameter	Length(byte)	Range/Format	Default
Password	4 – 6	'0' – '9' 'a' – 'z' 'A' – 'Z'	gv200
Output1 Status	1	0 1	0
Duration	$\leq 3$	0 – 255( $\times 100\text{ms}$ )	0

Toggle Times	<=3	0 – 255	0
Output2 Status	1	0 1	0
Duration	<=3	0 – 255(×100ms)	0
Toggle Times	<=3	0 – 255	0
Output3 Status	1	0 1	0
Duration	<=3	0 – 255(×100ms)	0
Toggle Times	<=3	0 – 255	0
Output4 Status	1	0 1	0
Duration	<=3	0 – 255(×100ms)	0
Toggle Times	<=3	0 – 255	0
Long Relay Operation	<=3	0 – 120min	0
Reserved	0		
Reserved	0		
Reserved	0		
Serial Number	4	0000 – FFFF	
Tail Character	1	\$	\$

- ✧ <Output1 - 4 Status>: Used only for the wave shape 1 as shown in **Figure 2** to set the final status of the output port.
  - 0: Disable status.
  - 1: Enable status.
- ✧ <Duration>: Please refer to **Figure 2**, **Figure 3** and **Figure 4**. Unit is 100ms.
- ✧ <Toggle Times>: Please refer to **Figure 2**, **Figure 3** and **Figure 4**.
- ✧ <Long Relay Operation>: Output wave 1 for a long time as specified by this parameter on output port which has built-in relay. After the specified time, restore the status of the output.

The acknowledgment message of AT+GTOUT command:

➤ +ACK:GTOUT,

<b>Example:</b> +ACK:GTOUT,040100,135790246811220,,0005,20090214093254,11F0\$			
Parameter	Length(byte)	Range/Format	Default
Protocol Version	6	XX0000 – XXFFFF, X ∈ {'A' – 'Z','0' – '9'}	
Unique ID	15	IMEI	

Device Name	<=10	'0' – '9' 'a' – 'z' 'A' – 'Z' ' ' ' _	
Serial Number	4	0000 – FFFF	
Send Time	14	YYYYMMDDHHMMSS	
Count Number	4	0000 – FFFF	
Tail Character	1	\$	\$

### 3.2.7. Analog Input Port Setting

The command **AT+GTAIS** is used to configure the parameters of analog input port.

➤ **AT+GTAIS=**

<b>Example:</b> <b>AT+GTAIS=gv200,2,250,12000,3,2,1,1,0,0,1,,,0006\$</b>			
<b>Parameter</b>	<b>Length(byte)</b>	<b>Range/Format</b>	<b>Default</b>
Password	4 – 6	'0' – '9' 'a' – 'z' 'A' – 'Z'	gv200
Mode	1	0 1 2	0
Min Threshold	<=5	250 – 28000 mV	
Max Threshold	<=5	250 – 28000 mV	
Sample Period	<=2	0 1 – 12(×2s)	0
Debounce Time	1	0 – 5 (×1s)	0
Output ID	1	0 – 4	
Output Status	1	0 1	
Duration	<=3	0 – 255(×100ms)	0
Toggle Times	<=3	0 – 255	0
Sync with FRI	1	0 1	0
Reserved	0		
Reserved	0		
Reserved	0		
Serial Number	4	0000 – FFFF	
Tail Character	1	\$	\$

- ✧ **<Mode>**: Working mode of the analog input alarm (**+RESP :GTAIS**).
  - 0: Disable analog input alarm.
  - 1: Enable analog input alarm. If the current input voltage is within the range of (**<Min Threshold>**, **<Max Threshold>**), the alarm will be triggered.
  - 2: Enable analog input alarm. If the current input voltage is outside the range of (**<Min Threshold>**, **<Max Threshold>**), the alarm will be triggered.
- ✧ **<Min Threshold>**: The lower limit to the voltage of the analog input port to trigger the alarm.
- ✧ **<Max Threshold>**: The upper limit to the voltage of the analog input port to trigger the alarm.
- ✧ **<Sample Period>**: The sampling period of the analog input port.

- ✧ <Debounce Time>: The time for debouncing to avoid exceptional voltage drop on analog input port.
- ✧ <Output ID>: Specify the ID of the output port (1 to 4) to output specified wave shape when the analog input alarm is triggered. If set to 0, no output wave.
- ✧ <Sync with FRI>: Besides the alarm report of analog input, the device can also send the analog input voltage periodically along with fixed report message. Set this field to 1 to enable it, 0 to disable.

The acknowledgment message of **AT+GTAIS** command:

➤ **+ACK:GTAIS,**

<b>Example:</b>			
<b>+ACK:GTAIS,040100,135790246811220,,0006,20090214093254,11F0\$</b>			
<b>Parameter</b>	<b>Length(byte)</b>	<b>Range/Format</b>	<b>Default</b>
Protocol Version	6	XX0000 – XXFFFF, X ∈ {'A' – 'Z','0' – '9'}	
Unique ID	15	IMEI	
Device Name	<=10	'0' – '9' 'a' – 'z' 'A' – 'Z' '-' '_'	
Serial Number	4	0000 – FFFF	
Send Time	14	YYYYMMDDHHMMSS	
Count Number	4	0000 – FFFF	
Tail Character	1	\$	\$

### 3.2.8. Digital Input Port Setting

The command **AT+GTDIS** is used to configure the parameters of 4 digital input ports. Input ID 1 is dedicated for ignition detection. The rest three inputs are customizable. If the logical status is changed on one of the three digital inputs port, the device will report message **+RESP:GTDIS** to the backend server.

#### ➤ AT+GTDIS=

<b>Example:</b>			
<b>AT+GTDIS=gv200,1,2,3,2,1,4,3,1,2,4,3,4,,,,,,0007\$</b>			
<b>Parameter</b>	<b>Length(byte)</b>	<b>Range/Format</b>	<b>Default</b>
Password	4 – 6	'0' – '9' 'a' – 'z' 'A' – 'Z'	gv200
Input ID 1	1	1	1
Sample Period	<=2	0 1 – 12(×2s)	1
Debounce Time	<=2	0 – 400(×50ms)	2
Input ID 2	1	2	2
Enable	1	0 1	0
Debounce Time	<=2	0 – 20(×10ms)	0
Input ID 3	1	3	3
Enable	1	0 1	0
Debounce Time	<=2	0 – 20(×10ms)	0
Input ID 4	1	4	4
Sample Period	<=2	0 1 – 12(×2s)	0
Debounce Time	<=2	0 – 400(×50ms)	0
Reserved	0		
Reserved	0		
Reserved	0		
Reserved	0		
Reserved	0		
Serial Number	4	0000 – FFFF	
Tail Character	1	\$	\$

✧ <Input ID 1~4>: the digital input port ID.

✧ <Sample Period>: the sampling period of the non-interruptible input port.

✧ <Enable>: Enable or disable the interrupt input.

- 0: Disable
- 1: Enable

◇ *<Debounce Time>*: The time for debouncing. For non-interrupt input ports, this time should be shorter than *<Sample Period>* and during debouncing, the device will check the status of the digital input every 50ms. If the status of the digital input changes before sampling and keeps no change within *<Debounce Time>*, then the logical status of the digital input is changed.

The acknowledgment message of **AT+GTDIS** command:

➤ **+ACK:GTDIS,**

<b>Example:</b>			
<b>+ACK:GTDIS,040100,135790246811220,,0007,20090214093254,11F0\$</b>			
<b>Parameter</b>	<b>Length(byte)</b>	<b>Range/Format</b>	<b>Default</b>
Protocol Version	6	XX0000 – XXFFFF, X ∈ {'A' – 'Z','0' – '9'}	
Unique ID	15	IMEI	
Device Name	<=10	'0' – '9' 'a' – 'z' 'A' – 'Z' '-' '_'	
Serial Number	4	0000 – FFFF	
Send Time	14	YYYYMMDDHHMMSS	
Count Number	4	0000 – FFFF	
Tail Character	1	\$	\$

### 3.2.9. Input/Output Port Binding

This command is used to configure the user defined output-port action triggered by input ports. If the IO combination is set and the corresponding condition appears, the device will output specified wave shape on the specified output port. And the device will report message +**RESP:GTIOB** to the backend server when the logical status of bound input ports changes.

#### ➤ AT+GTIOB=

<b>Example:</b>			
<b>AT+GTIOB=gv200,1,1A,A,3,1,0,8,3,,,,,0008\$</b>			
<b>Parameter</b>	<b>Length(byte)</b>	<b>Range/Format</b>	<b>Default</b>
Password	4 – 6	'0' – '9' 'a' – 'z' 'A' – 'Z'	gv200
IOB ID	1	0 – 3	
Input Mask	<=2	0 – 1F	0
Trigger Mask	<=2	0 – 1F	0
Input Sample Period	<=2	0 1 – 12(×2s)	0
Output ID	1	0 – 4	0
Output Status	1	0 1	0
Duration	<=3	0 – 255(×100ms)	0
Toggle Times	<=3	0 – 255	0
Reserved	0		
Reserved	0		
Reserved	0		
Reserved	0		
Serial Number	4	0000 – FFFF	
Tail Character	1	\$	\$

- ✧ <IOB ID>: ID of the user defined IO binding.
- ✧ <Input Mask>: Bitwise mask for input ports composition. Each bit, from bit 0 to bit 3, represents one digital input port. Set to 1 to enable and 0 to disable corresponding input port.
  - bit0: digital input 1
  - bit1: digital input 2
  - bit2: digital input 3
  - bit3: digital input 4
- ✧ <Trigger Mask>: bitwise mask for trigger condition composition of the corresponding input ports. Each bit, from bit 0 to bit 3, represents the logical status of the corresponding input



port to trigger the IOB event. Set to 1 to use enable status as the trigger condition and 0 to use disable status. Only when the logical status of all the input ports in one IO binding meets the trigger condition is the IOB event triggered.

- bit0: digital input 1
  - bit1: digital input 2
  - bit2: digital input 3
  - bit3: digital input 4
- ✧ *<Input Sample Period>*: The period to check the status of all the digital input ports in one IO binding. **AT+GTIOB** and **AT+GTDIS** use independent sample period to check the input port status even for the same input port.
- ✧ *<Output ID>*: ID of the output port to output specified wave when the trigger condition meets. 0 means no wave will be output.

The acknowledgment message of **AT+GTIOB** command:

➤ **+ACK:GTIOB,**

<b>Example:</b>			
<b>+ACK:GTIOB,040100,135790246811220,,1,0008,20090214093254,11F0\$</b>			
<b>Parameter</b>	<b>Length(byte)</b>	<b>Range/Format</b>	<b>Default</b>
Protocol Version	6	XX0000 – XXXFFF, X ∈ {‘A’ – ‘Z’, ‘0’ – ‘9’}	
Unique ID	15	IMEI	
Device Name	<=10	'0' – '9' 'a' – 'z' 'A' – 'Z' '-' '_'	
IOB ID	1	0 – 3	
Serial Number	4	0000 – FFFF	
Send Time	14	YYYYMMDDHHMMSS	
Count Number	4	0000 – FFFF	
Tail Character	1	\$	\$

### 3.2.10. Time Adjustment

The command **AT+GTTMA** is used to adjust the local time of the device remotely. Upon this command, the device will set the time zone and daylight saving accordingly. Then it will use the given UTC time to adjust the local time based on the time zone and daylight saving setting. This command will also trigger the device to start GPS. After a successful GPS fix, the device will update the local time with the GPS UTC time again.

#### ➤ **AT+GTTMA=**

<b>Example:</b>			
<b>AT+GTTMA=gv200,-,3,30,0,20090917203500,,,,,0009\$</b>			
<b>Parameter</b>	<b>Length(byte)</b>	<b>Range/Format</b>	<b>Default</b>
Password	4 – 6	'0' – '9' 'a' – 'z' 'A' – 'Z'	gv200
Sign	1	+ -	+
Hour Offset	<=2	0 – 23	
Minute Offset	<=2	0 – 59	
Daylight Saving	1	0 1	
UTC Time	14	YYYYMMDDHHMMSS	
Reserved	0		
Reserved	0		
Reserved	0		
Reserved	0		
Serial Number	4	0000 – FFFF	
Tail Character			

- ✧ <Sign>: Indicate the positive or negative of the local time offset to UTC
- ✧ <Hour Offset>: UTC offset in hours
- ✧ <Minute Offset>: UTC offset in minutes
- ✧ <Daylight Saving>: Enable/disable daylight saving time.
  - 0: Disable daylight saving
  - 1: Enable daylight saving
- ✧ <UTC time>: UTC time to adjust the local time..

The acknowledgment message of **AT+GTTMA** command:

#### ➤ **+ACK:GTTMA,**

**Example:**

<b>+ACK:GTTMA,040100,135790246811220,,0009,20090214093254,11F0\$</b>			
<b>Parameter</b>	<b>Length(byte)</b>	<b>Range/Format</b>	<b>Default</b>
Protocol Version	6	XX0000 – XXXFFF, X ∈ {‘A’ – ‘Z’, ‘0’ – ‘9’}	
Unique ID	15	IMEI	
Device Name	<=10	'0' – '9' 'a' – 'z' 'A' – 'Z' '-' ' ' '_'	
Serial Number	4	0000 – FFFF	
Send Time	14	YYYYMMDDHHMMSS	
Count Number	4	0000 – FFFF	
Tail Character	1	\$	\$

### 3.2.11. Fixed Report Information

The command **AT+GTFRI** is used to configure the parameters of scheduled report (**+RESP:GTFRI**).

➤ **AT+GTFRI=**

<b>Example:</b>			
<b>AT+GTFRI=gv200,0,,,,,,,,,,,,,000A\$</b>			
<b>AT+GTFRI=gv200,1,1,0,1,1000,2300,180,30,,,21,,600,,,000A\$</b>			
<b>AT+GTFRI=gv200,2,1,0,1,1000,2300,,,500,,31,,,,000A\$</b>			
<b>AT+GTFRI=gv200,3,1,0,1,1000,2300,,,1000,0,,,000A\$</b>			
<b>AT+GTFRI=gv200,4,1,0,1,1000,2300,,60,,300,0,,,000A\$</b>			
Parameter	Length(byte)	Range/Format	Default
Password	4 – 6	'0' – '9' 'a' – 'z' 'A' – 'Z'	gv200
Mode	1	0 – 4	0
Discard No Fix	<=2	0 1	1
Max Send	<=5	0 – 65535	0
Period Enable	1	0 1	1
Start Time	4	HHMM	0000
End Time	4	HHMM	0000
Check Interval	<=5	30 – 86400sec	180
Send Interval	<=5	5 – 86400sec	30
Distance	<=5	50 – 65535m	1000
Mileage	<=5	50 – 65535m	1000
Report Mask	<=4	0000 – FFFF	3F
Corner Report	<=3	0 – 180	0
IGF Report Interval	<=5	0 5-86400sec	600
Reserved	0		
Reserved	0		
Serial Number	4	0000 – FFFF	
Tail Character	1	\$	\$

◇ *<Mode>*: The working mode of the fixed report.

- 0: Disable this function.
- 1: Fixed Timing Report. The positional report message is sent to the backend server

periodically according to the parameter *<Send Interval>*.

- 2: Fixed Distance Report. The positional report message is sent to the backend server when the straight-line distance between the current GPS position and the last sent GPS position is greater than or equal to the distance specified by parameter *<Distance>*.
  - 3: Fixed Mileage Report. The positional report message is sent to the backend server when the path length between the current GPS position and the last sent GPS position is greater than or equal to the mileage specified by parameter *<Mileage>*. This function need connect the vehicle ignition signal to the specified digital input port of the device.
  - 4: Optimum Report. Simultaneously observe both time interval and path length between two adjacent reports. Report device position if the calculated time interval per current time against the last report time is greater than the *<Send Interval>*, and the length of path between the current position and the last position is greater than the *<Mileage>* setting. This function need connect the vehicle ignition signal to the specified digital input port of the device.
- ◇ *<Discard No Fix>*: Disable/enable reporting when there is no GPS fixing
- 0: Enable reporting
  - 1: Disable reporting
- ◇ *<Max Send>*: the maximum times of reporting. 0 means to no limit.
- ◇ *<Period Enable>*: Disable/enable the time range specified by *<Start time>* and *<End time>*. If the time range is enabled, the position reporting is limited within the time range.
- ◇ *<Start Time>*: The start time of the scheduled fixed report. The valid format is “HHMM”. The value range of “HH” is “00”–“23”. The value range of “MM” is “00”–“59”.
- ◇ *<End Time>*: The end time of the scheduled fixed report. The valid format and range are same as *<Start Time>*.
- ◇ *<Check Interval>*: The interval time to fix GPS, its value range is 30 – 86400 and the unit is second. The parameter is used only when the parameter *<GPS On Need>* in **AT+GTCFG** is set to 1.
- If *<GPS On Need>* was set as 1, the device has two modes to operate the GPS module according to the value of *<Check Interval>*:
- “Normal mode”: If the *<Check Interval>* is no less than 60 seconds, the terminal will close the GPS chip every time after GPS fixing finishes in order to save power.
  - “Emergency mode”: If the *<Check Interval>* is less than 60 seconds, the terminal will never close the GPS chip unless *<Power Saving Enable>* is 1 and the state in +RESP:GTINF is 0x16(Tow) or 0x1A(Fake Tow) or 0x11(Ignition Off Rest) or 0x12(Ignition Off Motion) or 0x41(Sensor Rest). In this mode, the *<Send Interval>* will be ignored, the terminal reports every *<Check Interval>* time, and the *<Check Interval>* will be forced to 30 seconds if it is less than 30 seconds.
- Due to the limitation of the maximum report message length, it must be assured that:  $\text{<Send Interval> / <Check Interval>} \leq 15$ .
- ◇ *<Send Interval>*: Period to send the position information. The value range is 5 – 86400 and the unit is second. If *<report mode>* in **AT+GTSRI** is set to force on SMS, this should be greater than 15 seconds.

- ✧ *<Distance>*: the specified distance to send the position information when *<Mode>* is 2. Unit: meter.
- ✧ *<Mileage>*: the specified length to send the position information when *<Mode>* is 3 and 4. Unit: meter.
- ✧ *<Report Mask>*: Bitwise report mask to configure the composition of the fixed report message.
  - Bit 0 for *<Speed>*
  - Bit 1 for *<Azimuth>*
  - Bit 2 for *<Altitude>*
  - Bit 3 for GSM tower data, including *<MCC>*, *<MNC>*, *<LAC>*, *<Cell ID>* and the *<reserved>* parameter “00”
  - Bit 4 for *<Mileage>*
  - Bit 5 for *<Send Time>*
  - Bit 6 for *<Digital Ports Status>*

For each bit, set it to 1 to enable corresponding component in the report, 0 to disable. This mask is effective only to the fixed report.

- ✧ *<Corner Report>*: The threshold to determine whether the device is turning around a corner. 0 to disable the corner report. For other values, the device will compare the current heading with the last known corner, if the difference is greater than or equal to this value, send the corner report with **+RESP: GTFRI**.
- ✧ *<IGF Report Interval>*: Period to fix and send the position information when *<Power Saving Mode>* in **AT+GTCFG** is set to 2 and the engine is off and if *<Mode>* is set to 1 (Fixed Timing Report). Its value range is 300 – 86400 and the unit is second, 0 to disable.

The acknowledgment message of **AT+GTFRI** command:

➤ **+ACK:GTFRI,**

<b>Example:</b>			
<b>+ACK:GTFRI,040100,135790246811220,,000A,20090214093254,11F0\$</b>			
<b>Parameter</b>	<b>Length(byte)</b>	<b>Range/Format</b>	<b>Default</b>
Protocol Version	6	XX0000 – XXFFFF, X ∈ {‘A’ – ‘Z’, ‘0’ – ‘9’}	
Unique ID	15	IMEI	
Device Name	≤10	'0' – '9' 'a' – 'z' 'A' – 'Z' '-' '_'	
Serial Number	4	0000 – FFFF	
Send Time	14	YYYYMMDDHHMMSS	
Count Number	4	0000 – FFFF	
Tail Character	1	\$	\$

### 3.2.12. Geo-Fence Information

The command **AT+GTGEO** is used to configure the parameters of Geo-Fence. (Geo-Fence is a virtual perimeter on a geographic area using a location-based service, so that when the geofencing terminal enters or exits the area a notification is generated. The notification can contain information about the location of the terminal and may be sent to the backend server.)

#### ➤ AT+GTGEO=

<b>Example:</b> AT+GTGEO=gv200,0,3,121.412248,31.187891,1000,600,1,1,0,0,,,,,000B\$			
Parameter	Length(byte)	Range/Format	Default
Password	4 – 6	'0' – '9' 'a' – 'z' 'A' – 'Z'	gv200
GEO ID	1	0 – 4	
Mode	1	0 – 3	0
Longitude	<=11	(-)xxx.xxxxxx	
Latitude	<=10	(-)xx.xxxxxx	
Radius	<=7	50 – 6000000m	50
Check Interval	<=5	0 5 – 86400sec	0
Output ID	1	0 – 4	0
Output Status	1	0 1	
Duration	<=3	0 – 255(×100ms)	0
Toggle Times	<=3	0 – 255	0
Reserved	0		
Reserved	0		
Reserved	0		
Reserved	0		
Serial Number	4	0000 – FFFF	
Tail Character	1	\$	\$

- ✧ <GEO ID>: ID of the Geo-Fence. Total five zones, 0 to 4, are supported.
- ✧ <Mode>: The working mode of the Geo-Fence to report the message +RESP:GTGEO to the backend server.
  - 0: disable the zone's Geo-Fence function.
  - 1: Entering the zone. The report will be generated only when the terminal enters the Geo-Fence.

- 2: Exiting the zone. The report will be generated only when the terminal exits from the Geo-Fence.
- 3: Both entering and exiting.
- ✧ <Longitude>: The longitude of a point which is defined as the center of the Geo-Fence circular region. The format is “(-)xxx.xxxxxx” and the value range is from “-180.000000” to “180.000000”. The unit is degree. West longitude is defined as negative starting with minus “-” and east longitude is defined as positive without “+”.
- ✧ <Latitude>: The latitude of a point which is defined as the centre of the Geo-Fence circular region. The format is “(-)xx.xxxxxx” and the value range is from “-90.000000” to “90.000000”. The unit is degree. South Latitude is defined as negative starting with minus “-” and north Latitude is defined as positive without “+”.
- ✧ <Radius>: The radius of the Geo-Fence circular region. The value range is (50 – 6000000) and the unit is meter.
- ✧ <Check Interval>: The interval of GPS checking for the Geo-Fence alarm.

The acknowledgment message of **AT+GTGEO** command:

➤ **+ACK:GTGEO,**

<b>Example:</b>			
<b>+ACK:GTGEO,040100,135790246811220,,0,000B,20090214093254,11F0\$</b>			
<b>Parameter</b>	<b>Length(byte)</b>	<b>Range/Format</b>	<b>Default</b>
Protocol Version	6	XX0000 – XXFFFF, X ∈ {‘A’ – ‘Z’, ‘0’ – ‘9’}	
Unique ID	15	IMEI	
Device Name	<=10	'0' – '9' 'a' – 'z' 'A' – 'Z' '-' '_'	
GEO ID	1	0 – 4	
Serial Number	4	0000 – FFFF	
Send Time	14	YYYYMMDDHHMMSS	
Count Number	4	0000 – FFFF	
Tail Character	1	\$	\$



### 3.2.13. Speed Alarm

This command is used to set a speed-alarm range for the terminal. According to the working mode, the terminal will report message **+RESP:GTSPD** to the backend server when its moving speed is outside or inside of the range.

#### ➤ AT+GTSPD=

<b>Example:</b>			
<b>AT+GTSPD=gv200,1,80,120,60,300,1,1,0,0,,,,,,,,,,,,,000C\$</b>			
<b>AT+GTSPD=gv200,2,80,120,60,300,1,1,0,0,,,,,,,,,,,,,000C\$</b>			
Parameter	Length(byte)	Range/Format	Default
Password	4 – 6	'0' – '9' 'a' – 'z' 'A' – 'Z'	gv200
Mode	1	0 1 2 3	0
Min Speed	<=3	0 – 400km/h	0
Max Speed	<=3	0 – 400km/h	0
Validity	<=4	15 – 3600sec	60
Send Interval	<=4	30 – 3600sec	300
Output ID	1	0 – 4	0
Output Status	1	0 1	
Duration	<=3	0 – 255(×100ms)	0
Toggle Times	<=3	0 – 255	0
Reserved	0		
Reserved	0		
Reserved	0		
Reserved	0		
Reserved	0		
Reserved	0		
Reserved	0		
Reserved	0		
Reserved	0		
Reserved	0		
Reserved	0		
Reserved	0		
Serial Number	4	0000 – FFFF	

Tail Character	1	\$	\$
----------------	---	----	----

- ✧ *<Mode>*: The working mode of the speed alarm.
  - 0: Disable speed alarm.
  - 1: Report speed alarm if the current speed is within the speed range defined by *<Min Speed>* and *<Max Speed>*.
  - 2: Report speed alarm if the current speed is outside the speed range defined by *<Min Speed>* and *<Max Speed>*.
  - 3: Report speed alarm only one time if the current speed is within or outside the speed range defined by *<Min Speed>* and *<Max Speed>*. In this mode, *<Send Interval>* will be ignored.
- ✧ *<Min Speed>*: The lower limit speed.
- ✧ *<Max Speed>*: The upper limit speed.
- ✧ *<Duration>*: If the speed meets the alarm condition and maintains a period of time defined by *<Duration>*, the speed alarm will be triggered.
- ✧ *<Send Interval>*: The interval time of sending speed alarm message.

The acknowledgment message of AT+GTSPD command:

➤ +ACK:GTSPD,

<b>Example:</b>			
<b>+ACK:GTSPD,040100,135790246811220,,000C,20090214093254,11F0\$</b>			
Parameter	Length(byte)	Range/Format	Default
Protocol Version	6	XX0000 – XXXFFF, X ∈ {‘A’ – ‘Z’, ‘0’ – ‘9’}	
Unique ID	15	IMEI	
Device Name	<=10	'0' – '9' 'a' – 'z' 'A' – 'Z' '-' '_'	
Serial Number	4	0000 – FFFF	
Send Time	14	YYYYMMDDHHMMSS	
Count Number	4	0000 – FFFF	
Tail Character	1	\$	\$

### 3.2.14. SOS Function

This command is used to configure the specified input port for emergency. When an emergency occurs, the end user can use this input port to trigger the emergency call and report position message **+RESP:GTSOS** to the backend server. A specified wave shape can be configured to output on specified output port.

#### ➤ AT+GTSOS=

<b>Example:</b>			
<b>AT+GTSOS=gv200,1,4,+8613812341234,1,1,0,0,,,,,000D\$</b>			
Parameter	Length(byte)	Range/Format	Default
Password	4 – 6	'0' – '9' 'a' – 'z' 'A' – 'Z'	gv200
Mode	1	0 – 4	0
Digital Input ID	1	0 2 – 4	0
SOS Number	<=20		
Output ID	1	0 – 4	
Output Status	1	0 1	
Duration	<=3	0 – 255(×100ms)	0
Toggle Times	<=3	0 – 255	0
SOS Microphone	2	0 – 10	5
SOS Speaker	1	0 – 7	4
Reserved	0		
Reserved	0		
Serial Number	4	0000 – FFFF	
Tail Character	1	\$	\$

- ✧ *<Mode>*: The working mode of SOS function.
  - 0: Disable SOS function.
  - 1: SOS call only.
  - 2: Send the current position to the backend server only.
  - 3: Send the current position to the backend server first and then make SOS call.
  - 4: Send the current position to the backend server via SMS and make SOS call.
- ✧ *<Digital Input ID>*: ID of the digital input port which triggers the SOS function. 0 means the SOS function is disabled. The corresponding digital input port should be configured by the command **AT+GTDIS** first. If configured to trigger the SOS function, there is no **+RESP:GTDIS** report message for the specified digital input port.
- ✧ *<SOS number>*: the emergency phone number.

- ✧ <SOS Microphone>: Set the volume of the microphone, 0 means disable microphone.
- ✧ <SOS Speaker>: Set the volume of the speaker, 0 means disable speaker.

The acknowledgment message of AT+GTSOS command:

➤ +ACK:GTSOS,

<b>Example:</b>			
<b>+ACK:GTSOS,040100,135790246811220,,000D,20090214093254,11F0\$</b>			
<b>Parameter</b>	<b>Length(byte)</b>	<b>Range/Format</b>	<b>Default</b>
Protocol Version	6	XX0000 – XXXFFF, X ∈ {‘A’ – ‘Z’, ‘0’ – ‘9’}	
Unique ID	15	IMEI	
Device Name	<=10	'0' – '9' 'a' – 'z' 'A' – 'Z' '-' '_'	
Serial Number	4	0000 – FFFF	
Send Time	14	YYYYMMDDHHMMSS	
Count Number	4	0000 – FFFF	
Tail Character	1	\$	\$

### 3.2.15. Voice Monitoring

The command **AT+GTMON** is used to set stealthy voice monitoring. After the command is executed, the device will send the message **+RESP:GTMON** to the backend server via SMS.

➤ **AT+GTMON=**

<b>Example:</b> <b>AT+GTMON=gv200,1,+8613812341234,5,0,,,,,000E\$</b>			
<b>Parameter</b>	<b>Length(byte)</b>	<b>Range/Format</b>	<b>Default</b>
Password	4 – 6	'0' – '9' 'a' – 'z' 'A' – 'Z'	gv200
Mode	1	0–3	0
Stealthy Phone Number	<=20		
Stealthy Microphone	2	0 – 10	5
Stealthy Speaker	1	0 – 7	0
Reserved	0		
Reserved	0		
Reserved	0		
Reserved	0		
Serial Number	4	0000 – FFFF	
Tail Character	1	\$	\$

- ✧ *<Mode>*: Stealthy voice monitoring mode.
  - 0: Disable stealthy voice monitoring.
  - 1: Open stealthy voice monitoring when calling phone number specified in *<Stealthy Phone Number>*.
  - 2: Open stealthy voice monitoring automatically when a call is incoming.
  - 3: Open stealthy voice monitoring when calling phone number specified in *<Stealthy Phone Number>* and when a call is incoming.
- ✧ *<Stealthy Phone Number>*: The phone number to make stealthy voice call.
- ✧ *<Stealthy Microphone>*: Set the volume of the microphone, 0 means disable microphone.
- ✧ *<Stealthy Speaker>*: Set the volume of the speaker, 0 means disable speaker.

The acknowledgment message of **AT+GTMON** command:

➤ **+ACK:GTMON,**

<b>Example:</b>
<b>+ACK:GTMON,040100,135790246811220,,000E,20090214093254,11F0\$</b>

Parameter	Length(byte)	Range/Format	Default
Protocol Version	6	XX0000 – XXXFFF, X ∈ {‘A’ – ‘Z’, ‘0’ – ‘9’}	
Unique ID	15	IMEI	
Device Name	<=10	'0' – '9' 'a' – 'z' 'A' – 'Z' '-' ' ' '_'	
Serial Number	4	0000 – FFFF	
Send Time	14	YYYYMMDDHHMMSS	
Count Number	4	0000 – FFFF	
Tail Character	1	\$	\$

### 3.2.16. Real Time Operation

The command **AT+GTRTO** is used to retrieve information from the terminal or control the terminal to execute certain actions.

#### ➤ AT+GTRTO=

Example: AT+GTRTO=gv200,A,,,,,000F\$			
Parameter	Length(byte)	Range/Format	Default
Password	4 – 6	'0' – '9' 'a' – 'z' 'A' – 'Z'	gv200
Sub Command	1	0 – C	
Reserved	0		
Reserved	0		
Reserved	0		
Reserved	0		
Reserved	0		
Serial Number	4	0000 – FFFF	
Tail Character	1	\$	\$

✧ <Sub Command>: Valid value is 0–9, A, B, C.

- 0: **GPS**. Get the GPS related information via message **+RESP:GTGPS**.
- 1: **RTL**. Request the terminal to report its current position immediately via message **+RESP:GTRTL**.
- 2: **READ**. Get the current configuration of the terminal via message **+RESP:GTALL**.
- 3: **REBOOT**. Reboot the terminal.
- 4: **RESET**. Reset all parameters to factory setting. Parameters configured by **AT+GTBSI** and **AT+GTSRI** will not be reset.
- 5: **PWROFF**. Power off the device.
- 6: **CID**. Get the ICCID of the SIM card which is being used by the terminal via message **+RESP:GTCID**.
- 7: **CSQ**. Get the current GSM signal level of the terminal via message **+RESP:GTCSQ**.
- 8: **VER**. Get the version information of the device via message **+RESP:GTVER**.
- 9: **BAT**. Get the battery level and adapter status of the terminal via message **+RESP:GTBAT**.
- A: **IOS**. Get status of all the IO ports via message **+RESP:GTIOS**.
- B: **TMZ**. Get the time zone settings via message **+RESP:GTTMZ**.
- C: **GIR**. Get cell information via message **+RESP:GTGSM**.

The acknowledgment message of **AT+GTRTO** command:

➤ **+ACK:GTRTO,**

<b>Example:</b>			
<b>+ACK:GTRTO,040100,135790246811220,,IOS,000F,20090214093254,11F1\$</b>			
<b>Parameter</b>	<b>Length(byte)</b>	<b>Range/Format</b>	<b>Default</b>
Protocol Version	6	XX0000 – XXFFFF, X ∈ {'A' – 'Z', '0' – '9'}	
Unique ID	15	IMEI	
Device Name	<=10	'0' – '9' 'a' – 'z' 'A' – 'Z' '-' '_'	
Sub Command	<=6	Sub command string	
Serial Number	4	0000 – FFFF	
Send Time	14	YYYYMMDDHHMMSS	
Count Number	4	0000 – FFFF	
Tail Character	1	\$	\$

✧ *<Sub Command>*: A string to indicate the sub command of **AT+GTRTO**.



### 3.2.17. Auto-unlock PIN

The command **AT+GTPIN** is used to configure the auto-unlock PIN function of the device. Some operators offer SIM card with PIN code protection by default. To make the device work with the PIN-protected SIM card, use this command to let the device auto-unlock the SIM PIN with the pre-set PIN code.

#### ➤ AT+GTPIN=

<b>Example:</b> AT+GTPIN=gv200,1,0000,0,,,,,0010\$			
Parameter	Length(byte)	Range/Format	Default
Password	4 – 6	'0' – '9' 'a' – 'z' 'A' – 'Z'	gv200
Enable Auto-unlock PIN	1	0 1	1
PIN	4 – 8	'0' – '9'	
Reserved	0		
Reserved	0		
Reserved	0		
Reserved	0		
Reserved	0		
Serial Number	4	0000 – FFFF	
Tail Character	1	\$	\$

- ✧ <Enable Auto-unlock PIN>: 1 to enable the auto-unlock PIN function, 0 to disable.
- ✧ <PIN>: Code used to unlock the SIM PIN.

The acknowledgment message of **AT+GTPIN** command:

#### ➤ +ACK:GTPIN,

<b>Example:</b> +ACK:GTPIN,040100,135790246811220,,0010,20090214093254,11F0\$			
Parameter	Length(byte)	Range/Format	Default
Protocol Version	6	XX0000 – XXFFFF, X ∈ {'A' – 'Z', '0' – '9'}	
Unique ID	15	IMEI	
Device Name	<=10	'0' – '9' 'a' – 'z' 'A' – 'Z' '-' '_'	
Serial Number	4	0000 – FFFF	

Send Time	14	YYYYMMDDHHMMSS	
Count Number	4	0000 – FFFF	
Tail Character	1	\$	\$

Queclink  
Confidential

### 3.2.18. Second Serial Port Setting

The second serial port of the device is used to connect with external devices to extend the application of the device. This command **AT+GTURT** is used to configure the working mode of the serial port for different external devices and the parameters for the serial port communication.

➤ **AT+GTURT=**

<b>Example:</b>			
<b>AT+GTURT=gv200,1,5,8,1,0,0,0,,0018\$</b>			
<b>Parameter</b>	<b>Length(byte)</b>	<b>Range/Format</b>	<b>Default</b>
Password	4 – 6	'0' – '9' 'a' – 'z' 'A' – 'Z'	gv200
Working Mode	1	0 1 2 3	0
Baudrate Index	<=2	1 – 12	12
Data Bits	1	7 – 8	8
Stop Bits	1	1 – 3	1
Parity Bits	1	0 – 4	0
Sleep Enable	1	0 1	0
Input ID of Wakeup	0	0 2	0
Reserved	0		
Reserved	0		
Serial Number	4	0000 – FFFF	
Tail Character	1	\$	\$

✧ *<Working Mode>*: Configure the working mode of UART2.

- 0: Disable UART2.
- 1: Use UART2 to transfer data via **AT+GTDAT**.
- 2: Reserve
- 3: Use specific RFID card reader to communicate with UART2 of GV200. The GV200 will report the card ID received from the card reader to the backend server with message **+RESP:GTDAT** in long format. Set the Baudrate as 9600, and set **AT+GTDIS** command to enable input port 2.

✧ *<Baudrate Index>*: The index of the supported baudrate of the second serial port. All supported baudrates are listed below.

<b>Baudrate Index</b>	<b>Baudrate</b>
1	1200
2	2400
3	4800
4	7200

5	9600
6	14400
7	19200
8	28800
9	33900
10	38400
11	57600
12	115200

- ✧ <Data Bits>: Data Bits of the UART2 and its' value may be 7 and 8.
- ✧ <Stop Bits>: Stop Bits of the UART2 and its' value may be 0, 1 and 2.
  - 1: 1 Stop Bits.
  - 2: 2 Stop Bits.
  - 3: 1.5 Stop Bits.
- ✧ <Parity Bits>: Parity Bits of the UART2 and its' value may be 0, 1, 2, 3, and 4.
  - 0: None Parity.
  - 1: Odd Parity.
  - 2: Even Parity.
  - 3: Space Parity.
  - 4: Mark Parity.
- ✧ <Sleep Enable>: The device support low power mode to reduce the power consumption. When the device enters into low power mode, the response to the serial port will be very slow unless being waked up. This parameter is used to enable or disable the lower power mode of the device.
  - 0: disable the low power mode
  - 1: enable the lower power mode.

If the lower power mode is enabled, the external device must have the ability to wakeup the device from the low power mode by the digital input specified by parameter<Input ID of Wakeup>. Otherwise, the low power mode should be disabled.
- ✧ <Input ID of Wakeup>: The ID of the digital input of GV200 used to wakeup the device from the low power mode for serial port communication
  - 0: Do not use digital input to wakeup the device.
  - 2: Use digital input 2 to wakeup the device. The parameter of the digital input 2 should be set by command **AT+GTDIS**.

The acknowledgment message of **AT+GTURT** command:

➤ **+ACK:GTURT,**

Example:			
<b>+ACK:GTURT,040100,135790246811220,,0018,20090214093254,11F0\$</b>			
Parameter	Length(byte)	Range/Format	Default
Protocol Version	6	XX0000 – XXXFFF, X ∈ {'A' – 'Z','0' – '9'}	

Unique ID	15	IMEI	
Device Name	<=10	'0' – '9' 'a' – 'z' 'A' – 'Z' '-' ' ' '_'	
Serial Number	4	0000 – FFFF	
Send Time	14	YYYYMMDDHHMMSS	
Count Number	4	0000 – FFFF	
Tail Character	1	\$	\$

### 3.2.19. Transparent Data Transmission

The command **AT+GTDAT** is used to transfer data between the backend server and the equipment connected to the second serial port of the device. Data to the backend server is wrapped into message **+RESP:GTDAT** and sent to the backend server while data to the equipment is directly output to the second serial port without the @Tracker protocol stuffing. All data is transparent to the device.

#### ➤ AT+GTDAT=

<b>Example:</b>			
<b>AT+GTDAT=gv200,0,,data to the backend server,,,,0011\$</b>			
<b>AT+GTDAT=gv200,1,,data to the serial port,,,,0011\$</b>			
<b>AT+GTDAT=gv200,2,,data to the backend server,,,,0011\$</b>			
Parameter	Length(byte)	Range/Format	Default
Password	4 – 6	'0' – '9' 'a' – 'z' 'A' – 'Z'	Gv200
Command Type	1	0 1 2	
Reserved	0		
Data	<=100	ASCII Code	
Reserved	0		
Reserved	0		
Reserved	0		
Reserved	0		
Serial Number	4	0000 – FFFF	
Tail Character	1	\$	\$

- ✧ *<Command Type>*: Command type to indicate which way to send the data.
  - 0: means to send message to the backend server with **+RESP:GTDAT (Short Format)**.
  - 1: means to send the pure data directly to the second serial port.
  - 2: means to send message to the backend server with **+RESP:GTDAT (Long Format)**.
- ✧ *Data>*: Data to be transferred between the backend server and the equipment connected to the second serial port of the device.

The acknowledgment message of **AT+GTDAT** command:

#### ➤ +ACK:GTDAT,

<b>Example:</b>
<b>+ACK:GTDAT,040100,135790246811220,,0011,20090214093254,11F0\$</b>

Parameter	Length(byte)	Range/Format	Default
Protocol Version	6	XX0000 – XXXFFF, X ∈ {‘A’ – ‘Z’, ‘0’ – ‘9’}	
Unique ID	15	IMEI	
Device Name	<=10	'0' – '9' 'a' – 'z' 'A' – 'Z' '-' ' ' '_'	
Serial Number	4	0000 – FFFF	
Send Time	14	YYYYMMDDHHMMSS	
Count Number	4	0000 – FFFF	
Tail Character	1	\$	\$

### 3.2.20. Outside Working Hours

To protect the privacy of the driver when they are off duty, the device could be configured to report empty location information during the outside working hours. The command **AT+GTOWH** is used to define the working hours and the working mode to protect the privacy. When this function is enabled, the device will report empty latitude, empty longitude, empty LAC and empty Cell ID in all the report messages except for **+RESP:GTSOS**. For **AT+GTMON**, it only reports the **+RESP:GTMON** message to the backend server (with empty location information) and does not make the monitoring phone call.

#### ➤ AT+GTOWH=

<b>Example:</b>			
<b>AT+GTOWH=gv200,1,1F,0900,1200,1300,1730,,,4,1,1,0,,,,,0012\$</b>			
<b>Parameter</b>	<b>Length(byte)</b>	<b>Range/Format</b>	<b>Default</b>
Password	4 – 6	'0' – '9' 'a' – 'z' 'A' – 'Z'	gv200
Mode	1	0 1 2 3	0
Day of Work	<=2	0 – 7F	1F
Working Hours Start1	4	HHMM	0900
Working Hours End1	4	HHMM	1200
Working Hours Start2	4	HHMM	1300
Working Hours End2	4	HHMM	1800
Reserved	0		
Reserved	0		
Digital Input ID	1	0 4	0
Output ID	1	0 – 4	0
Output Status	1	0 1	
Duration	<=3	0 – 255(×100ms)	0
Toggle Times	<=3	0 – 255	0
Reserved	0		
Reserved	0		
Reserved	0		
Reserved	0		
Serial Number	4	0000 – FFFF	
Tail Character	1	\$	\$



- ✧ *<Mode>*: Working mode.
  - 0: Disable this function.
  - 1: Manual mode. By using the equipment connected to the specified digital input, the driver manually enable the time checking. If the device finds it is outside the working hours, it will hide the location information in the report messages. Otherwise report normally.
  - 2: Full manual mode. By using the equipment connected to the specified digital input, the driver has full control to the privacy protection. The device will not check the time against the working hours arrange. It just hides the location information when the input is enabled and reports normally when the input is disabled.
  - 3: Automatic mode. Under this mode, the device will ignore the status of the digital input. It will automatically check the current time against the working hours arrange. If outside the working hours, hide the location information. Otherwise report normally.
- ✧ *<Day of Work>*: Specify the working days in a week in a bitwise manner.
  - Bit 0 for Monday
  - Bit 1 for Tuesday
  - Bit 2 for Wednesday
  - Bit 3 for Thursday
  - Bit 4 for Friday
  - Bit 5 for Saturday
  - Bit 6 for Sunday

For each bit, 0 means off day, 1 means working day.
- ✧ *<Working Hours Start1>*, *<Working Hours End1>*: The first period of the working hours in a day.
- ✧ *<Working Hours Start2>*, *<Working Hours End2>*: The second period of the working hours in a day.
- ✧ *<Digital Input ID>*: The input ID used to trigger this function when mode is 1 or 2. Only digital input port 4 is supported. The working parameter of the specified input must be set by **AT+GTDIS** first.
- ✧ *<Output ID>*, *<Output Status>*, *<Duration>* and *<Toggle Times>*: When this function is enabled and current is off duty time, the specified wave will be output to the specified output.

The acknowledgment message of **AT+GTOWH** command:

➤ **+ACK:GTOWH,**

<b>Example:</b>			
<b>+ACK:GTOWH,040100,135790246811220,,0012,20090214093254,11F0\$</b>			
<b>Parameter</b>	<b>Length(byte)</b>	<b>Range/Format</b>	<b>Default</b>
Protocol Version	6	XX0000 – XXXFFF, X ∈ {‘A’ – ‘Z’, ‘0’ – ‘9’}	
Unique ID	15	IMEI	

Device Name	<=10	'0' – '9' 'a' – 'z' 'A' – 'Z' ' ' ' ' _	
Serial Number	4	0000 – FFFF	
Send Time	14	YYYYMMDDHHMMSS	
Count Number	4	0000 – FFFF	
Tail Character	1	\$	\$

Queclink  
Confidential

### 3.2.21. Protocol Watchdog

The **AT+GTDG** command is used to reboot the device in a time based manner or upon ignition. This helps the device avoid working in an exceptional status for a long time. Besides these two automatically reboot method, the device also supports to use the digital input to trigger the reboot manually.

#### ➤ AT+GTDG=

<b>Example:</b>			
AT+GTDG=gv200,1,,1,0130,,1,2,,,,,0013\$			
AT+GTDG=gv200,2,30,,,,,1,3,,,,,0013\$			
Parameter	Length(byte)	Range/Format	Default
Password	4 – 6	'0' – '9' 'a' – 'z' 'A' – 'Z'	gv200
Mode	1	0 1 2	0
Ignition Frequency	<=3	10 – 120 min	60
Interval	<=2	1 – 30 day	30
Time	4	HHMM	0200
Reserved	0		
Report Before Reboot	1	0 1	1
Input ID	1	0 2 3	0
Reserved	0		
Reserved	0		
Reserved	0		
Reserved	0		
Serial Number	4	0000 – FFFF	
Tail Character	1	\$	\$

- ✧ <Mode>: Working mode.
  - 0: Disable this function
  - 1: Reboot periodically according to the <Interval> and <Time> setting.
  - 2: Reboot when ignition on.
- ✧ <Ignition Frequency>: When the working mode is 2, if the time interval between two adjacent ignitions is greater than the specified value, the device will automatically reboot upon ignition on.
- ✧ <Interval>: The interval to reboot the device in day.
- ✧ <Time>: At what time to perform the reboot operation when <Interval> is met.
- ✧ <Report Before Reboot>: Whether to report the +RESP:GTDG message before reboot. 0

means no report, 1 to report. If this is enabled, the device will make a real-time location before sending the message in order to send it with the current location information.

- ✧ <Input ID>: ID of the digital input port which is used to trigger the manually reboot. 0 means do not use manual reboot. Only digital input port 2 and 3 are supported.

The acknowledgment message of AT+GTDOG command:

➤ +ACK:GTDOG,

<b>Example:</b>			
<b>+ACK:GTDOG,040100,135790246811220,,0013,20090214093254,11F0\$</b>			
<b>Parameter</b>	<b>Length(byte)</b>	<b>Range/Format</b>	<b>Default</b>
Protocol Version	6	XX0000 – XXXFFF, X ∈ {'A' – 'Z', '0' – '9'}	
Unique ID	15	IMEI	
Device Name	<=10	'0' – '9' 'a' – 'z' 'A' – 'Z' '!' ' ' '_'	
Serial Number	4	0000 – FFFF	
Send Time	14	YYYYMMDDHHMMSS	
Count Number	4	0000 – FFFF	
Tail Character	1	\$	\$

### 3.2.2.2. Multi Analog Input Port Setting

The command **AT+GTMAI** is used to configure the parameters of multi analog input ports.

➤ **AT+GTMAI=**

<b>Example:</b> <b>AT+GTMAI=gv200,1,2,250,2700,2,,1,1,0,0,1,2,2,250,2700,2,,1,1,0,0,1,3,2,250,2700,2,,1,1,0,0,1,,,,,0014\$</b>			
<b>Parameter</b>	<b>Length(byte)</b>	<b>Range/Format</b>	<b>Default</b>
Password	4~6	'0'~'9' 'a'~'z' 'A'~'Z'	gv200
Analog Input ID1	1	1	1
Mode	1	0 1 2	0
Min Threshold	<=4	250~2700mV	
Max Threshold	<=4	250~2700mV	
Sample Rate	<=2	0 1~12(×2s)	0
Reserved	0,TBD		
Output ID	1	0~4	
Output Active	1	0 1	
Duration	<=3	0~255(×100ms)	0
Toggle Times	<=3	0~255	0
Sync with FRI	1	0 1	0
Analog Input ID2	1	2	2
Mode	1	0 1 2	0
Min Threshold	<=4	250~2700mV	
Max Threshold	<=4	250~2700mV	
Sample Rate	<=2	0 1~12(×2s)	0
Reserved	0,TBD		
Output ID	1	0~4	
Output Active	1	0 1	
Duration	<=3	0~255(×100ms)	0
Toggle Times	<=3	0~255	0
Sync with FRI	1	0 1	0

Analog Input ID3	1	3	3
Mode	1	0 1 2	0
Min Threshold	<=4	250~2700mV	
Max Threshold	<=4	250~2700mV	
Sample Rate	<=2	0 1~12(×2s)	0
Reserved	0,TBD		
Output ID	1	0~4	
Output Active	1	0 1	
Duration	<=3	0~255(×100ms)	0
Toggle Times	<=3	0~255	0
Sync with FRI	1	0 1	0
Reserved	0,TBD		
Reserved	0		
Reserved	0		
Serial Number	4	0000~FFFF	
Tail Character	1	\$	\$

- ✧ < Analog Input ID 1~3>: The analog input port ID.
- ✧ <Mode>: Working mode of the analog input alarm (+RESP :GTMAI).
  - 0: Disable analog input alarm.
  - 1: Enable analog input alarm. If the current input voltage is within the range of (<Min Threshold>, <Max Threshold>), the alarm will be triggered.
  - 2: Enable analog input alarm. If the current input voltage is outside the range of (<Min Threshold>, <Max Threshold>), the alarm will be triggered.
- ✧ <Min Threshold>: The lower limit to the voltage of the analog input port to trigger the alarm.
- ✧ <Max Threshold>: The upper limit to the voltage of the analog input port to trigger the alarm.
- ✧ <Sample Rate>: The sampling period of the analog input port.
- ✧ <Output ID>: Specify the ID of the output port (1 to 4) to output specified wave shape when the analog input alarm is triggered. If set to 0, no output wave.
- ✧ <Output Active>: set the final status of the output port.
  - 0: Disable status.
  - 1: Enable status.
- ✧ <Toggle Times>: The times of the square-wave.
- ✧ <Sync with FRI>: The device can send the analog input voltage periodically along with fixed report message. Set this field to 1 to enable it, 0 to disable.

The acknowledgment message of AT+GTMAI command:

➤ **+ACK:GTMAI,**

<b>Example:</b>			
<b>+ACK:GTMAI,040100,135790246811220,,0014,20090214093254,11F0\$</b>			
<b>Parameter</b>	<b>Length(byte)</b>	<b>Range/Format</b>	<b>Default</b>
Protocol Version	6	XX0000 – XXXFFF, X ∈ {'A' – 'Z','0' – '9'}	
Unique ID	15	IMEI	
Device Name	<=10	'0' – '9' 'a' – 'z' 'A' – 'Z' ' ' ' ' ' _'	
Serial Number	4	0000 – FFFF	
Send Time	14	YYYYMMDDHHMMSS	
Count Number	4	0000 – FFFF	
Tail Character	1	\$	\$

### 3.2.23. Excessive Idling Detection

The command **AT+GTIDL** is used to detect the engine excessive idling (stationary while ignition on). To use this command, the ignition signal must be connected to the device. When the device detects that the vehicle is entering into the idle status, it will report event message **+RESP:GTIDN** to the backend server. When the vehicle leaves the idle status, the device will report event message **+RESP:GTIDF** to the backend server.

#### ➤ AT+GTIDL=

Example: AT+GTIDL=gv200,1,2,1,,,,,1,1,0,0,,,,,0015\$			
Parameter	Length(byte)	Range/Format	Default
Password	4 – 6	'0' – '9' 'a' – 'z' 'A' – 'Z'	gv200
Mode	1	0 1	0
Time to Stationary	2	1 – 30min	2
Time to Movement	1	1 – 5 min	1
Reserved	0		
Reserved	0		
Reserved	0		
Reserved	0		
Output ID	1	0 – 4	0
Output Status	1	0 1	0
Duration	<=3	0 – 255(×100ms)	0
Toggle Times	<=3	0 – 255	0
Reserved	0		
Reserved	0		
Reserved	0		
Reserved	0		
Serial Number	4	0000 – FFFF	
Tail Character	1	\$	\$

✧ <Mode>: Working mode.

- 0: Disable this function
- 1: Enable this function.

✧ <Time to Stationary>: If the vehicle is detected to be stationary with ignition on for this time





### 3.2.24. Hour Meter Counter

The command **AT+GTHMC** is used to measure time of use with each actuation of the ignition on. To use this command, the ignition signal must be connected to the device. When the device sends **+RESP:GTFRI** and **+RESP:GTIGN** and **+RESP:GTIGF**, *<hour meter counter>* will be sent in these reports.

➤ **AT+GTHMC=**

<b>Example:</b> <b>AT+GTHMC=gv200,1,12345:12:34,,,,,,,,,0016\$</b>			
<b>Parameter</b>	<b>Length(byte)</b>	<b>Range/Format</b>	<b>Default</b>
Password	4 – 6	'0' – '9' 'a' – 'z' 'A' – 'Z'	gv200
Hour Meter Enable	1	0 1	0
Initial Hour Meter Count	11	00000:00:00-99999:00:00	00000:00:00
Reserved	0		
Reserved	0		
Reserved	0		
Reserved	0		
Reserved	0		
Reserved	0		
Reserved	0		
Reserved	0		
Serial Number	4	0000 – FFFF	
Tail Character	1	\$	\$

- ✧ *<Hour Meter Enable>*: Enable or disable hour meter counter function. If hour meter counter function is enabled, hour meter count will be increased when the device is in ignition.
  - 0: Disable hour meter counter function
  - 1: Enable hour meter counter function
- ✧ *<Initial Hour Meter Count>*: Initial hours meter count. It is formatted with 5 hour digits and 2 minute digits and 2 second digits and ranges from 00000:00:00– 99999:00:00. When engine is on at the first time, *<Hour Meter Count>* which report in **+RESP:GTFRI** /**+RESP:GTIGN**/**+RESP:GTIGF** will be increased based on this value.

The acknowledgment message of **AT+GTHMC** command:

➤ **+ACK:GTHMC,**

<b>Example:</b> +ACK:GTHMC,040100,135790246811220,,0016,20090214093254,11F0\$			
<b>Parameter</b>	<b>Length(byte)</b>	<b>Range/Format</b>	<b>Default</b>
Protocol Version	6	XX0000 – XXXFFF, X ∈ {'A' – 'Z','0' – '9'}	
Unique ID	15	IMEI	
Device Name	<=10	'0' – '9' 'a' – 'z' 'A' – 'Z' ' ' ' ' ' _'	
Serial Number	4	0000 – FFFF	
Send Time	14	YYYYMMDDHHMMSS	
Count Number	4	0000 – FFFF	
Tail Character	1	\$	\$

### 3.2.25. Harsh Behavior Monitoring

The command **AT+GTHBM** is used to monitor the harsh behavior of drive with GPS. Two harsh behaviors are monitored, the harsh braking and the harsh acceleration. According the speed read from GPS, 3 levels of speed are defined including high speed, medium speed and low speed. For each speed level, 2 thresholds of speed change are defined to determine the harsh braking and harsh acceleration. If the change of speed within 5 seconds are greater than the corresponding threshold, the device will report **+RESP:GTHBM** message to the backend server to indicate the harsh behavior. The same harsh behavior within 30 seconds only reports once. For this function to work, the *<GPS on Need>* in **AT+GTCFG** must set to 0.

#### ➤ AT+GTHBM=

<b>Example:</b>			
<b>AT+GTHBM=gv200,1,,,100,21,6,,60,21,6,,,21,15,,1,1,8,3,,,,,0017\$</b>			
<b>Parameter</b>	<b>Length(byte)</b>	<b>Range/Format</b>	<b>Default</b>
Password	4 – 6	'0' – '9' 'a' – 'z' 'A' – 'Z'	gv200
Enable	1	0 1	0
Reserved	0		
Reserved	0		
High Speed	<=3	100 – 400km/h	100
ΔVhb	<=3	0 – 100km/h	0
ΔVha	<=3	0 – 100km/h	0
Reserved	0		
Medium Speed	<=3	60 – 100km/h	60
ΔVmb	<=3	0 – 100km/h	0
ΔVma	<=3	0 – 100/km/h	0
Reserved	0		
Reserved	0		
ΔVlb	<=3	0 – 100/km/h	0
ΔVla	<=3	0 – 100/km/h	0
Reserved	0		
Output ID	1	0 – 4	0
Output Status	1	0 1	0
Duration	<=3	0 – 255(×100ms)	0

Toggle Times	<=3	0 – 255	0
Reserved	0		
Reserved	0		
Reserved	0		
Reserved	0		
Serial Number	4	0000 – FFFF	
Tail Character	1	\$	\$

- ✧ <Enable>: Enable or disable this function.
  - 0: Disable this function
  - 1: Enable this function
- ✧ <High Speed>, <Medium Speed>: If the last known speed of the device read from GPS is greater or equal to <High Speed>, the vehicle that the device is attached to is considered to be high speed. If the last known speed is less than <High Speed> while greater or equal to <Medium Speed>, the vehicle is considered to be medium speed. If the last known speed is less than <Medium Speed>, the vehicle is considered to be low speed.
- ✧ <ΔVhb>: The threshold for harsh braking in high speed level. If within 5 seconds, the current speed is less than the last known speed and the change of the speed is greater than or equal to this value, a harsh braking is detected in high speed level. If set to 0, do not monitor harsh braking behavior in high speed level.
- ✧ <ΔVha>: The threshold for harsh acceleration in high speed level. If within 5 seconds, the current speed is greater than the last known speed and the change of the speed is greater than or equal to this value, a harsh acceleration is detected in high speed level. If set to 0, do not monitor harsh acceleration behavior in high speed level.
- ✧ <ΔVmb>: The threshold for harsh braking in medium speed level. If within 5 seconds, the current speed is less than the last known speed and the change of the speed is greater than or equal to this value, a harsh braking is detected in medium speed level. If set to 0, do not monitor harsh braking behavior in medium speed level.
- ✧ <ΔVma>: The threshold for harsh acceleration in medium speed level. If within 5 seconds, the current speed is greater than the last known speed and the change of the speed is greater than or equal to this value, a harsh acceleration is detected in medium speed level. If set to 0, do not monitor harsh acceleration behavior in medium speed level.
- ✧ <ΔVlb>: The threshold for harsh braking in low speed level. If within 5 seconds, the current speed is less than the last known speed and the change of the speed is greater than or equal to this value, a harsh braking is detected in low speed level. If set to 0, do not monitor harsh braking behavior in low speed level.
- ✧ <ΔVla>: The threshold for harsh acceleration in low speed level. If within 5 seconds, the current speed is greater than the last known speed and the change of the speed is greater than or equal to this value, a harsh acceleration is detected in low speed level. If set to 0, do not monitor harsh acceleration behavior in low speed level.
- ✧ <Output ID>: Specify the ID of the output port (1 to 4) to output specified wave shape when

the harsh behavior is detected. If set to 0, no output wave.

The acknowledgment message of **AT+GTHBM** command:

➤ **+ACK:GTHBM,**

<b>Example:</b>			
<b>+ACK:GTHBM,040100,135790246811220,,0017,20090214093254,11F0\$</b>			
<b>Parameter</b>	<b>Length(byte)</b>	<b>Range/Format</b>	<b>Default</b>
Protocol Version	6	XX0000 – XXFFFF, X ∈ {'A' – 'Z','0' – '9'}	
Unique ID	15	IMEI	
Device Name	<=10	'0' – '9' 'a' – 'z' 'A' – 'Z' '-' '_'	
Serial Number	4	0000 – FFFF	
Send Time	14	YYYYMMDDHHMMSS	
Count Number	4	0000 – FFFF	
Tail Character	1	\$	\$

### 3.2.26. White List

The command **AT+GTWLT** is used to configure a list of authorized phone numbers which are allowed to perform the location by call or voice monitoring functions.

➤ **AT+GTWLT=**

<b>Example:</b> <b>AT+GTWLT=gv200,3,1,2,13813888888,13913999999,,,,,0018\$</b>			
<b>Parameter</b>	<b>Length(byte)</b>	<b>Range/Format</b>	<b>Default</b>
Password	4 – 6	'0' – '9' 'a' – 'z' 'A' – 'Z'	gv200
Call Filter	1	0 1 2 3	0
Start Index	<=2	1 – 10	
End Index	<=2	1 – 10	
Phone Number List	<=20*10		
Reserved	0		
Reserved	0		
Reserved	0		
Reserved	0		
Serial Number	4	0000 – FFFF	
Tail Character	1	\$	\$

✧ *<Call Filter>*: The working mode of this function.

- 0: Disable this function. Allow any phone number to use the location by call and voice monitoring functions.
- 1: White list for location by call. Only phone numbers saved in the white list could use the location by call function. Do not check phone number for voice monitoring function.
- 2: White list for voice monitoring. Only phone numbers saved in the white list could use the voice monitoring function. Do not check phone number for location by call function.
- 3: White list for both location by call and voice monitoring functions. Only phone numbers saved in the white list could use these two functions.

✧ *<Start Index>*, *<End Index>*: The index range of the white list to which the phone numbers are to be updated. For example, the *<Start Index>* is set to 1 and the *<End Index>* is set to 2. Then the first two phone numbers in the white list will be updated by the numbers provided in the parameter *<Phone Number List>*. The *<Start Index>* and *<End Index>* defines the total amount of phone numbers that will be updated. If either one is empty, there should be no *<Phone Number List>* parameter followed.

- ✧ <Phone Number List>: A list of phone numbers, which are separated by comma, to be updated to the white list. The amount of the phone numbers are defined by <Start Index> and <End Index>.

The acknowledgment message of AT+GTWLT command:

➤ +ACK:GTWLT,

<b>Example:</b>			
<b>+ACK:GTWLT,040100,135790246811220,,0018,20090214093254,11F0\$</b>			
<b>Parameter</b>	<b>Length(byte)</b>	<b>Range/Format</b>	<b>Default</b>
Protocol Version	6	XX0000 – XXXFFF, X ∈ {'A' – 'Z','0' – '9'}	
Unique ID	15	IMEI	
Device Name	<=10	'0' – '9' 'a' – 'z' 'A' – 'Z' '-' '_'	
Serial Number	4	0000 – FFFF	
Send Time	14	YYYYMMDDHHMMSS	
Count Number	4	0000 – FFFF	
Tail Character	1	\$	\$



### 3.2.27. Button Call Setting

The command **AT+GTBCS** is used to pre-set phone numbers to digital input 2, 3 and 4. When the logic status of these inputs change to enable, the device will automatically call the pre-set phone numbers. The volume of the microphone and speaker is configurable.

If this function is enabled, the device will only report **+RESP:GTDIS** message when logic status changes to enable status. Whether to send this report message is configurable.

#### ➤ AT+GTBCS=

<b>Example:</b>			
<b>AT+GTBCS=gv200,2,13813888888,0,3,13913999999,0,0,,,5,4,1,1,1,8,3,,,,,0019\$</b>			
<b>Parameter</b>	<b>Length(byte)</b>	<b>Range/Format</b>	<b>Default</b>
Password	4 – 6	'0' – '9' 'a' – 'z' 'A' – 'Z'	gv200
Input ID2	1	0 2	2
Phone Number	<=20		
Hang-up Call	1	0 1	0
Input ID3	1	0 3	3
Phone Number	<=20		
Hang-up Call	1	0 1	0
Input ID4	1	0 4	4
Phone Number	<=20		
Hang-up Call	1	0 1	0
Microphone	2	0 – 10	5
Speaker	1	0 – 7	4
Send Position	1	0 1	1
Output ID	1	0 – 4	
Output Status	1	0 1	
Duration	<=3	0 – 255(×100ms)	
Toggle Times	<=3	0 – 255	
Reserved	0		
Reserved	0		
Reserved	0		

Reserved	0		
Serial Number	4	0000 – FFFF	
Tail Character	1	\$	\$

- ✧ *<Input ID2>*, *<Input ID3>*, *<Input ID4>*: ID of the digital inputs. If set 0, the pre-set phone number won't be updated by *<Phone Number>*.
- ✧ *<Phone Number>*: The phone number to be set for the corresponding digital input.
- ✧ *<Hang-up Call>*: Whether to hang-up an active call which is not a stealthy voice call if the logical status of relative digital input changes to enable.
- ✧ *<Microphone>*: The volume of the microphone when voice call is established.
- ✧ *<Speaker>*: The volume of the speaker when voice call is established.
- ✧ *<Send Position>*: Whether to send the current position when the corresponding digital input is triggered. 1 to send, 0 not to send.
- ✧ *<Output ID>*: When the corresponding digital input is triggered, the device will output specified wave on the digital output of this ID. Please refer to 3.2.6, wave 3 is recommended.

The acknowledgment message of AT+GTBCS command:

➤ +ACK:GTBCS,

<b>Example:</b>			
<b>+ACK:GTBCS,040100,135790246811220,,0019,20090214093254,11F0\$</b>			
Parameter	Length(byte)	Range/Format	Default
Protocol Version	6	XX0000 – XXFFFF, X ∈ {'A' – 'Z','0' – '9'}	
Unique ID	15	IMEI	
Device Name	<=10	'0' – '9' 'a' – 'z' 'A' – 'Z' ' ' ' _ '	
Serial Number	4	0000 – FFFF	
Send Time	14	YYYYMMDDHHMMSS	
Count Number	4	0000 – FFFF	
Tail Character	1	\$	\$

### 3.3. Report

This section defines the formats of the report messages. Due to the max length of SMS message (160 bytes), it is recommended to carefully set the *<Report Items Mask>* in **AT+GTCFG** to limit the length of the report which contains GPS position information if you choose SMS as the transmit method. Otherwise the report will be truncated to fit the length of SMS message.

#### 3.3.1. Position Related Report

➤ **+RESP:GTTOW,**

If the tow alarm is enabled by the command **AT+GTTOW**, the device will send the message **+RESP:GTTOW** to the backend server when the motion sensor detects tow.

➤ **+RESP:GTDIS,**

If the status of digital inputs are detected being changed, the device will send the message **+RESP:GTDIS** to the backend server.

➤ **+RESP:GTIOB,**

If the IO combination is set and the corresponding condition appears, the device will report the message **+RESP:GTIOB** to the backend server.

➤ **+RESP:GTGEO,**

If Geo-Fence is configured and enabled, the device will send the message **+RESP:GTGEO** to the backend server according to settings when the device enters or exits the Geo-Fence.

➤ **+RESP:GTSPD,**

If the speed alarm is enabled, the device will send the message **+RESP:GTSPD** to the backend server when the speed of the device is detected into the alarm range,.

➤ **+RESP:GTSOS,**

If the SOS function is enabled, the device will send the message **+RESP:GTSOS** to the backend server when the corresponding digital input port triggers SOS.

➤ **+RESP:GTRTL,**

After the device receives the command **AT+GTRTO**, it will start GPS to get the current position and then send the message **+RESP:GTRTL** to the backend server.

➤ **+RESP:GTDOG,**

The protocol watchdog reboot message.

➤ **+RESP:GTIGL,**

The protocol ignition on and ignition off location message.

➤ **+RESP:GTHBM,**

If harsh behavior is detected, this message will be sent to the backend server.

All of the above report messages have the same format as shown below.

**Example:**

```
+RESP:GTTOW,040100,135790246811220,,,10,1,1,4.3,92,70.0,121.354335,31.222073,200902
14013254,0460,0000,18d8,6141,00,2000.0,20090214093254,11F0$
```

```
+RESP:GTDIS,040100,135790246811220,,,20,1,1,4.3,92,70.0,121.354335,31.222073,2009021
4013254,0460,0000,18d8,6141,00,2000.0,20090214093254,11F0$
```

```
+RESP:GTIOB,040100,135790246811220,,,10,1,1,4.3,92,70.0,121.354335,31.222073,2009021
4013254,0460,0000,18d8,6141,00,2000.0,20090214093254,11F0$
```

```
+RESP:GTGEO,040100,135790246811220,,,00,1,1,4.3,92,70.0,121.354335,31.222073,200902
14013254,0460,0000,18d8,6141,00,2000.0,20090214093254,11F0$
```

```
+RESP:GTSPD,040100,135790246811220,,,00,1,1,4.3,92,70.0,121.354335,31.222073,2009021
4013254,0460,0000,18d8,6141,00,2000.0,20090214093254,11F0$
```

```
+RESP:GTSOS,040100,135790246811220,,,00,1,1,4.3,92,70.0,121.354335,31.222073,2009021
4013254,0460,0000,18d8,6141,00,2000.0,20090214093254,11F0$
```

```
+RESP:GTRTL,040100,135790246811220,,,00,1,1,4.3,92,70.0,121.354335,31.222073,200902
14013254,0460,0000,18d8,6141,00,2000.0,20090214093254,11F0$
```

```
+RESP:GTDOG,040100,135790246811220,,,01,1,1,4.3,92,70.0,121.354335,31.222073,200902
14013254,0460,0000,18d8,6141,00,2000.0,20090214093254,11F0$
```

```
+RESP:GTIGL,040100,135790246811220,,,00,1,1,4.3,92,70.0,121.354335,31.222073,2009021
4013254,0460,0000,18d8,6141,00,2000.0,20090214093254,11F0$
```

```
+RESP:GTHBM,040100,135790246811220,,,10,1,1,4.3,92,70.0,121.354335,31.222073,200902
14013254,0460,0000,18d8,6141,00,2000.0,20090214093254,11F0$
```

```
+RESP:GTHBM,040100,135790246811220,,,11,1,1,24.3,92,70.0,121.354335,31.222073,20090
214013254,0460,0000,18d8,6141,00,2000.0,20090214093254,11F0$
```

Parameter	Length(byte)	Range/Format	Default
Protocol Version	6	XX0000 – XXXFFF, X ∈ {'A' – 'Z','0' – '9'}	
Unique ID	15	IMEI	

Device Name	<=10	'0' - '9' 'a' - 'z' 'A' - 'Z' '-' ' ' '_'	
Reserved			
Report ID/Report Type	2	X(0-4)X(0-3)	
Number	1	0 - 1	
GPS Accuracy	<=2	0 1 - 50	
Speed	<=5	0.0 - 999.9 km /h	
Azimuth	<=3	0 - 359	
Altitude	<=8	(-)xxxxx.x m	
Longitude	<=11	(-)xxx.xxxxxx	
Latitude	<=10	(-)xx.xxxxxx	
GPS UTC Time	14	YYYYMMDDHHMMSS	
MCC	4	0XXX	
MNC	4	0XXX	
LAC	4	XXXX	
Cell ID	4	XXXX	
Reserved	2	00	
Mileage	<=9	0.0 - 4294967.0 km	
Send Time	14	YYYYMMDDHHMMSS	
Count Number	4	0000 - FFFF	
Tail Character	1	\$	\$

✧ <Report ID/Report Type>: The report ID and the type of the report type in hex format. 4 high bits mean report ID and 4 low bits means report type.

Report ID has different meanings in different messages as below.

- The ID of digital input port which triggers the report message +**RESP:GTDIS** and +**RESP:GTSOS**. The range is 1 - 4.
- The ID of the bound IO which triggers the report message +**RESP:GTIOB**. The range is 0 - 3.
- The ID of Geo-Fence in the report message +**RESP:GTGEO**. The range is 0 - 4.
- The ID of the digital input port which triggers the reboot message +**RESP:GTDOG**. The valid value is 2 or 3.
- The speed level of which the harsh behavior is detected in message +**RESP:GTHBM**. 3 is high speed, 2 is medium speed and 1 is low speed.

For the rest of the messages, it will always be 0.

Report type has different meanings in different messages as below.

- In the **+RESP:GTDIS** report message generated by the digital input
  - 0: The current logical status of the input port is disable status.
  - 1: The current logical status of the input is enable status.
- In the **+RESP:GTIOB** report message generated by bound IO
  - 0: The current logical status of the bound IO does not meet the alarm condition.
  - 1: The current logical status of the bound IO meets the alarm condition.
- In Geo-Fence report message **+RESP:GTGEO**
  - 0: Exit from the Geo-Fence.
  - 1: Enter the Geo-Fence.
- In the message of speed alarm **+RESP:GTSPD**
  - 0: Outside of the predefined speed range.
  - 1: Inside of the predefined speed range.
- In the message of protocol watch dog reboot message **+RESP:GTDOG**
  - 1: Reboot message for time based working mode
  - 2: Reboot message for ignition on working mode
  - 3: Reboot message for input triggered reboot
- In the message of harsh behavior monitoring message **+RESP:GTHBM**
  - 0: Harsh braking behavior
  - 1: Harsh acceleration behavior
- In the message of ignition on or off location message **+RESP:GTIGL**
  - 0: ignition on.
  - 1: ignition off.

For the rest of the messages, it will always be 0.

- ✧ *<Number>*: The number of the GPS position included in the report message. Generally, it equals to 1.
- ✧ *<GPS Accuracy>*: The HDOP defined in NMEA0183 (The National Marine Electronics Association (NMEA) is a non-profit association of manufacturers, distributors, dealers, educational institutions, and others interested in peripheral marine electronics occupations. The NMEA 0183 standard defines an electrical interface and data protocol for communications between marine instrumentation.). The range of value is 0 – 50. Here 0 means no GPS fix.
- ✧ *<Speed>*: The current speed. Unit: km/h
- ✧ *<Azimuth>*: The azimuth of the GPS fixing.
- ✧ *<Altitude>*: The height above the sea level.
- ✧ *<Longitude>*: The longitude of the current position.
- ✧ *<Latitude>*: The latitude of the current position.
- ✧ *<GPS UTC Time>*: The UTC time from the GPS chip.
- ✧ *<MCC>*: Mobile country code. It is 3 digits in length and ranges from 000–999.
- ✧ *<MNC>*: Mobile network code. It is 3 digits in length and ranges from 000–999.
- ✧ *<LAC>*: Location area code in hex format.
- ✧ *<Cell ID>*: Cell ID in hex format.
- ✧ *<Mileage>*: The current total mileage.

➤ **+RESP:GTFRI,**

If fixed report is enabled, the device will send the message **+RESP:GTFRI** to the backend server according to the working mode.

**Example:**

**+RESP:GTFRI,040100,135790246811220,,,10,1,1,4.3,92,70.0,121.354335,31.222073,20090214013254,0460,0000,18d8,6141,00,2000.0,12345:12:34,,,,00,00,,,20090214093254,11F0\$**

**+RESP:GTFRI,040100,135790246811220,,,10,2,1,4.3,92,70.0,121.354335,31.222073,20090214013254,0460,0000,18d8,6141,00,0,4.3,92,70.0,121.354335,31.222073,20090101000000,0460,000,18d8,6141,00,2000.0,12345:12:34,,,,00,00,,,20090214093254,11F0\$**

Parameter	Length(byte)	Range/Format	Default
Protocol Version	6	XX0000 – XXFFFF, X ∈ {'A' – 'Z','0' – '9'}	
Unique ID	15	IMEI	
Device Name	<=10	'0' – '9' 'a' – 'z' 'A' – 'Z' '-' '_'	
Analog Input VCC	<=5	0 – 28000 mV	
Report ID/Report Type	2	X(1-4)X(0-1)	
Number	<=2	0 – 15	
GPS Accuracy	<=2	0 1 – 50	
Speed	<=5	0.0 – 999.9 km /h	
Azimuth	<=3	0 – 359	
Altitude	<=8	(-)xxxxx.x m	
Longitude	<=11	(-)xxx.xxxxxx	
Latitude	<=10	(-)xx.xxxxxx	
GPS UTC Time	14	YYYYMMDDHHMMSS	
MCC	4	0XXX	
MNC	4	0XXX	
LAC	4	XXXX	
Cell ID	4	XXXX	
Reserved	2	00	
Mileage	<=9	0.0 – 4294967.0 km	
Hour Meter Count	11	HHHHH:MM:SS	

Multi Analog VCC1	<=4	250~3000 mV	
Multi Analog VCC2	<=4	250~3000 mV	
Multi Analog VCC3	<=4	250~3000 mV	
Digital Input	2	00 – 0F	
Digital Output	2	00 – 0F	
Reserved			
Reserved			
Send Time	14	YYYYMMDDHHMMSS	
Count Number	4	0000 – FFFF	
Tail Character	1	\$	\$

- ✧ *<Analog Input VCC>*: The value of the analog input voltage. If using command **AT+GTAIS** to set the device report the analog input voltage periodically with fixed report, the device will send the current analog input voltage along with **+RESP:GTFRI** message to the backend server. If not set, this field will be reserved.
- ✧ *<Report ID/Report Type>*: Indicate the working mode of the fixed report and the type of the message.  
Report ID has four meanings as below.
  - 1: fixed timing report.
  - 2: fixed distance report.
  - 3: fixed mileage report.
  - 4: fixed timing and mileage report.
  - 5: fixed timing or mileage report.
 Report type has two meanings as below.
  - 0: the normal fixed report.
  - 1: corner report which indicates that the device just turns around a corner.
- ✧ *<Number>*: The number of the GPS position included in the report message. In the message **+RESP:GTFRI**, it probably includes one or several GPS position according to the setting of *<Send Interval>* and *<Check Interval>*. If multi-position in one **+RESP:GTFRI** message, the green part repeats.
- ✧ *<Hour Meter Count>*: If hour meter counter function is enabled by the command **AT+GTHMC**, total hours meter counted when engine is on will be reported in this field. It is formatted with 5 hour digits and 2 minute digits and 2 second digits and ranges from 00000:00:00– 99999:00:00. If the function is disabled, this field will be reserved.
- ✧ *<Multi Analog VCC 1~3>*: The value of the multi analog input 1~3 voltage. If using command **AT+GTMAI** to set the device report the multi analog input 1~3 voltage periodically with fixed report, the *device* will send the current analog input 1~3 voltage along with **+RESP:GTFRI** message to the backend server. If not set, this field will be reserved.



➤ **+RESP:GTAIS,**

If the analog input alarm is enabled by the command **AT+GTAIS**, the device will send the message **+RESP:GTAIS** to the backend server when analog input voltage enters the alarm range.

➤ **+RESP:GTMAI,**

If the analog input alarm is enabled by the command **AT+GTMAI**, the device will send the message **+RESP:GTMAI** to the backend server when analog input voltage enters the alarm range.

All of the above report messages have the same format as shown below.

<b>Example:</b>			
<b>+RESP:GTAIS,040100,135790246811220,,13500,00,1,1,4.3,92,70.0,121.354335,31.222073,20090214013254,0460,0000,18d8,6141,00,2000.0,20090214093254,11F0\$</b>			
<b>+RESP:GTMAI,040100,135790246811220,,1980,11,1,1,4.3,92,70.0,121.354335,31.222073,20090214013254,0460,0000,18d8,6141,00,2000.0,20090214093254,11F0\$</b>			
Parameter	Length(byte)	Range/Format	Default
Protocol Version	6	XX0000 – XXXFFF, X ∈ {'A' – 'Z','0' – '9'}	
Unique ID	15	IMEI	
Device Name	<=10	'0' – '9' 'a' – 'z' 'A' – 'Z' '-' '_'	
Analog Input VCC	<=5	0 – 28000   0 – 3000mV	
Report ID/Report Type	2	X(0-3)X(0-1)	
Number	<=2	0 – 1	
GPS Accuracy	<=2	0 1 – 50	
Speed	<=5	0.0 – 999.9 km /h	
Azimuth	<=3	0 – 359	
Altitude	<=8	(-)xxxxx.x m	
Longitude	<=11	(-)xxx.xxxxxx	
Latitude	<=10	(-)xx.xxxxxx	
GPS UTC Time	14	YYYYMMDDHHMMSS	
MCC	4	0XXX	
MNC	4	0XXX	
LAC	4	XXXX	
Cell ID	4	XXXX	

Reserved	2	00	
Mileage	<=9	0.0 – 4294967.0 km	
Send Time	14	YYYYMMDDHHMMSS	
Count Number	4	0000 – FFFF	
Tail Character	1	\$	\$

- ✧ <Analog Input VCC>: The value of the analog input voltage. When the voltage of the analog input meets the alarm condition as set by command **AT+GTAIS** or **AT+GTMAI**, the device will send the current analog input voltage with **+RESP:GTAIS** or **+RESP:GTMAI** message to the backend server
- ✧ <Report ID/Report Type>: The report ID and the type of the report type in hex format. 4 high bits mean report ID and 4 low bits means report type.  
Report ID has different meanings in these two messages.
  - The ID of analog input port which triggers report message **+RESP:GTAIS**. The value is 0.
  - The ID of analog input port which triggers report message **+RESP:GTMAI**. The range is 1-3.
 Report type has two meanings as below.
  - 0: Outside of the predefined range.
  - 1: Inside of the predefined range.
- ✧ <Number>: The number of the GPS position included in the report message. Generally, it equals to 1.

➤ **+RESP:GTLBC,**

If the parameter <Location By Call> is set to 1 by the command **AT+GTCFG**, the device will get and send the current position to the backend server by the message **+RESP:GTLBC** when there is an incoming call.

<b>Example:</b>			
<b>+RESP:GTLBC,040100,135790246811220,+,8613800000000,1,4.3,92,70.0,121.354335,31.222073,20090214013254,0460,0000,18d8,6141,00,20090214093254,11F0\$</b>			
Parameter	Length(byte)	Range/Format	Default
Protocol Version	6	XX0000 – XXXFFF, X ∈ {'A' – 'Z', '0' – '9'}	
Unique ID	15	IMEI	
Device Name	<=10	'0' – '9' 'a' – 'z' 'A' – 'Z' ' ' ' _'	
Call Number	<=20	phone number	
GPS Accuracy	<=2	0 1 – 50	

Speed	<=5	0.0 – 999.9 km /h	
Azimuth	<=3	0 – 359	
Altitude	<=8	(-)xxxxx.x m	
Longitude	<=11	(-)xxx.xxxxxx	
Latitude	<=10	(-)xx.xxxxxx	
GPS UTC Time	14	YYYYMMDDHHMMSS	
MCC	4	0XXX	
MNC	4	0XXX	
LAC	4	XXXX	
Cell ID	4	XXXX	
Reserved	2	00	00
Send Time	14	YYYYMMDDHHMMSS	
Count Number	4	0000 – FFFF	
Tail Character	1	\$	\$

✧ <Call Number>: The phone number of the incoming call which triggers the report message.

### 3.3.2. Device Information Report

If the device information report function is enabled by the command **AT+GTCFG**, the device will send the device information by the message **+RESP:GTINF** to the backend server periodically.

➤ **+RESP:GTINF**,

**Example:**

**+RESP:GTINF,040100,135790246811220,,16,898600810906F8048812,16,0,1,,0,4,4,0,0,0,20090214013254,13000,00,00,+0800,0,20090214093254,11F0\$**

Parameter	Length(byte)	Range/Format	Default
Protocol Version	6	XX0000 – XXFFFF, X ∈ {'A' – 'Z', '0' – '9'}	
Unique ID	15	IMEI	
Device Name	<=10	'0' – '9' 'a' – 'z' 'A' – 'Z' '-' '_'	
State	2	11 12 21 22 41 42 1A 16	
ICCID	20		
CSQ RSSI	<=2	0 – 31 99	
CSQ BER	<=2	0 – 7 99	
Main Supply	1	0 1	
5V Output Status	1	0 1	
Backup Battery On	1	0 1	
Backup Battery VCC	<=4	0.0 – 4.5 V	
Charging	1	0 1	
LED On	1	0 1	
GPS On Need	1	0 1	
External GPS Antenna	1	0 1 3	
Last Fix UTC Time	14	YYYYMMDDHHMMSS	
Analog Input VCC	<=5	0 – 28000 mV	
Digital Input	2	00 – 0F	
Digital Output	2	00 – 0F	
Time Zone Offset	5	± HHMM	
Daylight Saving	1	0 1	
Send Time	14	YYYYMMDDHHMMSS	

Count Number	4	0000 – FFFF	
Tail Character	1	\$	\$

- ✧ <State>: The current motion state of the device.
  - 16 (**Tow**): The device attached vehicle is ignition off and it is towed.
  - 1A (**Fake Tow**): The device attached vehicle is ignition off and it might be towed.
  - 11 (**Ignition Off Rest**): The device attached vehicle is ignition off and it is motionless.
  - 12 (**Ignition Off Motion**): The device attached vehicle is ignition off and it is moving before it is treated as being towed.
  - 21 (**Ignition On Rest**): The device attached vehicle is ignition on and it is motion less
  - 22 (**Ignition On Motion**): The device attached vehicle is ignition on and it is moving
  - 41 (**Sensor Rest**): The device attached vehicle is motionless without ignition signal detected
  - 42 (**Sensor Motion**): The device attached vehicle is moving without ignition signal detected
- ✧ <ICCID>: The ICCID of the SIM card.
- ✧ <CSQ RSSI>: The signal strength level.

CSQ RSSI	Signal Strength (dBm)
0	<-133
1	-111
2 – 30	-109 – -53
31	>-51
99	Unknown

- ✧ <CSQ BER>: The quality of the GSM signal. The range is 0-7, 99 for unknown.
- ✧ <Main Supply>: Whether the main power supply is connected.
  - 0: Not connected
  - 1: Connected
- ✧ <5V Output Status>: The state of 5V output.
  - 0: 5V output is disabled
  - 1: 5V output is enabled
- ✧ <Backup Battery On>: The state of the backup battery.
  - 0: Do not use backup battery
  - 1: Use backup battery to provide power supply
- ✧ <Backup Battery VCC>: The voltage of the backup battery. The value of this field is only valid when the external power is not connected.
- ✧ <Charging>: Whether the backup battery is charging when the main power supply is connected.
  - 0: Not charging
  - 1: Charging
- ✧ < External GPS Antenna>: the status of the external GPS antenna.
  - 0: The external GPS antenna of the device is working.
  - 1: The external GPS antenna of the device is detected in open circuit state.
  - 3: The external GPS antenna of the device is in unknown state.

- ✧ <Last Fix UTC Time>: The UTC time of the latest successful GPS fixing.
- ✧ <Analog Input VCC>: The voltage of the analog input.
- ✧ <Digital Input>: A bitwise hex integer to represents the logical status of the digital input. From the lowest bit to the highest bit, each bit represents one of the digital inputs 1 – 4 respectively. For each bit, 0 means disable status, 1 means enable status.
- ✧ <Digital Output>: A bitwise hex integer to represents the logical status of the digital output. From the lowest bit to the highest bit, each bit represents one of the digital outputs 1 – 4 respectively. For each bit, 0 means disable status, 1 means enable status
- ✧ <Time Zone Offset>: The time offset of the local time zone to the UTC time.
- ✧ <Daylight Saving>: The current setting of the daylight saving.
  - 0: Daylight saving is disabled
  - 1: Daylight saving is enabled

### 3.3.3. Report of Real Time Querying

#### 3.3.3.1. +RESP:GTGPS

After the device receives the command **AT+GTRTO** to read the GPS information, it will send the GPS information to the backend server by the message **+RESP:GTGPS**.

➤ **+RESP:GTGPS,**

**Example:**

**+RESP:GTGPS,040100,135790246811220,,0,,,0000,003E,0,20090214013254,20090214093254,11F0\$**

Parameter	Length(byte)	Range/Format	Default
Protocol Version	6	XX0000 – XXXFFF, X ∈ {'A' – 'Z', '0' – '9'}	
Unique ID	15	IMEI	
Device Name	<=10	'0' – '9' 'a' – 'z' 'A' – 'Z' '-' '_'	
GPS On Need	1	0 1	
Reserved	0		
Reserved	0		
Report Items Mask	4	0000 – FFFF	
FRI Report Mask	4	0000 – FFFF	
External GPS Antenna	1	0 1 3	
Last Fix UTC Time	14	YYYYMMDDHHMMSS	
Send Time	14	YYYYMMDDHHMMSS	
Count Number	4	0000 – FFFF	
Tail Character	1	\$	\$

✧ <Report Items Mask>: Refer to <Report Items Mask> of **AT+GT CFG** command

✧ <FRI Report Mask>: Refer to <Report Mask> of **AT+GT FRI** command.

#### 3.3.3.2. +RESP:GTALL

After the device receives the command **AT+GTRTO** to read all the configurations, it will send all configurations to the backend server by the message **+RESP:GTALL**. This message only sends via GPRS even if the report mode is force on SMS.

➤ **+RESP:GTALL,**

**Example:**

```
+RESP:GTALL,040100,135790246811220,,BSI,cmnet,,,,,,,,SRI,3,1,1,116.226.44.17,7011,116.2
26.45.229,7012,+8613812341234,15,1,,,,CFG,gv200,gv200,1,123.4,0,0,0000,1,0000,02FF,1,0,1
,300,0,3,1,0,00100:00:00,,TOW,1,10,0,120,1,0,5,10,200,10,4,,,,,,,,AIS,2,250,12000,3,2,1,1,0,0,
1,,,,DIS,1,2,3,2,1,4,3,1,2,4,3,4,,,,IOB,0,1A,A,3,1,0,8,3,,,,1,0,0,0,0,0,0,,,,2,0,0,0,0,0,0,,,,3,0
,0,0,0,0,0,0,,,,TMZ,-0330,0,,,,FRI,1,1,0,1,1000,2300,180,30,1000,1000,21,0,600,,GEO,0,3,12
1.412248,31.187891,1000,600,1,1,0,0,,,,1,0,,0,0,0,0,0,0,,,,2,0,,0,0,0,0,0,0,,,,3,0,,0,0,0,0,0,0,,,,
4,0,,0,0,0,0,0,0,,,,SPD,1,80,120,60,300,1,1,0,0,,,,,,,,SOS,1,4,+8613812341234,1,1,0,0,5,4,,,M
ON,1,+8613812341234,1,0,,,,PIN,1,0000,0,,,,OWH,1,1F,0900,1200,1300,1730,,,2,1,1,0,0,,,,D
OG,1,60,1,0130,,1,3,,,,MAI,1,0,0,0,0,,0,0,0,0,0,2,0,0,0,0,,0,0,0,0,0,3,0,0,0,0,,0,0,0,0,0,,,IDL,1,2
,1,,,,1,1,0,0,,,,HBM,1,,,100,21,6,,60,21,6,,,21,15,,1,1,8,3,,,,HMC,1,12345:12:34,,,,,WLT,3,1
3813888888,1391399999,,,,,,,,BCS,2,13813888888,0,3,13913999999,0,4,,0,5,4,1,1,1,8,3,,,,
URT,1,5,8,1,0,0,0,,HRM,,,FF,FFFFFFFF,FFFFFFFF,FFFF,FF,,,,,20090214093254,11F0$
```

Parameter	Length(byte)	Range/Format	Default
Protocol Version	6	XX0000 – XXXFFF, X ∈ {'A' – 'Z', '0' – '9'}	
Unique ID	15	IMEI	
Device Name	<=10	'0' – '9' 'a' – 'z' 'A' – 'Z' ' ' ' _'	
BSI	3	BSI	BSI
APN	<=40		
APN User Name	<=30		
APN Password	<=30		
Reserved	0		
Reserved	0		
Reserved	0		
Reserved	0		
SRI	3	SRI	SRI
Report Mode	1	0 – 6	
Reserved	1	0 1	
Buffer Mode	1	0 1 2	
Main Server IP / Domain Name	<=60		
Main Server Port	<=5	0 – 65535	
Backup Server IP	<=15		
Backup Server Port	<=5	0 – 65535	



SMS Gateway	<=20		
Heartbeat Interval	<=3	0 5 – 360min	
SACK Enable	1	0 1	
Reserved	0		
Reserved	0		
Reserved	0		
Reserved	0		
CFG	3	CFG	CFG
Password	4 – 6	'0' – '9' 'a' – 'z' 'A' – 'Z'	
Device Name	<=10	'0' – '9' 'a' – 'z' 'A' – 'Z' '-' '_'	
ODO Enable	1	0 1	
ODO Initial Mileage	<=9	0.0 – 4294967.0Km	
GPS On Need	1	0 1	
Gsm report	1	0 1 2 3	0
Report Items Mask	4	0000 – FFFF	
Power Saving Mode	1	0 – 2	
Reserved	4	0000 – FFFF	0000
Event Mask	4	0000 – FFFF	
Backup Battery On	1	0 1	
LED On	1	0 1	
Info Report Enable	1	0 1	
Info Report Interval	<=5	30 – 86400sec	
Location By Call	1	0 1 2	
Echo Suppression	1	1 – 4	
Backup Battery Charge Mode	1	0 1	
5V Output Control	1	0 1	0
Maximum Call Time	11	00000:00:00-99999:00:00	
Reserved	0		
TOW	3	TOW	TOW
Tow Enable	1	0 1	

Engine Off to Tow	<=2	5 – 15min	
Fake Tow Delay	<=2	0 – 10min	
Tow Interval	<=5	30 – 86400sec	
Tow Output ID	1	0 – 4	
Tow Output Status	1	0 1	
Tow Output Duration	<=3	0 – 255(× 100ms)	
Tow Output Toggle Times	<=3	0 – 255	
Rest Duration	<=3	0 – 255(× 15sec)	
Motion Duration	<=2	0 – 10(× 100ms)	
Motion Threshold	1	2 – 4	
Reserved	0		
Reserved	0		
Reserved	0		
Reserved	0		
Reserved	0		
Reserved	0		
Reserved	0		
Reserved	0		
AIS	3	AIS	AIS
Mode	1	0 1 2	
Min Threshold	<=5	250 – 28000 mV	
Max Threshold	<=5	250 – 28000 mV	
Sample Period	<=2	0 1 – 12(× 2s)	
Debounce Time	1	0 – 5(× 1s)	
Output ID	1	0 – 4	
Output Status	1	0 1	
Duration	<=3	0 – 255(× 100ms)	
Toggle Times	<=3	0 – 255	
Sync with FRI	1	0 1	
Reserved	0		

Reserved	0		
Reserved	0		
DIS	3	DIS	DIS
Input ID 1	1	1	1
Sample Period	$\leq 2$	0 1 – 12( $\times 2s$ )	
Debounce Time	$\leq 2$	0 – 400( $\times 50ms$ )	
Input ID 2	1	2	2
Enable	1	0 1	
Debounce Time	$\leq 2$	0 – 20( $\times 10ms$ )	
Input ID 3	1	3	3
Enable	1	0 1	
Debounce Time	$\leq 2$	0 – 20( $\times 10ms$ )	
Input ID 4	1	4	4
Sample Period	$\leq 2$	0 1 – 12( $\times 2s$ )	
Debounce Time	$\leq 2$	0 – 400( $\times 50ms$ )	
Reserved	0		
Reserved	0		
Reserved	0		
Reserved	0		
Reserved	0		
IOB	3	IOB	IOB
IOB ID0	1	0	0
Input Mask	2	0 – 3F	
Trigger Mask	2	0 – 3F	
Input Sample Period	$\leq 2$	0 1 – 12( $\times 2s$ )	
Output ID	1	1 – 4	
Output Status	1	0 1	
Duration	$\leq 3$	0 – 255( $\times 100ms$ )	
Toggle Times	$\leq 3$	0 – 255	
Reserved	0		

Reserved	0		
Reserved	0		
Reserved	0		
IOB ID1	1	1	1
Input Mask	2	0 – 3F	
Trigger Mask	2	0 – 3F	
Input Sample Period	$\leq 2$	0 1 – 12( $\times 2s$ )	
Output ID	1	1 – 4	
Output Status	1	0 1	
Duration	$\leq 3$	0 – 255( $\times 100ms$ )	
Toggle Times	$\leq 3$	0 – 255	
Reserved	0		
Reserved	0		
Reserved	0		
Reserved	0		
IOB ID2	1	2	2
Input Mask	2	0 – 3F	
Trigger Mask	2	0 – 3F	
Input Sample Period	$\leq 2$	0 1 – 12( $\times 2s$ )	
Output ID	1	1 – 4	
Output Status	1	0 1	
Duration	$\leq 3$	0 – 255( $\times 100ms$ )	
Toggle Times	$\leq 3$	0 – 255	
Reserved	0		
Reserved	0		
Reserved	0		
Reserved			
IOB ID3	1	2	3
Input Mask	2	0 – 3F	
Trigger Mask	2	0 – 3F	

Input Sample Period	<=2	0 1 – 12(× 2s)	
Output ID	1	1 – 4	
Output Status	1	0 1	
Duration	<=3	0 – 255(× 100ms)	
Toggle Times	<=3	0 – 255	
Reserved	0		
Reserved	0		
Reserved	0		
Reserved			
TMZ	3	TMZ	TMZ
Time Zone	5	- +HHMM	
Daylight Saving	1	0 1	
Reserved	0		
Reserved	0		
Reserved	0		
Reserved	0		
FRI	3	FRI	FRI
Mode	1	0 – 4	
Discard No Fix	2	0 1	
Max Send	<=5	0 – 65535	
Period Enable	1	0 1	
Begin Time	4	HHMM	
End Time	4	HHMM	
Check Interval	<=5	0 30 – 86400sec	
Send Interval	<=5	0 5 – 86400sec	
Distance	<=5	300 – 65535m	
Mileage	<=5	300 – 65535m	
Report Mask	<=4	0000 – FFFF	
Corner Report	<=3	0 – 180	
IGF Report Interval	<=5	300-86400sec	

Reserved	0		
Reserved	0		
GEO	3	GEO	GEO
GEO ID0	1	0	0
Mode	1	0 – 3	
Longitude	$\leq 11$	(-)xxx.xxxxxx	
Latitude	$\leq 10$	(-)xx.xxxxxx	
Radius	$\leq 7$	50 – 6000000m	
Check Interval	$\leq 5$	0   5 – 86400sec	
Output ID	1	0 – 4	
Output Status	1	0 1	
Duration	$\leq 3$	0 – 255( $\times 100$ ms)	
Toggle Times	$\leq 3$	0 – 255	
Reserved	0		
Reserved	0		
Reserved	0		
Reserved	0		
GEO ID1	1	1	1
Mode	1	0 – 3	
Longitude	$\leq 11$	(-)xxx.xxxxxx	
Latitude	$\leq 10$	(-)xx.xxxxxx	
Radius	$\leq 7$	50 – 6000000m	
Check Interval	$\leq 5$	0   5 – 86400sec	
Output ID	1	0 – 4	
Output Status	1	0 1	
Duration	$\leq 3$	0 – 255( $\times 100$ ms)	
Toggle Times	$\leq 3$	0 – 255	
Reserved	0		
Reserved	0		
Reserved	0		

Reserved	0		
GEO ID2	1	2	2
Mode	1	0 – 3	
Longitude	<=11	(-)xxx.xxxxxx	
Latitude	<=10	(-)xx.xxxxxx	
Radius	<=7	50 – 6000000m	
Check Interval	<=5	0   5 – 86400sec	
Output ID	1	0 – 4	
Output Status	1	0 1	
Duration	<=3	0 – 255(× 100ms)	
Toggle Times	<=3	0 – 255	
Reserved	0		
Reserved	0		
Reserved	0		
Reserved	0		
GEO ID3	1	3	3
Mode	1	0 – 3	
Longitude	<=11	(-)xxx.xxxxxx	
Latitude	<=10	(-)xx.xxxxxx	
Radius	<=7	50 – 6000000m	
Check Interval	<=5	0   5 – 86400sec	
Output ID	1	0 – 4	
Output Status	1	0 1	
Duration	<=3	0 – 255(× 100ms)	
Toggle Times	<=3	0 – 255	
Reserved	0		
Reserved	0		
Reserved	0		
Reserved	0		
GEO ID4	1	4	4

Mode	1	0 – 3	
Longitude	<=11	(-)xxx.xxxxxx	
Latitude	<=10	(-)xx.xxxxxx	
Radius	<=7	50 – 600000m	
Check Interval	<=5	0   5 – 86400sec	
Output ID	1	0 – 4	
Output Status	1	0 1	
Duration	<=3	0 – 255(×100ms)	
Toggle Times	<=3	0 – 255	
Reserved	0		
Reserved	0		
Reserved	0		
Reserved	0		
SPD	3	SPD	SPD
Mode	1	0 1 2	
Min Speed	<=3	0 – 400km/h	
Max Speed	<=3	0 – 400km/h	
Validity	<=4	15 – 3600sec	
Send Interval	<=4	30 – 3600sec	
Output ID	1	0 – 4	
Output Status	1	0 1	
Duration	<=3	0 – 255(×100ms)	
Toggle Times	<=3	0 – 255	
Reserved	0		
Reserved	0		
Reserved	0		
Reserved	0		
Reserved	0		
Reserved	0		
Reserved	0		



Reserved	0		
Reserved	0		
Reserved	0		
Reserved	0		
SOS	3	SOS	SOS
Mode	1	0 – 4	
Digital Input ID	1	0 2 – 4	
SOS Number	<=20		
Output ID	1	0 – 4	
Output Status	1	0 1	
Duration	<=3	0 – 255(×100ms)	
Toggle Times	<=3	0 – 255	
SOS Microphone	2	0 – 10	
SOS Speaker	1	0 – 7	
Reserved	0		
Reserved	0		
MON	3	MON	MON
Mode	1	0 – 3	
Stealthy Phone Number	<=20		
Stealthy Microphone	2	0 – 15	
Stealthy Speaker	1	0 – 7	
Reserved	0		
Reserved	0		
Reserved	0		
Reserved	0		
PIN	3	PIN	PIN
Enable Auto-unlock PIN	1	0 1	
PIN	1	'0' – '9'	
SIM PIN Lock	1	0 1	
Reserved	0		

Reserved	0		
Reserved	0		
Reserved	0		
OWH	3	OWH	OWH
Mode	1	0 1 2 3	
Day of Work	<=2	0 – 7F	
Working Hours Start1	4	HHMM	
Working Hours End1	4	HHMM	
Working Hours Start2	4	HHMM	
Working Hours End2	4	HHMM	
Reserved	0		
Reserved	0		
Digital Input ID	1	0 4	
Digital Output ID	1	0 – 4	
Output Status	1	0 1	
Duration	<=3	0 – 255(×100ms)	
Toggle Times	<=3	0 – 255	
Reserved	0		
Reserved	0		
Reserved	0		
Reserved	0		
DOG	3	DOG	DOG
Mode	1	0 1 2	
Ignition Frequency	<=3	10 – 120min	
Interval	<=2	1 – 30	
Time	4	HHMM	
Reserved	0		
Report Before Reboot	1	0 1	
Input ID	1	0 2 3	
Reserved	0		

Reserved	0		
Reserved	0		
Reserved	0		
MAI	3	MAI	MAI
Analog Input ID1	1	1	1
Mode	1	0 1 2	
Min Threshold	$\leq 4$	250 – 2700 mV	
Max Threshold	$\leq 4$	250 – 2700 mV	
Sample Period	$\leq 2$	0 1 – 12( $\times 2s$ )	
Reserved	0		
Output ID	1	0 – 4	
Output Status	1	0 1	
Duration	$\leq 3$	0 – 255( $\times 100ms$ )	
Toggle Times	$\leq 3$	0 – 255	
Sync with FRI	1	0 1	
Analog Input ID2	1	2	2
Mode	1	0 1 2	
Min Threshold	$\leq 4$	250 – 2700 mV	
Max Threshold	$\leq 4$	250 – 2700 mV	
Sample Period	$\leq 2$	0 1 – 12( $\times 2s$ )	
Reserved	0		
Output ID	1	0 – 4	
Output Status	1	0 1	
Duration	$\leq 3$	0 – 255( $\times 100ms$ )	
Toggle Times	$\leq 3$	0 – 255	
Sync with FRI	1	0 1	
Analog Input ID3	1	3	3
Mode	1	0 1 2	
Min Threshold	$\leq 4$	250 – 2700 mV	
Max Threshold	$\leq 4$	250 – 2700 mV	

Sample Period	$\leq 2$	0 1 – 12( $\times 2s$ )	
Reserved	0		
Output ID	1	0 – 4	
Output Status	1	0 1	
Duration	$\leq 3$	0 – 255( $\times 100ms$ )	
Toggle Times	$\leq 3$	0 – 255	
Sync with FRI	1	0 1	
Reserved	0		
Reserved	0		
Reserved	0		
<b>IDL</b>	<b>3</b>	<b>IDL</b>	<b>IDL</b>
Mode	1	0 1	
Time to Stationary	1	1 – 5 min	
Time to Movement	1	1 – 5 min	
Reserved	0		
Reserved	0		
Reserved	0		
Reserved	0		
Output ID	1	0 – 4	
Output Status	1	0 1	
Duration	$\leq 3$	0 – 255( $\times 100ms$ )	
Toggle Times	$\leq 3$	0 – 255	
Reserved	0		
Reserved	0		
Reserved	0		
Reserved	0		
<b>HBM</b>	<b>3</b>	<b>HBM</b>	<b>HBM</b>
HBM Enable	1	0 1	
Reserved	0		
Reserved	0		

High Speed	$\leq 3$	100 – 400km/h	
$\Delta V_{hb}$	$\leq 3$	0 – 100km/h	
$\Delta V_{ha}$	$\leq 3$	0 – 100km/h	
Reserved	0		
Medium Speed	$\leq 3$	100 – 400km/h	
$\Delta V_{mb}$	$\leq 3$	0 – 100km/h	
$\Delta V_{ma}$	$\leq 3$	0 – 100km/h	
Reserved	0		
Reserved	0		
$\Delta V_{lb}$	$\leq 3$	0 – 100km/h	
$\Delta V_{la}$	$\leq 3$	0 – 100km/h	
Reserved	0		
Output ID	1	0 – 4	
Output Status	1	0 1	
Duration	$\leq 3$	0 – 255( $\times 100$ ms)	
Toggle Times	$\leq 3$	0 – 255	
Reserved	0		
Reserved	0		
Reserved	0		
Reserved	0		
HMC	3	HMC	HMC
Hour Meter Enable	1	0 1	
Initial Hour Meter Count	11	00000:00:00-99999:00:00	
Reserved	0		
Reserved	0		
Reserved	0		
Reserved	0		
Reserved	0		
Reserved	0		
Reserved	0		

Reserved	0		
WLT	3	WLT	WLT
Call Filter	1	0 1 2 3	
Start Index	<=2	1 – 10	
End Index	<=2	1 – 10	
Phone Number List	<=20*10		
Reserved	0		
Reserved	0		
Reserved	0		
Reserved	0		
BCS	3	BCS	BCS
Input ID2	1	2	2
Phone Number	<=20		
Hang-up Call	1	0 1	
Input ID3	1	3	3
Phone Number	<=20		
Hang-up Call	1	0 1	
Input ID4	1	4	4
Phone Number	<=20		
Hang-up Call	1	0 1	
Microphone	<=2	0 – 10	
Speaker	1	0 – 7	
Send Position	1	0 1	
Output ID	1	0 – 4	
Output Status	1	0 1	
Duration	<=3	0 – 255(×100ms)	
Toggle Times	<=3	0 – 255	
Reserved	0		
Reserved	0		
Reserved	0		

Reserved	0		
URT	3	URT	URT
Working Mode	1	0 1 2 3	0
Baudrate Index	<=2	1 – 12	12
Data Bits	1	7 – 8	8
Stop Bits	1	1 – 3	1
Parity Bits	1	0 – 4	0
Sleep Enable	1	0 1	0
Input ID of Wakeup	0	0 2	0
Reserved	0		
Reserved	0		
HRM	3	HRM	HRM
Reserved	0		
Reserved	0		
ACK Mask	1	'0' – '9' 'a' – 'f' 'A' – 'F'	EF
Response Mask	4	'0' – '9' 'a' – 'f' 'A' – 'F'	FFFFFFBF
Event Mask	4	'0' – '9' 'a' – 'f' 'A' – 'F'	FFFFFFBF
Information Mask	2	'0' – '9' 'a' – 'f' 'A' – 'F'	FF7D
HBD Mask	1	'0' – '9' 'a' – 'f' 'A' – 'F'	80
Reserved	0		
Reserved	0		
Reserved	0		
Reserved	0		
Send Time	14	YYYYMMDDHHMMSS	
Count Number	4	0000 – FFFF	
Tail Character	1	\$	\$

### 3.3.3.3. +RESP:GTCID

After the device receives the command **AT+GTRTO** to read the ICCID of the SIM card, it will send the ICCID to the backend server by the message **+RESP:GTCID**.

➤ **+RESP:GTCID,**

<b>Example:</b> <b>+RESP:GTCID,040100,135790246811220,,898600810906F8048812,20090214093254,11F0\$</b>			
Parameter	Length(byte)	Range/Format	Default
Protocol Version	6	XX0000 – XXFFFF, X ∈ {'A' – 'Z','0' – '9'}	
Unique ID	15	IMEI	
Device Name	<=10	'0' – '9' 'a' – 'z' 'A' – 'Z' '-' '_'	
ICCID	20		
Send Time	14	YYYYMMDDHHMMSS	
Count Number	4	0000 – FFFF	
Tail Character	1	\$	\$

### 3.3.3.4. +RESP:GTCSQ

After the device receives the command **AT+GTRTO** to read the GSM signal level, it will send the GSM signal level to the backend server by the message **+RESP:GTCSQ**.

➤ **+RESP:GTCSQ,**

<b>Example:</b> <b>+RESP:GTCSQ,040100,135790246811220,,16,0,20090214093254,11F0\$</b>			
Parameter	Length(byte)	Range/Format	Default
Protocol Version	6	XX0000 – XXFFFF, X ∈ {'A' – 'Z','0' – '9'}	
Unique ID	15	IMEI	
Device Name	<=10	'0' – '9' 'a' – 'z' 'A' – 'Z' '-' '_'	
CSQ RSSI	<=2	0 – 31 99	
CSQ BER	<=2	0 – 7 99	
Send Time	14	YYYYMMDDHHMMSS	
Count Number	4	0000 – FFFF	
Tail Character	1	\$	\$

✧ <CSQ RSSI>: The signal strength level.

CSQ RSSI	Signal Strength (dBm)
0	<-133
1	-111
2 – 30	-109 – -53



31	>-51
99	Unknown

- ✧ <CSQ BER>: The quality of the GSM signal. The range is 0-7, 99 for unknown.

### 3.3.3.5. +RESP:GTVR

After the device receives the command **AT+GTRTO** to get the versions (including software version and hardware version), it will send the version information to the backend server by the message **+RESP:GTVR**.

- **+RESP:GTVR,**

<b>Example:</b>			
<b>+RESP:GTVR,040100,135790246811220,,GV200,0100,0101,20090214093254,11F0\$</b>			
Parameter	Length(byte)	Range/Format	Default
Protocol Version	6	XX0000 – XXFFFF, X ∈ {'A' – 'Z', '0' – '9'}	
Unique ID	15	IMEI	
Device Name	<=10	'0' – '9' 'a' – 'z' 'A' – 'Z' '-' ' ' '_'	
Device Type	10	'0' – '9' 'a' – 'z' 'A' – 'Z'	
Software Version	4	0000 – FFFF	
Hardware Version	4	0000 – FFFF	
Send Time	14	YYYYMMDDHHMMSS	
Count Number	4	0000 – FFFF	
Tail Character	1	\$	\$

- ✧ <Device Type>: The type of the device.
- ✧ <Software Version>: The software version. The first two characters represent the major version and the last two characters represent the minor version. For example: **010A** means the version **1.10**.
- ✧ <Hardware Version>: The hardware version. The first two characters represent the major version and the last two characters represent the minor version. For example: **010A** means the version **1.10**.

### 3.3.3.6. +RESP:GTBAT

After the device receives the command **AT+GTRTO** to read the power supply information, it will send the power supply information to the backend server by the message **+RESP:GTBAT**.

- **+RESP:GTBAT,**

<b>Example:</b> <b>+RESP:GTBAT,040100,135790246811220,,1,,0,4.40,0,0,20090214093254,11F0\$</b>			
Parameter	Length(byte)	Range/Format	Default
Protocol Version	6	XX0000 – XXFFFF, X ∈ {'A' – 'Z','0' – '9'}	
Unique ID	15	IMEI	
Device Name	<=10	'0' – '9' 'a' – 'z' 'A' – 'Z' '-' '_'	
Main Supply	1	0 1	
Reserved	0		
Backup Battery On	1	0 1	
Backup Battery VCC	<=4	0.0 – 4.5 V	
Charging	1	0 1	
LED On	1	0 1	
Send Time	14	YYYYMMDDHHMMSS	
Count Number	4	0000 – FFFF	
Tail Character	1	\$	\$

### 3.3.3.7. +RESP:GTIOS

After the device receives the command **AT+GTRTO** to get all the IO ports status, it will send the status to the backend server by the message **+RESP:GTIOS**.

#### ➤ +RESP:GTIOS,

<b>Example:</b> <b>+RESP:GTIOS,040100,135790246811220,,13000,00,00,20090214093254,11F0\$</b>			
Parameter	Length(byte)	Range/Format	Default
Protocol Version	6	XX0000 – XXFFFF, X ∈ {'A' – 'Z','0' – '9'}	
Unique ID	15	IMEI	
Device Name	<=10	'0' – '9' 'a' – 'z' 'A' – 'Z' '-' '_'	
Analog Input VCC	<=5	0 – 28000 mV	
Digital Input	2	00 – 0F	
Digital Output	2	00 – 0F	
Send Time	14	YYYYMMDDHHMMSS	
Count Number	4	0000 – FFFF	

Tail Character	1	\$	\$
----------------	---	----	----

### 3.3.3.8. +RESP:GTTMZ

After the device receives the command **AT+GTRTO** to get the time zone settings, it will send the time zone settings by the message **+RESP:GTTMZ** to the backend server.

➤ **+RESP:GTTMZ,**

<b>Example:</b>			
<b>+RESP:GTTMZ,040100,135790246811220,,+0800,0,20090214093254,11F0\$</b>			
Parameter	Length(byte)	Range/Format	Default
Protocol Version	6	XX0000 – XXXFFF, X ∈ {'A' – 'Z','0' – '9'}	
Unique ID	15	IMEI	
Device Name	<=10	'0' – '9' 'a' – 'z' 'A' – 'Z' '-' '_'	
Time Zone Offset	5	±HHMM	
Daylight Saving	1	0 1	
Send Time	14	YYYYMMDDHHMMSS	
Count Number	4	0000 – FFFF	
Tail Character	1	\$	\$

### 3.3.4. Event Report

The following event reports are triggered when certain events occur.

- +**RESP:GTPNA**: Power on report
- +**RESP:GTPFA**: Power off report
- +**RESP:GTMPN**: The report for connecting main power supply
- +**RESP:GTMPF**: The report for disconnecting main power supply
- +**RESP:GTBTC**: Backup battery starts charging report
- +**RESP:GTSTC**: Backup battery stop charging report.
- +**RESP:GTBPL**: Backup battery low
- +**RESP:GTSTT**: Device motion state indication when the motion state is changed
- +**RESP:GTANT**: External GPS antenna status indication when the state is changed
- +**RESP:GTMON**: Indication of the device is being voice-monitored
- +**RESP:GTPDP**: GPRS connection establishment report
- +**RESP:GTIGN**: ignition on report
- +**RESP:GTIGF**: ignition off report
- +**RESP:GTIDN**: Enter into idling status
- +**RESP:GTIDF**: Leave idling status
- +**RESP:GTGSM**:The report for the information of the service cell and the neighbor cells.

In +**RESP:GTMPN**, +**RESP:GTMPF**, +**RESP:GTBTC**, +**RESP:GTSTC**, +**RESP:GTBPL**, +**RESP:GTSTT**, +**RESP:GTANT**, +**RESP:GTMON**, +**RESP:GTIGN**, +**RESP:GTIGF**, +**RESP:GTIDN** and +**RESP:GTIDF** event reports, the last known GPS information and the current GSM network information are involved.

- +**RESP:GTPNA**,
- +**RESP:GTPFA**,
- +**RESP:GTPDP**,

<b>Example:</b>			
+ <b>RESP:GTPNA,040100,135790246811220,,20090214093254,11F0\$</b>			
+ <b>RESP:GTPFA,040100,135790246811220,,20090214093254,11F0\$</b>			
+ <b>RESP:GTPDP,040100,135790246811220,,20090214093254,11F0\$</b>			
Parameter	Length(byte)	Range/Format	Default
Protocol Version	6	XX0000 – XXXFFF, X ∈ {'A' – 'Z','0' – '9'}	
Unique ID	15	IMEI	
Device Name	<=10	'0' – '9' 'a' – 'z' 'A' – 'Z' ' ' ' _'	
Send Time	14	YYYYMMDDHHMMSS	
Count Number	4	0000 – FFFF	
Tail Character	1	\$	\$

- +RESP:GTMPN,
- +RESP:GTMPF,
- +RESP:GTBTC,

**Example:**

+RESP:GTMPN,040100,135790246811220,,0,4.3,92,70.0,121.354335,31.222073,20090214013254,0460,0000,18d8,6141,00,20090214093254,11F0\$

+RESP:GTMPF,040100,135790246811220,,0,4.3,92,70.0,121.354335,31.222073,20090214013254,0460,0000,18d8,6141,00,20090214093254,11F0\$

+RESP:GTBTC,040100,135790246811220,,0,4.3,92,70.0,121.354335,31.222073,20090214013254,0460,0000,18d8,6141,00,20090214093254,11F0\$

Parameter	Length(byte)	Range/Format	Default
Protocol Version	6	XX0000 – XXFFFF, X ∈ {'A' – 'Z', '0' – '9'}	
Unique ID	15	IMEI	
Device Name	<=10	'0' – '9' 'a' – 'z' 'A' – 'Z' '-' '_'	
GPS Accuracy	<=2	0	0, Last known
Speed	<=5	0.0 – 999.9 km /h	
Azimuth	<=3	0 – 359	
Altitude	<=8	(-)xxxxx.x m	
Longitude	<=11	(-)xxx.xxxxxx	
Latitude	<=10	(-)xx.xxxxxx	
GPS UTC Time	14	YYYYMMDDHHMMSS	
MCC	4	0XXX	
MNC	4	0XXX	
LAC	4	XXXX	
Cell ID	4	XXXX	
Reserved	2	00	00
Send Time	14	YYYYMMDDHHMMSS	
Count Number	4	0000 – FFFF	
Tail Character	1	\$	\$

- +RESP:GTSTC,

**Example:**  
**+RESP:GTSTC,040100,135790246811220,,,0,4.3,92,70.0,121.354335,31.222073,20090214013254,0460,0000,18d8,6141,00,20090214093254,11F0\$**

Parameter	Length(byte)	Range/Format	Default
Protocol Version	6	XX0000 – XXXFFF, X ∈ {'A' – 'Z','0' – '9'}	
Unique ID	15	IMEI	
Device Name	<=10	'0' – '9' 'a' – 'z' 'A' – 'Z' '-' '_'	
Reserved	0		
GPS Accuracy	<=2	0	0, Last known
Speed	<=5	0.0 – 999.9 km /h	
Azimuth	<=3	0 – 359	
Altitude	<=8	(-)xxxxx.x m	
Longitude	<=11	(-)xxx.xxxxxx	
Latitude	<=10	(-)xx.xxxxxx	
GPS UTC Time	14	YYYYMMDDHHMMSS	
MCC	4	0XXX	
MNC	4	0XXX	
LAC	4	XXXX	
Cell ID	4	XXXX	
Reserved	2	00	00
Send Time	14	YYYYMMDDHHMMSS	
Count Number	4	0000 – FFFF	
Tail Character	1	\$	\$

➤ **+RESP:GTBPL,**

**Example:**  
**+RESP:GTBPL,040100,135790246811220,,3.53,0,4.3,92,70.0,121.354335,31.222073,20090214013254,0460,0000,18d8,6141,00,20090214093254,11F0\$**

Parameter	Length(byte)	Range/Format	Default
Protocol Version	6	XX0000 – XXXFFF, X ∈ {'A' – 'Z','0' – '9'}	

Unique ID	15	IMEI	
Device Name	<=10	'0' - '9' 'a' - 'z' 'A' - 'Z' '-' ' ' '_'	
Backup Battery VCC	<=4	0.0 - 4.5 V	
GPS Accuracy	<=2	0	0, Last known
Speed	<=5	0.0 - 999.9 km /h	
Azimuth	<=3	0 - 359	
Altitude	<=8	(-)xxxxx.x m	
Longitude	<=11	(-)xxx.xxxxxx	
Latitude	<=10	(-)xx.xxxxxx	
GPS UTC Time	14	YYYYMMDDHHMMSS	
MCC	4	0XXX	
MNC	4	0XXX	
LAC	4	XXXX	
Cell ID	4	XXXX	
Reserved	2	00	00
Send Time	14	YYYYMMDDHHMMSS	
Count Number	4	0000 - FFFF	
Tail Character	1	\$	\$

➤ **+RESP:GTSTT,**

**Example:**

**+RESP:GTSTT,040100,135790246811220,,16,0,4.3,92,70.0,121.354335,31.222073,20090214013254,0460,0000,18d8,6141,00,20090214093254,11F0\$**

Parameter	Length(byte)	Range/Format	Default
Protocol Version	6	XX0000 - XXFFFF, X ∈ {'A' - 'Z', '0' - '9'}	
Unique ID	15	IMEI	
Device Name	<=10	'0' - '9' 'a' - 'z' 'A' - 'Z' '-' ' ' '_'	
State	2	11 12 21 22 41 42 16	
GPS Accuracy	<=2	0	0, Last known
Speed	<=5	0.0 - 999.9 km /h	

Azimuth	<=3	0 – 359	
Altitude	<=8	(-)xxxxx.x m	
Longitude	<=11	(-)xxx.xxxxxx	
Latitude	<=10	(-)xx.xxxxxx	
GPS UTC Time	14	YYYYMMDDHHMMSS	
MCC	4	0XXX	
MNC	4	0XXX	
LAC	4	XXXX	
Cell ID	4	XXXX	
Reserved	2	00	00
Send Time	14	YYYYMMDDHHMMSS	
Count Number	4	0000 – FFFF	
Tail Character	1	\$	\$

✧ <State>: The current movement state of the device.

- 16 (Tow): The device attached vehicle is ignition off and it is towed.
- 11 (Ignition Off Rest): The device attached vehicle is ignition off and it is motionless.
- 12 (Ignition Off Motion): The device attached vehicle is ignition off and it is moving before it is treated as being towed.
- 21 (Ignition On Rest): The device attached vehicle is ignition on and it is motion less
- 22 (Ignition On Motion): The device attached vehicle is ignition on and it is moving
- 41 (Sensor Rest): The device attached vehicle is motionless without ignition signal detected
- 42 (Sensor Motion): The device attached vehicle is moving without ignition signal detected

➤ +RESP:GTANT,

<b>Example:</b>			
<b>+RESP:GTANT,040100,135790246811220,,0,0,4.3,92,70.0,121.354335,31.222073,20090214013254,0460,0000,18d8,6141,00,20090214093254,11F0\$</b>			
Parameter	Length(byte)	Range/Format	Default
Protocol Version	6	XX0000 – XXFFFF, X ∈ {'A' – 'Z','0' – '9'}	
Unique ID	15	IMEI	
Device Name	<=10	'0' – '9' 'a' – 'z' 'A' – 'Z' ' ' ' _'	
External GPS Antenna	1	0 1 3	



GPS Accuracy	<=2	0	0, Last known
Speed	<=5	0.0 – 999.9 km /h	
Azimuth	<=3	0 – 359	
Altitude	<=8	(-)xxxxx.x m	
Longitude	<=11	(-)xxx.xxxxxx	
Latitude	<=10	(-)xx.xxxxxx	
GPS UTC Time	14	YYYYMMDDHHMMSS	
MCC	4	0XXX	
MNC	4	0XXX	
LAC	4	XXXX	
Cell ID	4	XXXX	
Reserved	2	00	00
Send Time	14	YYYYMMDDHHMMSS	
Count Number	4	0000 – FFFF	
Tail Character	1	\$	\$

✧ < External GPS Antenna>: The current state of the external GPS antenna.

- 0: The external GPS antenna of the device is working.
- 1: The external GPS antenna of the device is detected in open circuit state.
- 3: The external GPS antenna of the device is in unknown state.

➤ +RESP:GTMON,

**Example:**  
**+RESP:GTMON,040100,135790246811220,,+8613812341234,15,0,0,4.3,92,70.0,121.354335,31.222073,20090214013254,0460,0000,18d8,6141,00,20090214093254,11F0\$**

Parameter	Length(byte)	Range/Format	Default
Protocol Version	6	XX0000 – XXFFFF, X ∈ {'A' – 'Z','0' – '9'}	
Unique ID	15	IMEI	
Device Name	<=10	'0' – '9' 'a' – 'z' 'A' – 'Z' '-' '_'	
Stealthy Phone Number/Incoming Call Number	<=20		
MON Type	1	1  2	

Stealthy Microphone	<=2	0 – 15	5
Stealthy Speaker	1	0 – 7	0
GPS Accuracy	<=2	0	0, Last known
Speed	<=5	0.0 – 999.9 km /h	
Azimuth	<=3	0 – 359	
Altitude	<=8	(-)xxxxx.x m	
Longitude	<=11	(-)xxx.xxxxxx	
Latitude	<=10	(-)xx.xxxxxx	
GPS UTC Time	14	YYYYMMDDHHMMSS	
MCC	4	0XXX	
MNC	4	0XXX	
LAC	4	XXXX	
Cell ID	4	XXXX	
Reserved	2	00	00
Send Time	14	YYYYMMDDHHMMSS	
Count Number	4	0000 – FFFF	
Tail Character	1	\$	\$

- ✧ <Stealthy Phone Number/Incoming Call Number>: If <MON Type> is set to 1, <Stealthy Phone Number> set by **AT+GTMON** will be filled in this field; if <MON Type> is set to 2, the number of incoming call which launches voice monitoring will be filled in this field.
- ✧ <MON Type>: The type of voice monitoring. *MON type has two meanings as below:*
  - 1: current call is an outgoing call for voice monitoring.
  - 2: current call is an incoming call for voice monitoring.
- ✧ <Stealthy Microphone>: The volume of stealthy microphone.

➤ **+RESP:GTIGN,**

**Example:**

**+RESP:GTIGN,040100,135790246811220,,1200,0,4.3,92,70.0,121.354335,31.222073,20090214013254,0460,0000,18d8,6141,00,2000.0,,20090214093254,11F0\$**

**+RESP:GTIGN,040100,135790246811220,,1200,0,4.3,92,70.0,121.354335,31.222073,20090214013254,0460,0000,18d8,6141,00,2000.0,12345:12:34,20090214093254,11F0\$**

Parameter	Length(byte)	Range/Format	Default
-----------	--------------	--------------	---------

Protocol Version	6	XX0000 – XXFFFF, X ∈ {'A' – 'Z', '0' – '9'}	
Unique ID	15	IMEI	
Device Name	<=10	'0' – '9' 'a' – 'z' 'A' – 'Z' ' ' ' _ '	
Duration of Ignition Off	<=6	0 – 999999 sec	
GPS Accuracy	<=2	0	0, Last known
Speed	<=5	0.0 – 999.9 km /h	
Azimuth	<=3	0 – 359	
Altitude	<=8	(-)xxxxx.x m	
Longitude	<=11	(-)xxx.xxxxxx	
Latitude	<=10	(-)xx.xxxxxx	
GPS UTC Time	14	YYYYMMDDHHMMSS	
MCC	4	0XXX	
MNC	4	0XXX	
LAC	4	XXXX	
Cell ID	4	XXXX	
Reserved	2	00	
Mileage	<=9	0.0 – 4294967.0 km	
Hour Meter Count	11	HHHHH:MM:SS	
Send Time	14	YYYYMMDDHHMMSS	
Count Number	4	0000 – FFFF	
Tail Character	1	\$	\$

✧ <Duration of Ignition Off>: Duration since last time the ignition is off. If greater than 999999 seconds, report as 999999 seconds.

✧ <Hour Meter Count>: If hour meter counter function is enabled by the command **AT+GTHMC**, total hours meter counted when engine is on will be reported in this field. If the function is disabled, this field will be reserved. It is formatted with 5 hour digits and 2 minute digits and 2 second digits and ranges from 00000:00:00– 99999:00:00.

➤ **+RESP:GTIGF,**

**Example:**

**+RESP:GTIGF,040100,135790246811220,,1200,0,4,3,92,70.0,121.354335,31.222073,20090214013254,0460,0000,18d8,6141,00,2000.0,,20090214093254,11F0\$**

+RESP:GTIGF,040100,135790246811220,,1200,0,4,3,92,70.0,121.354335,31.222073,20090214013254,0460,0000,18d8,6141,00,2000.0,12345:12:34,20090214093254,11F0\$			
Parameter	Length(byte)	Range/Format	Default
Protocol Version	6	XX0000 – XXFFFF, X ∈ {'A' – 'Z', '0' – '9'}	
Unique ID	15	IMEI	
Device Name	<=10	'0' – '9' 'a' – 'z' 'A' – 'Z' '-' '_'	
Duration of Ignition On	<=6	0 – 999999 sec	
GPS Accuracy	<=2	0	0, Last known
Speed	<=5	0.0 – 999.9 km /h	
Azimuth	<=3	0 – 359	
Altitude	<=8	(-)xxxxx.x m	
Longitude	<=11	(-)xxx.xxxxxx	
Latitude	<=10	(-)xx.xxxxxx	
GPS UTC Time	14	YYYYMMDDHHMMSS	
MCC	4	0XXX	
MNC	4	0XXX	
LAC	4	XXXX	
Cell ID	4	XXXX	
Reserved	2	00	
Mileage	<=9	0.0 – 4294967.0 km	
Hour Meter Count	11	HHHHH:MM:SS	
Send Time	14	YYYYMMDDHHMMSS	
Count Number	4	0000 – FFFF	
Tail Character	1	\$	\$

- ✧ <Duration of Ignition On>: Duration since last time the ignition is on. If greater than 999999 seconds, report as 999999 seconds.
- ✧ <Hour Meter Count>: If hour meter counter function is enabled by the command **AT+GTHMC**, total hours meter counted when engine is on will be reported in this field. If the function is disabled, this field will be filled with '00'. It is formatted with 5 hour digits and 2 minute digits and 2 second digits and ranges from 00000:00:00– 99999:00:00.

➤ **+RESP:GTIDN,****Example:**

**+RESP:GTIDN,040100,135790246811220,,,,0,4.3,92,70.0,121.354335,31.222073,20090214013254,0460,0000,18d8,6141,00,2000.0,20090214093254,11F0\$**

Parameter	Length(byte)	Range/Format	Default
Protocol Version	6	XX0000 – XXXFFF, X ∈ {'A' – 'Z','0' – '9'}	
Unique ID	15	IMEI	
Device Name	<=10	'0' – '9' 'a' – 'z' 'A' – 'Z' '-' '_'	
Reserved	0		
Reserved	0		
GPS Accuracy	<=2	0	0, Last known
Speed	<=5	0.0 – 999.9 km /h	
Azimuth	<=3	0 – 359	
Altitude	<=8	(-)xxxxx.x m	
Longitude	<=11	(-)xxx.xxxxxx	
Latitude	<=10	(-)xx.xxxxxx	
GPS UTC Time	14	YYYYMMDDHHMMSS	
MCC	4	0XXX	
MNC	4	0XXX	
LAC	4	XXXX	
Cell ID	4	XXXX	
Reserved	2	00	00
Mileage	<=9	0.0 – 4294967.0 km	
Send Time	14	YYYYMMDDHHMMSS	
Count Number	4	0000 – FFFF	
Tail Character	1	\$	\$

➤ **+RESP:GTIDF,****Example:**

**+RESP:GTIDF,040100,135790246811220,,22,300,0,4.3,92,70.0,121.354335,31.222073,20090214013254,0460,0000,18d8,6141,00,2000.0,20090214093254,11F0\$**

Parameter	Length(byte)	Range/Format	Default
Protocol Version	6	XX0000 – XXFFFF, X ∈ {'A' – 'Z','0' – '9'}	
Unique ID	15	IMEI	
Device Name	<=10	'0' – '9' 'a' – 'z' 'A' – 'Z' '-' ' ' '_'	
Motion State	2	11 12 16 22	
Duration of Idling Status	<=6	0 – 999999 sec	
GPS Accuracy	<=2	0	0, Last known
Speed	<=5	0.0 – 999.9 km /h	
Azimuth	<=3	0 – 359	
Altitude	<=8	(-)xxxxx.x m	
Longitude	<=11	(-)xxx.xxxxxx	
Latitude	<=10	(-)xx.xxxxxx	
GPS UTC Time	14	YYYYMMDDHHMMSS	
MCC	4	0XXX	
MNC	4	0XXX	
LAC	4	XXXX	
Cell ID	4	XXXX	
Reserved	2	00	00
Mileage	<=9	0.0 – 4294967.0 km	
Send Time	14	YYYYMMDDHHMMSS	
Count Number	4	0000 – FFFF	
Tail Character	1	\$	\$

- ✧ <Motion State>: The current motion state when the vehicle leaves idling status.
- ✧ <Duration of Idling Status>: The time that the vehicle has been in idling status. If greater than 999999 seconds, report as 999999 seconds.

**+RESP:GTGSM**

**Example:**  
**+RESP:GTGSM,080100,135790246811220,FRI,0460,0000,1878,0871,20,,0460,0000,1878,0152,16,,,,,,,,,,,,,,,,,,,,,0460,0000,1878,0873,57,00,20090214093254,11F0\$**

Parameter	Length(byte)	Range/Format	Default
-----------	--------------	--------------	---------

Protocol Version	6	XX0000 – XXFFFF, X ∈ {'A'-'Z','0'-'9'}	
Unique ID	15	IMEI	
Fix Type	3	SOS RTL LBC TOW FRI GI R	
MCC1	4	0XXX	
MNC1	4	0XXX	
LAC1	4		
Cell ID1	4		
RX Level1	2	0-63	
Reserved	0		
MCC2	4	0XXX	
MNC2	4	0XXX	
LAC2	4		
Cell ID2	4		
RX Level2	2	0-63	
Reserved	0		
MCC3	4	0XXX	
MNC3	4	0XXX	
LAC3	4		
Cell ID3	4		
RX Level3	2	0-63	
Reserved	0		
MCC4	4	0XXX	
MNC4	4	0XXX	
LAC4	4		
Cell ID4	4		
RX Level4	2	0-63	
Reserved	0		
MCC5	4	0XXX	
MNC5	4	0XXX	

LAC5	4		
Cell ID5	4		
RX Level5	2	0-63	
Reserved	0		
MCC6	4	0XXX	
MNC6	4	0XXX	
LAC6	4		
Cell ID6	4		
RX Level6	2	0-63	
Reserved	0		
MCC	4	0XXX	
MNC	4	0XXX	
LAC	4		
Cell ID	4		
RX Level	2	0-63	
Reserved	2	00	
Send Time	14	YYYYMMDDHHMMSS	
Count Number	4	0000 – FFFF	
Tail Character	1	\$	\$

- ✧ *<Fix Type>* : A string to indicate what kind of GPS fixing this cell information is for.
  - "SOS" This cell information is for SOS requirement.
  - "RTL" This cell information is for RTL requirement.
  - "LBC" This cell information is for LBC requirement.
  - "TOW" This cell information is for TOW requirement.
  - "FRI" This cell information is for FRI requirement.
  - "GIR" This cell information is for sub command "C" in **AT+GTRTO** command.
- ✧ *<MCC(i)>* : MCC of the neighbor cell *i* (*i* is the index of the neighbor cell).
- ✧ *<MNC(i)>* : MNC of the neighbor cell *i*.
- ✧ *<LAC(i)>* : LAC in hex format of the neighbor cell *i*.
- ✧ *<Cell ID(i)>* : Cell ID in hex format of the neighbor cell *i*.
- ✧ *<RX Level(i)>* : The signal strength of the neighbor cell *i*. This parameter is a 6-bit coded in 1 dB steps:
  - 0: -110 dBm
  - 1 to 62: -109 to -48 dBm
  - 63: -47 dBm



- ✧ <MCC>: MCC of the service cell.
- ✧ <MNC>: MNC of the service cell.
- ✧ <LAC>: LAC in hex format of the service cell.
- ✧ <Cell ID>: Cell ID in hex format of the service cell.
- ✧ <RX Level>: The signal strength of the service cell.

*Note:*

1. It probably includes only several neighbor cells' (even no neighbor cell) information. If some neighbor cell wasn't find, all the fields of the neighbor cell will be empty.
2. "ffff" in the field of <LAC(i)>, <Cell ID(i)> means the terminal doesn't know the value.
3. This message cannot be sent via SMS.

### 3.3.5. Buffer Report

If the buffer report function is enabled by command **AT+GTSRI**, the terminal will save the report messages in a local buffer when the following occurs.

- ✧ GSM network is not available
- ✧ Failed to activate GPRS context for the TCP or UDP connection.
- ✧ Failed to establish the TCP connection with the backend server.

These messages will be sent to the backend server when connection to the server recovers again. The terminal can buffer up to 3000 messages (160 bytes per message).

Detailed information about buffer report is listed below.

- ✧ Only **+RESP** messages are buffered except that **+RESP:GTALL** is not buffered
- ✧ In the buffer report, the original header string “**+RESP**” is replaced by “**+BUFF**” while keeps the other content untouched including the original sending time and count number.
- ✧ Buffered messages will be sent only via GPRS by TCP or UDP protocol. They cannot be sent via SMS. If the current report mode is forcing on SMS, the buffered messages will be sent via TCP short connection.
- ✧ The buffered messages will be sent after the other normal messages sending if *<Buffer Mode>* in **AT+GTSRI** is set to 1.
- ✧ The buffered messages will be sent before the other normal messages sending if *<Buffer Mode>* in **AT+GTSRI** is set to 0. The SOS message has the highest priority and is sent before the buffered messages.

**Example:**

The following is an example of the buffered message:

```
+BUFF:GTFRI,020100,135790246811220,,0,0,1,1,4.3,92,70.0,121.354335,31.222073,20090214013254,0460,0000,18d8,6141,00,,20090214093254,11F0$
```

### 3.3.6. Transparent Data Transmission

The device supports to transparently transfer data between the backend server and the peripheral device connected to its second serial port. GV200 supports bi-directional data transmission. In both directions, the data is transparent to the device.

a) Transfer data from the peripheral device to the backend server

According to the *<working mode>* of the command **AT+GTURT**, there are two ways for the peripheral device communicates with GV200.

1. If the peripheral device supports **AT+GTDAT** command, it can transfer data via this command. The peripheral device can send command **AT+GTDAT** with the data to the serial port. According to the *<command type>* of **AT+GTDAT**, The device wrap the corresponding data format into backend server with **+RESP: GTDAT** message either in short format or in long format.

2. GV200 support to transfer data for specific RFID card reader connected to its second serial port. The data from the RFID card reader is sent to the backend server with **+RESP: GTDAT** message in long format.

b) Transfer data from the backend server to the peripheral device

If the backend server needs to send data to the peripheral device, it can send command **AT+GTDAT** with the data to GV200 and GV200 will pick out the pure data and send it to the second serial port. Thus the peripheral device can get the data from the serial port.

Data to the backend server

➤ **+RESP:GTDAT(Short Format),**

<b>Example:</b> <b>+RESP:GTDAT,04031B,135790246811220,,data,20111222122137,0017\$</b>			
Parameter	Length(byte)	Range/Format	Default
Protocol Version	6	XX0000 – XXXFFF, X ∈ {'A' – 'Z', '0' – '9'}	
Unique ID	15	IMEI	
Device Name	<=10	'0' – '9' 'a' – 'z' 'A' – 'Z' '-' '_'	
Data to the Backend Server	<=100	ASCII Code	
Send Time	14	YYYYMMDDHHMMSS	
Count Number	4	0000 – FFFF	
Tail Character	1	\$	\$

➤ **+RESP:GTDAT (Long Format)**

<b>Example:</b> <b>+RESP:GTDAT,04031B,135790246811220,,3,,1645026150,0,0.5,0,29.4,121.390923,31.164295,20111222022935,0460,0000,1806,2142,00,,,,,20111222022938,001A\$</b>
---

Parameter	Length(byte)	Range/Format	Default
Protocol Version	6	XX0000 – XXFFFF, X ∈ {'A' – 'Z', '0' – '9'}	
Unique ID	15	IMEI	
Device Name	<=10	'0' – '9' 'a' – 'z' 'A' – 'Z' '-' '_'	
Report Type	1	0 1 2 3	
Reserved	0		
Reserved	0		
Data to the Backend Server	<=100	ASCII Code	
GPS Accuracy	<=2	0	0, Last known
Speed	<=5	0.0 – 999.9 km /h	
Azimuth	<=3	0 – 359	
Altitude	<=8	(-)xxxxx.x m	
Longitude	<=11	(-)xxx.xxxxxx	
Latitude	<=10	(-)xx.xxxxxx	
GPS UTC Time	14	YYYYMMDDHHMMSS	
MCC	4	0XXX	
MNC	4	0XXX	
LAC	4	XXXX	
Cell ID	4	XXXX	
Reserved	2	00	00
Reserved	0		
Reserved	0		
Reserved	0		
Reserved	0		
Send Time	14	YYYYMMDDHHMMSS	
Count Number	4	0000 – FFFF	
Tail Character	1	\$	\$

◇ <Report Type>: the value of <Report Type> refer to <Working Mode> of AT+GTURT.

- 0.Disable the second serial port.
- 1: AT+GTDAT.

- 2: Reserve.
- 3: RFID (special).

Data to the second serial port starts with a new line and is terminated with '\r\n'.

**Example:**  
**data to the serial port**

### 3.3.7. Report Google Maps Hyperlink

If *<Location By Call>* in command **AT+GTCFG** is set to 2, the device will send its current location position to the incoming call via SMS with Google Maps hyperlink.

#### ➤ Google Maps hyperlink

Example:			
gv200:			
<a href="http://maps.google.com/maps?q=31.222073,121.354335">http://maps.google.com/maps?q=31.222073,121.354335</a>			
F1 D2009/01/01T00:00:00>			
Parameter	Length(byte)	Range/Format	Default
Device Name	<=10	'0' - '9' 'a' - 'z' 'A' - 'Z' ' ' ' ' ' _	
Google Maps Hyperlink Header	30	http://maps.google.com/maps?q=	http://maps.google.com/maps?q=
Latitude	<=10	(-)xx.xxxxxx	
Longitude	<=11	(-)xxx.xxxxxx	
GPS Fix	<=3	F0 F1 - F50	
GPS UTC Time	20	DYYYY/MM/DDTHH:MM:SS	

✧ *<GPS Fix>*: The accuracy of the location information. F0 means no GPS fix.

### 3.4. Heartbeat

Heartbeat is used to maintain the contact between the device and the backend server if communicating via GPRS. The heartbeat package is sent to the backend server at the interval defined by *<Heartbeat interval>* in **AT+GTSRI** command.

➤ **+ACK:GTHBD**

<b>Example:</b> <b>+ACK:GTHBD,040100,135790246811220,,20100214093254,11F0\$</b>			
Parameter	Length(byte)	Range/Format	Default
Protocol version	6	XX0000 – XXXFFF, X ∈ {'A' – 'Z','0' – '9'}	
Unique ID	15	IMEI	
Device Name	≤10	'0' – '9' 'a' – 'z' 'A' – 'Z' '!' ' ' –	
Send Time	14	YYYYMMDDHHMMSS	
Count Number	4	0000 – FFFF	
Tail Character	1	\$	\$

Whenever the backend server receives a heartbeat package, it should reply an acknowledgement to the device.

➤ **+SACK:GTHBD**

<b>Example:</b> <b>+SACK:GTHBD,040100,11F0\$</b>			
Parameter	Length(byte)	Range/Format	Default
Protocol version	6	XX0000 – XXXFFF, X ∈ {'A' – 'Z','0' – '9'}	
Count Number	4	0000 – FFFF	
Tail Character	1	\$	\$

✧ *<Count Number>*: The backend server uses the *<Count Number>* extracted from the heartbeat package from the device as the *<Count Number>* in the server acknowledgement of the heartbeat.

### 3.5. Server Acknowledgement

If server acknowledgement is enabled by **AT+GTSRI** command, the backend server should reply to the device whenever it receives a message from the device.

➤ **+SACK:**

<b>Example:</b>			
<b>+SACK:11F0\$</b>			
<b>Parameter</b>	<b>Length(byte)</b>	<b>Range/Format</b>	<b>Default</b>
Count Number	4	0000 – FFFF	
Tail Character	1	\$	\$

- ✧ <Count Number>: The backend server uses the <Count Number> extracted from the received message as the <Count Number> in the server acknowledgement.



## 4. HEX Format Report Message

From this version, the @Tracker protocol starts to support report messages in HEX format. For all the commands, they are still using the ASCII format as described above. By default the device using ASCII format report messages. The backend server could use **AT+GTQSS** or **AT+GTSRI** command to enable the HEX format report messages by setting the *<Protocol Format>* to 1.

All the report messages are sorted into 5 categories and messages in the same category use the same header string, including acknowledgement to command (**+ACK**), location report (**+RSP**), event report (**+EVT**), information report (**+INF**) and the heartbeat data (**+HBD**).

The composition of the HEX report message could be customized by **AT+GTHRM** command. The actual length of each HEX report message varies depending on set some mask in **AT+GTHRM**.

The device uses CRC16 method to calculate the checksum of the report data and appends the checksum to the end of the data. The backend server could use this checksum to verify the integrity of the received data.

At the end of each HEX report message, the device uses 0x0D and 0x0A to mark the end.

The HEX report messages are transmitted in network byte order (big-endian).

#### 4.1. Hex Report Mask

AT+GTHRM command consists of *<+ACK Mask>*, *<+RSP Mask>*, *<+EVT Mask>*, *<+INF Mask>* and *<+HBD Mask>* to control the composition of the corresponding HEX report message. In each HEX report message, the corresponding mask for the report is involved to indicate which part is reported.

##### ➤ AT+GTHRM=

<b>Example:</b>			
<b>AT+GTHRM=gv200,,,FF,FFFFFFFF,FFFFFFFF,FFFF,FF,,,,,0018\$</b>			
Parameter	Length(byte)	Range/Format	Default
Password	4 – 6	'0' – '9' 'a' – 'z' 'A' – 'Z'	gv200
Reserved	0		
Reserved	0		
+ACK Mask	1	00 – FF	FF
+RSP Mask	4	00000000 – FFFFFFFF	FFFFFFFF
+EVT Mask	4	00000000 – FFFFFFFF	FFFFFFFF
+INF Mask	2	0000 – FFFF	FFFF
+HBD Mask	1	00 – FF	FF
Reserved	0		
Reserved	0		
Reserved	0		
Reserved	0		
Serial Number	4	0000 – FFFF	
Tail Character	1	\$	\$

✧ *<+ACK Mask>*: Component mask of the acknowledgement received.

Bit	Item to Mask
Bit 7	Reserved
Bit 6	<i>&lt;Count Number&gt;</i>
Bit 5	<i>&lt;Send Time&gt;</i>

<b>Bit 4</b>	<Device Name>
<b>Bit 3</b>	<Firmware Version>
<b>Bit 2</b>	<Protocol Version>
<b>Bit 1</b>	<Device Type>
<b>Bit 0</b>	<Length>

✧ <+RSP Mask>: Component mask of the location report message.

<b>Bit</b>	<b>Item to Mask</b>
<b>Bit 31</b>	Reserved
<b>Bit 30</b>	Reserved
<b>Bit 29</b>	Reserved
<b>Bit 28</b>	Reserved
<b>Bit 27</b>	Reserved
<b>Bit 26</b>	Reserved
<b>Bit 25</b>	Reserved
<b>Bit 24</b>	<RFID>
<b>Bit 23</b>	<Total Hour Meter Count>
<b>Bit 22</b>	<Current Hour Meter Count>
<b>Bit 21</b>	<Total Mileage>
<b>Bit 20</b>	<Current Mileage>
<b>Bit 19</b>	<GPS Antenna And Satellites Information>
<b>Bit 18</b>	<Motion Status>
<b>Bit 17</b>	<Digital IO Status>
<b>Bit 16</b>	<Analog Input3 Voltage>
<b>Bit 15</b>	<Analog Input2 Voltage>
<b>Bit 14</b>	<Analog Input1 Voltage>
<b>Bit 13</b>	Reserved
<b>Bit 12</b>	<External Power Supply Voltage>
<b>Bit 11</b>	Reserved
<b>Bit 10</b>	<Firmware Version>

<b>Bit 9</b>	<Protocol Version>
<b>Bit 8</b>	<Device Type>
<b>Bit 7</b>	<Length>
<b>Bit 6</b>	<Device Name>
<b>Bit 5</b>	<Count Number>
<b>Bit 4</b>	<Send Time>
<b>Bit 3</b>	<MCC/MNC/LAC/Cell ID/Reserved>
<b>Bit 2</b>	<Altitude>
<b>Bit 1</b>	<Azimuth>
<b>Bit 0</b>	<Speed>

✧ <+EVT Mask>: Component mask of the event report message.

<b>Bit</b>	<b>Item to Mask</b>
<b>Bit 31</b>	Reserved
<b>Bit 30</b>	Reserved
<b>Bit 29</b>	Reserved
<b>Bit 28</b>	Reserved
<b>Bit 27</b>	Reserved
<b>Bit 26</b>	Reserved
<b>Bit 25</b>	Reserved
<b>Bit 24</b>	<RFID>
<b>Bit 23</b>	<Total Hour Meter Count>
<b>Bit 22</b>	<Current Hour Meter Count>
<b>Bit 21</b>	<Total Mileage>
<b>Bit 20</b>	<Current Mileage>
<b>Bit 19</b>	<GPS Antenna And Satellites Information>
<b>Bit 18</b>	<Motion Status>
<b>Bit 17</b>	<Digital IO Status>
<b>Bit 16</b>	<Analog Input3 Voltage>
<b>Bit 15</b>	<Analog Input2 Voltage>

<b>Bit 14</b>	<Analog Input1 Voltage>
<b>Bit 13</b>	Reserved
<b>Bit 12</b>	<External Power Supply Voltage>
<b>Bit 11</b>	Reserved
<b>Bit 10</b>	<Firmware Version>
<b>Bit 9</b>	<Protocol Version>
<b>Bit 8</b>	<Device Type>
<b>Bit 7</b>	<Length>
<b>Bit 6</b>	<Device Name>
<b>Bit 5</b>	<Count Number>
<b>Bit 4</b>	<Send Time>
<b>Bit 3</b>	<MCC/MNC/LAC/Cell ID/Reserved>
<b>Bit 2</b>	<Altitude>
<b>Bit 1</b>	<Azimuth>
<b>Bit 0</b>	<Speed>

- ✧ <+INF Mask>: Component mask of the information report message. Bit 8 to Bit 15 indicate which group of items is included when reporting message other than +RESP:GTINF.

<b>Bit</b>	<b>Item to Mask</b>
<b>Bit 15</b>	+RESP:GTGSM
<b>Bit 14</b>	+RESP:GTTMZ
<b>Bit 13</b>	+RESP:GTCSQ
<b>Bit 12</b>	+RESP:GTCID
<b>Bit 11</b>	+RESP:GTBAT
<b>Bit 10</b>	+RESP:GTGPS
<b>Bit 9</b>	+RESP:GTIOS
<b>Bit 8</b>	+RESP:GTVER
<b>Bit 7</b>	Reserved
<b>Bit 6</b>	<Count Number>
<b>Bit 5</b>	<Send Time>
<b>Bit 4</b>	<Firmware Version>

<b>Bit 3</b>	<Protocol Version>
<b>Bit 2</b>	<Device Type>
<b>Bit 1</b>	<Device Name>
<b>Bit 0</b>	<Length>

✧ <+HBD Mask>: Component mask of the heartbeat data..

Bit	Item to Mask
<b>Bit 7</b>	<UID>
<b>Bit 6</b>	<Count Number>
<b>Bit 5</b>	<Send Time>
<b>Bit 4</b>	<Device Name>
<b>Bit 3</b>	<Firmware Version>
<b>Bit 2</b>	<Protocol Version>
<b>Bit 1</b>	<Device Type>
<b>Bit 0</b>	<Length>

The acknowledgment message of AT+GTHRM command:

➤ +ACK:GTHRM,

Example:			
+ACK:GTHRM,040100,135790246811220,,0019,20090214093254,11F0\$			
Parameter	Length(byte)	Range/Format	Default
Protocol Version	6	XX0000 – XXFFFF, X ∈ {'A' – 'Z','0' – '9'}	
Unique ID	15	IMEI	
Device Name	<=10	'0' – '9' 'a' – 'z' 'A' – 'Z' ' ' ' _ '	
Serial Number	4	0000 – FFFF	
Send Time	14	YYYYMMDDHHMMSS	
Count Number	4	0000 – FFFF	
Tail Character	1	\$	\$

## 4.2. Acknowledgement +ACK

➤ +ACK,

<b>Example:</b>			
<b>2B 41 43 4B 22 FB 22 01 0C 01 67 76 32 30 30 00 00 00 00 18 07 DC 01 1E 09 28 31 00 12 D9 AE 0D 0A</b>			
Parameter	Length(byte)	Range/Format	Default
Message Header	4	+ACK	+ACK
Message Type	1		
Report Mask	1	00 – FF	
Length	1		
Device Type	1		04
Protocol Version	2	0000 – FFFF	
Firmware Version	2	0000 – FFFF	
Unique ID	8	IMEI/Device Name	
ID	1		
Serial Number	2	0000 – FFFF	
Send Time	7	YYYYMMDDHHMMSS	
Count Number	2	0000 – FFFF	
Checksum	2	0000 – FFFF	
Tail Characters	2	0x0D 0x0A	0x0D 0x0A

✧ <Message Type>: The ID of the command that the device received.

Command	ID
AT+GTBSI	0
AT+GTSRI	1
AT+GTQSS	2
AT+GTCFG	4
AT+GTTOW	5
AT+GTAIS	6
AT+GTDIS	7
AT+GTOUT	8
AT+GTIOB	9

<b>AT+GTTMA</b>	10
<b>AT+GTFRI</b>	11
<b>AT+GTGEO</b>	12
<b>AT+GTSPD</b>	13
<b>AT+GTSOS</b>	14
<b>AT+GTMON</b>	15
<b>AT+GTRTO</b>	16
<b>AT+GTUPD</b>	21
<b>AT+GTPIN</b>	22
<b>AT+GTDAT</b>	23
<b>AT+GTOWH</b>	24
<b>AT+GTD0G</b>	25
<b>AT+GTMAI</b>	26
<b>AT+GTIDL</b>	27
<b>AT+GTHBM</b>	28
<b>AT+GTHMC</b>	29
<b>AT+GTURT</b>	31
<b>AT+GTWLT</b>	32
<b>AT+GTBCS</b>	33
<b>AT+GTHRM</b>	34

- ✧ *<Report Mask>*: It refer to the *<+ACK Mask>* in **AT+GTHRM**.
- ✧ *<Length>*: The whole length of the acknowledgement message header to the tail characters.
- ✧ *<Unique ID>*: If the Bit 4 of *<+ACK Mask>* is 0, IMEI of the device as the unique ID of the device. IMEI is a 15-digit string. In the HEX format message, each 2 digits are encoded into one byte as an integer.

<b>IMEI</b>	<b>13</b>	<b>57</b>	<b>90</b>	<b>24</b>	<b>68</b>	<b>11</b>	<b>22</b>	<b>0</b>
<b>HEX</b>	<b>0D</b>	<b>39</b>	<b>5A</b>	<b>18</b>	<b>44</b>	<b>0B</b>	<b>16</b>	<b>00</b>

If the Bit 4 of *<+ACK Mask>* is 1, use the device name as the unique ID of the device. The device name refer to the *<Device Name>* in **AT+GTCFG**. Device name is 8-bytes string, if the length of the *<Device Name>* is more than 8 bytes, it will only acquire the first 8 bytes. In the Hex format message, each byte is encoded into one byte as an integer. If the device name is less than 8 bytes, the rest of bytes set as 0.

<b>Device Name</b>	<b>g</b>	<b>v</b>	<b>2</b>	<b>0</b>	<b>0</b>			
--------------------	----------	----------	----------	----------	----------	--	--	--



HEX	67	76	32	30	30	00	00	00
-----	----	----	----	----	----	----	----	----

- ✧ <ID>: Sub-command ID of **AT+GTRTO** or the ID of **AT+GTIOB** and **AT+GTGEO**, for others, set to 0.
- ✧ <Send Time>: The local time to send the acknowledgement message. Total 7 bytes. The first 2 bytes are for year, the rest 5 bytes for month, day, hour, minute and second respectively.

Send Time	2011	01	31	06	29	11	
HEX	07	DB	01	1F	06	1D	0B

- ✧ <Checksum>: The CRC16 checksum for data from <Message Type> to <Count Number>.

### 4.3. Location Report +RSP

Location report messages including +RESP:GTTOW, +RESP:GTAIS, +RESP:GTDIS, +RESP:GTIOB, +RESP:GTFRI, +RESP:GTGEO, +RESP:GTSPD, +RESP:GTRTL, +RESP:GTDG, +RESP:GTIGL, +RESP:GTHBM and +RESP:GTMAI use this format.

➤ +RSP,

**Example:**

```
2B 52 53 50 0B FF FF FF BF 00 68 01 04 02 0C 01 23 5C 1F 03 43 23 1B 00 00 00 00 00 00 00
00 00 0C 00 41 18 00 01 01 00 00 00 00 00 00 0F 07 3C 46 8F 01 DB 89 BF 07 DC 01 1E 0A 08
1D 04 60 00 00 18 78 08 73 00 00 00 00 00 00 00 00 00 00 00 00 00 00 00 00 00 00 00
07 DC 01 1E 0A 08 1E 00 22 5D 1A 0D 0A
```

Parameter	Length(byte)	Range/Format	Default
Message Header	4	+RSP	+RSP
Message Type	1		
Report Mask	4	00000000 – FFFFFFFF	
Length	2		
Device Type	1		04
Protocol Version	2	0000 – FFFF	
Firmware Version	2	0000 – FFFF	
Unique ID	8	IMEI/Device Name	
External Power Supply Voltage	2		
Analog Input1 Voltage	2		
Analog Input2 Voltage	2		
Analog Input3 Voltage	2		
Digital Input Status	1	00 – 1F	
Digital Output Status	1	00 – 1F	
Motion Status	1	0x11   0x12 0x21   0x22 0x41   0x42 0x16	
External GPS Antenna Status   Satellites in View	1		

Report ID / Report Type	1		
Number	1	1 – 15	
GPS Accuracy	1	0 1 – 50	
Speed	3	0.0 – 999.9km/h	
Azimuth	2	0 – 359	
Altitude	2		
Longitude	4		
Latitude	4		
GPS UTC Time	7	YYYYMMDDHHMMSS	
MCC	2	0000 – FFFF	
MNC	2	0000 – FFFF	
LAC	2	0000 – FFFF	
Cell ID	2	0000 – FFFF	
Reserved	1	00	00
Current Mileage	3	0.0 – 65535.0 km	
Total Mileage	5	0.0 – 4294967.0 km	
Current Hour Meter Count	3	HHMMSS	
Total Hour Meter Count	6	HHHHHHHHMMSS	
RFID	4	00000000 – FFFFFFFF	
Send Time	7	YYYYMMDDHHMMSS	
Count Number	2	0000 – FFFF	
Checksum	2	0000 – FFFF	
Tail Characters	2	0x0D 0x0A	0x0D 0x0A

✧ *<Message Type>*: The ID of location report message.

Command	ID
<b>+RESP:GTTOW</b>	1
<b>+RESP:GTLBC</b>	3
<b>+RESP:GTAIS</b>	4
<b>+RESP:GTDIS</b>	5
<b>+RESP:GTIOB</b>	6
<b>+RESP:GTFRI</b>	7

<b>+RESP:GTGEO</b>	8
<b>+RESP:GTSPD</b>	9
<b>+RESP:GTSOS</b>	10
<b>+RESP:GTRTL</b>	11
<b>+RESP:GTDOG</b>	12
<b>+RESP:GTMAI</b>	13
<b>+RESP:GTHBM</b>	14
<b>+RESP:GTIGL</b>	15

- ✧ *<Report Mask>*: It refer to the *<+RSP Mask>* in **AT+GTHRM**.
- ✧ *<Unique ID>*: If the Bit 6 of *<+RSP Mask>* is 0, IMEI of the device as the unique ID of the device. IMEI is a 15-digit string. In the HEX format message, each 2 digits are encoded into one byte as an integer.

<b>IMEI</b>	<b>13</b>	<b>57</b>	<b>90</b>	<b>24</b>	<b>68</b>	<b>11</b>	<b>22</b>	<b>0</b>
<b>HEX</b>	<b>0D</b>	<b>39</b>	<b>5A</b>	<b>18</b>	<b>44</b>	<b>0B</b>	<b>16</b>	<b>00</b>

If the Bit 6 of *<+RSP Mask>* is 1, use the device name as the unique ID of the device. The device name refer to the *<Device Name>* in **AT+GTCFG**. Device name is 8-bytes string, if the length of the *<Device Name>* is more than 8 bytes, it will only acquire the first 8 bytes. In the Hex format message, each byte is encoded into one byte as an integer. If the device name is less than 8 bytes, the rest of bytes set as 0.

<b>IMEI</b>	<b>g</b>	<b>v</b>	<b>2</b>	<b>0</b>	<b>0</b>			
<b>HEX</b>	<b>67</b>	<b>76</b>	<b>32</b>	<b>30</b>	<b>30</b>	<b>00</b>	<b>00</b>	<b>00</b>

- ✧ *< External GPS Antenna Status / Satellites>*: The last 2 bits of the high nibble *<External GPS Antenna Status>* and the low nibble is for *<Satellites>*.
- ✧ *<Report ID / Report Type>*: The high nibble is for *<Report ID>* and the low nibble is for *<Report Type>*
- ✧ *<Speed>*: Total 3 bytes. The first 2 two bytes are for the integer part of the speed and the last byte is for the fraction part. The fraction part only has 1 digit.
- ✧ *<Longitude>*: The longitude of the current position. Total 4 bytes. Convert the longitude to an integer with 6 implicit decimals and report this integer in HEX format. If the value of the longitude is negative, it is represented in 2's complement format.

<b>Longitude</b>	<b>121390847</b>			
<b>121.390847</b>				
<b>HEX</b>	<b>07</b>	<b>3C</b>	<b>46</b>	<b>FF</b>

- ✧ *<Latitude>*: The latitude of the current position. Total 4 bytes. Convert the latitude to an

integer with 6 implicit decimals and report this integer in HEX format. If the value of the latitude is negative, it is represented in 2's complement format.

<b>Latitude</b> 31.164503	31164503			
<b>HEX</b>	01	DB	88	57

- ◇ <GPS UTC Time>: The UTC time from the GPS chip. Total 7 bytes. The first 2 bytes are for year, the rest 5 bytes for month, day, hour, minute and second respectively.

<b>GPS UTC Time</b>	2011	07	14	08	24	13
<b>HEX</b>	07	DB	07	0E	08	0D

- ◇ <Current Mileage>: Total 3 bytes. The first 2 bytes are for the integer part of the current mileage and the last byte is for the fraction part. The fraction part only has 1 digit.

<b>Current Mileage</b>	0	0
<b>HEX</b>	00	00

- ◇ <Total Mileage>: Total 5 bytes. The first 4 bytes are for the integer part of the total mileage and the last byte is for the fraction part. The fraction part only has 1 digit.

<b>Total Mileage</b>	0	0
<b>HEX</b>	00	00

- ◇ <Total Hour Meter Count>: Total 6 bytes. The first 4 bytes are the hour part, The fifth byte is the minute part. The sixth byte is the second part.

<b>Total Hour Meter Count</b>	0	0	0
<b>HEX</b>	00	00	00

- ◇ <RFID >: it consist of the special card id. Total 4 bytes.

<b>RFID</b>	0
<b>HEX</b>	00 00 00 00

Location report message for +RESP:GTLBC use below format

<b>Example:</b>			
2B 52 53 50 0B FF FF FF BF 00 68 01 04 02 0C 01 23 5C 1F 03 43 23 1B 00 00 00 00 00 00 00 00 0C 00 41 18 00 70 02 15 44 50 29 3F 01 01 00 00 00 00 00 00 0F 07 3C 46 8F 01 DB 89 BF 07 DC 01 1E 0A 08 1D 04 60 00 00 18 78 08 73 00 00 00 00 00 00 00 00 00 00 00 00 00 00 00 00 00 00 07 DC 01 1E 0A 08 1E 00 22 5D 1A 0D 0A			
Parameter	Length(byte)	Range/Format	Default
Message Header	4	+RSP	+RSP
Message Type	1		

Report Mask	4	00000000 – FFFFFFFF	
Length	2		
Device Type	1		04
Protocol Version	2	0000 – FFFF	
Firmware Version	2	0000 – FFFF	
Unique ID	8	IMEI	
External Power Supply Voltage	2		
Analog Input1 Voltage	2		
Analog Input2 Voltage	2		
Analog Input3 Voltage	2		
Digital Input Status	1	00 – 1F	
Digital Output Status	1	00 – 1F	
Motion Status	1	0x11   0x12 0x21   0x22 0x41   0x42 0x16	
External GPS Antenna Status   Satellites in View	1		
Report ID / Report Type	1		
Number Length / Number Type	1		
Phone Number	<=10		
Number	1	1 – 15	
GPS Accuracy	1	0 1 – 50	
Speed	3	0.0 – 999.9km/h	
Azimuth	2	0 – 359	
Altitude	2		
Longitude	4		
Latitude	4		
GPS UTC Time	7	YYYYMMDDHHMMSS	
MCC	2	0000 – FFFF	

MNC	2	0000 – FFFF	
LAC	2	0000 – FFFF	
Cell ID	2	0000 – FFFF	
Reserved	1	00	00
Current Mileage	3	0.0 – 65535.0 km	
Total Mileage	5	0.0 – 4294967.0 km	
Current Hour Meter Count	3	HHMMSS	
Total Hour Meter Count	6	HHHHHHHHMMSS	
RFID	4	00000000 – FFFFFFFF	
Send Time	7	YYYYMMDDHHMMSS	
Count Number	2	0000 – FFFF	
Checksum	2	0000 – FFFF	
Tail Characters	2	0x0D 0x0A	0x0D 0x0A

✧ *<Number Length / Number Type>*: The high nibble is for *<Number Length>* and the low nibble is for *<Number Type>*. *<Number Length>* is the number of byte used to represent the phone number including this byte. *<Number Type>* indicates if there is a '+' sign before the phone number. 1 means has the sign, 0 means no sign.

	Number Length	Number Type
HEX	7	0

✧ *<Phone Number>*: Not more than 10 bytes. In each byte, use the high nibble and low nibble to represent one digit of the phone number respectively. If the last low nibble has no digit to represent, fill in 0xF.

Phone Number	02	15	44	50	29	3
02154450293						
HEX	02	15	44	50	29	3F

Location report message for +RESP:GTSOS use below format

**Example:**

2B 52 53 50 0B FF FF FF BF 00 68 01 04 02 0C 01 23 5C 1F 03 43 23 1B 00 00 00 00 00 00 00 00 00 0C 00 41 18 00 55 01 01 00 00 00 00 00 00 0F 07 3C 46 8F 01 DB 89 BF 07 DC 01 1E 0A 08 1D 04 60 00 00 18 78 08 73 00 07 DC 01 1E 0A 08 1E 00 22 5D 1A 0D 0A

Parameter	Length(byte)	Range/Format	Default
Message Header	4	+RSP	+RSP

Message Type	1		
Report Mask	4	00000000 – FFFFFFFF	
Length	2		
Device Type	1		04
Protocol Version	2	0000 – FFFF	
Firmware Version	2	0000 – FFFF	
Unique ID	8	IMEI	
External Power Supply Voltage	2		
Analog Input1 Voltage	2		
Analog Input2 Voltage	2		
Analog Input3 Voltage	2		
Digital Input Status	1	00 – 1F	
Digital Output Status	1	00 – 1F	
Motion Status	1	0x11   0x12 0x21   0x22 0x41   0x42 0x16	
External GPS Antenna Status   Satellites in View	1		
Report ID / Report Type	1		
Mic Vol / Speaker Vol	1		
Number	1	1 – 15	
GPS Accuracy	1	0 1 – 50	
Speed	3	0.0 – 999.9km/h	
Azimuth	2	0 – 359	
Altitude	2		
Longitude	4		
Latitude	4		
GPS UTC Time	7	YYYYMMDDHHMMSS	
MCC	2	0000 – FFFF	
MNC	2	0000 – FFFF	



LAC	2	0000 – FFFF	
Cell ID	2	0000 – FFFF	
Reserved	1	00	00
Current Mileage	3	0.0 – 65535.0 km	
Total Mileage	5	0.0 – 4294967.0 km	
Current Hour Meter Count	3	HHMMSS	
Total Hour Meter Count	6	HHHHHHHHMMSS	
RFID	4	00000000 – FFFFFFFF	
Send Time	7	YYYYMMDDHHMMSS	
Count Number	2	0000 – FFFF	
Checksum	2	0000 – FFFF	
Tail Characters	2	0x0D 0x0A	0x0D 0x0A

- ✧ <Mic Vol / Speaker Vol>: the high nibble express current microphone volume and low nibble express current speaker volume.

#### 4.4. Information Report +INF

Information report messages include **+RESP:GTINF**, **+RESP:GTGPS**, **+RESP:GTCID**, **+RESP:GTCSQ**, **+RESP:GTVR**, **+RESP:GTBAT**, **+RESP:GTIOS** and **+RESP:GTTMZ**. **+RESP:GTGSM**, These messages use the same format as below, however only **+RESP:GTINF** includes all the items while others only include related information to themselves.

➤ **+INF**,

<b>Example:</b>			
2B 49 4E 46 01 FF FE 67 76 32 30 30 00 00 00 01 04 02 0C 01 01 03 01 01 00 00 00 00 00 00 0C 00 00 41 10 21 07 DC 01 1E 09 21 35 00 01 7F BF 00 1E 02 58 80 00 00 11 6A 89 86 00 91 09 11 69 00 46 01 14 00 00 00 00 04 60 00 00 18 78 08 73 00 26 07 DC 01 1E 09 25 23 00 10 1F 27 0D 0A			
Parameter	Length (byte)	Range/Format	Default
Message Header	4	+INF	+INF
Message Type	1		
Report Mask	2	0000 – FFFF	
Length	2		
Unique ID	8	IMEI/Device Name	
Device Type	1	04	<b>+RESP:GTVR</b>
Protocol Version	2	0000 – FFFF	
Firmware Version	2	0000 – FFFF	
Hardware Version	2	0000 – FFFF	
MCU Version	2	0000 – FFFF	
Reserved for GPS FW Version	2	0000	
Reserved for Analog Input Mode	1	00	
Analog Input1 Voltage	2		<b>+RESP:GTIOS</b>
Analog Input2 Voltage	2		
Analog Input3 Voltage	2		
Reserved for AT100 Input Mode	1	00	
Reserved for Temperature Sensor1	2	0000	
Reserved for Temperature Sensor2	2	0000	

Reserved for Temperature Sensor3	2	0000	
Digital Input Status	1	00 – 1F	
Digital Output Status	1	00 – 1F	
5V Output	1		
Motion Status	1	0x11   0x12 0x21   0x22 0x41   0x42 0x16	
Reserved fro ACJ Status	1	00	
External GPS Antenna Status   Satellites in View	1		
GPS on Need / Power Saving Enable / OWH Mode / Outside Working Hour	1		
Last Fix UTC Time	7	YYYYMMD DHHMMSS	<b>+RESP: GTGPS</b>
Reserved	1	00	
FRI Discard No Fix	1	0 1	
ResponseReport Items Mask	2		
IGN Interval	2		
IGF Interval	2		
Reserved for GEO Interval	4	00000000	
Reserved for GEO Status	1	00	
Main Supply / Backup Battery On / Charging / LED On / Backup Battery Charge Mode	1		
Main Supply VCC	2	0	<b>+RESP: GTBAT</b>
Backup Battery VCC	2	0 – 4500mV	
Backup Battery Level	1	00	
ICCID	10	ICCID	<b>+RESP: GTCID</b>
CSQ RSSI	1	0 – 31   99	<b>+RESP: GTCSQ</b>
CSQ BER	1	0 – 7   99	
Time Zone Offset Sign / Daylight Saving Enable	1		<b>+RESP: GTTMZ</b>
Time Zone Offset	2	HHMM	

GIR Trigger Type	1		<b>+RESP: GTGSM</b>
Cell Number	1		
MCC	2		
MNC	2		
LAC	2		
Cell ID	2		
TA	1		
RX Level	1		
Send Time	7	YYYYMMD DHHMMSS	
Count Number	2	0000 – FFFF	
Checksum	2	0000 – FFFF	
Tail Characters	2	0x0D 0x0A	0x0D 0x0A

✧ *<Message Type>*: The ID of information report message.

Command	ID
<b>+RESP:GTINF</b>	1
<b>+RESP:GTGPS</b>	2
<b>+RESP:GTCID</b>	4
<b>+RESP:GTCSQ</b>	5
<b>+RESP:GTVER</b>	6
<b>+RESP:GTBAT</b>	7
<b>+RESP:GTIOS</b>	8
<b>+RESP:GTTMZ</b>	9

✧ *<Report Mask>*: It refer to the *<+INF Mask>* in **AT+GTHRM**.

✧ *<Unique ID>*: If the Bit 1 of *<+INF Mask>* is 0, IMEI of the device as the unique ID of the device. IMEI is a 15-digit string. In the HEX format message, each 2 digits are encoded into one byte as an integer.

IMEI	13	57	90	24	68	11	22	0
HEX	0D	39	5A	18	44	0B	16	00

If the Bit 1 of *<+INF Mask>* is 1, use the device name as the unique ID of the device. The device name refer to the *<Device Name>* in **AT+GTCFG**. Device name is 8-bytes string, if

the length of the *<Device Name>* is more than 8 bytes, it will only acquire the first 8 bytes. In the Hex format message, each byte is encoded into one byte as an integer. If the device name is less than 8 bytes, the rest of bytes set as 0.

<b>IMEI</b>	<b>g</b>	<b>v</b>	<b>2</b>	<b>0</b>	<b>0</b>			
<b>HEX</b>	<b>67</b>	<b>76</b>	<b>32</b>	<b>30</b>	<b>30</b>	<b>00</b>	<b>00</b>	<b>00</b>

- ✧ *<GPS on Need / Power Saving Enable / OWH Mode / Outside Working Hour>*: The highest bit, bit 7 is for *<GPS on Need>*, bit 6 and bit 5 is for *<Power Saving Enable>*, bit 4 and bit 3 are for *<OWH Mode>*, bit 2 is for *<Outside Working Hour>*, *<Outside Working Hour>* is used to indicate whether the device is currently outside the working hour. 1 means outside.
- ✧ *<Main Supply / Backup Battery On / Charging / LED On / Backup Battery Charge Mode>*: The highest bit, bit 7 is for *<Main Supply>* to indicate whether the external power supply is connected to the device. Bit 6 is for *<Backup Battery On>* to indicate whether the backup battery is working. Bit 5 is for *<Charging>* to indicate whether the backup battery is currently charging. Bit 4 is for *<LED On>* to indicate whether the LED's are turned on. Bit 0 is for *<Backup Battery Charge Mode>*.
- ✧ *<ICCID>*: ICCID is a 20-digit string. In the HEX format message, every 4 bits are used to represent one digit of the 20 digits of the ICCID.

<b>ICCID</b>	<b>89</b>	<b>86</b>	<b>00</b>	<b>00</b>	<b>09</b>	<b>09</b>	<b>17</b>	<b>21</b>	<b>49</b>	<b>53</b>
<b>HEX</b>	<b>89</b>	<b>86</b>	<b>00</b>	<b>00</b>	<b>09</b>	<b>09</b>	<b>17</b>	<b>21</b>	<b>49</b>	<b>53</b>

- ✧ *<Time Zone Offset Sign / Daylight Saving Enable>*: Bit 1 is for *<Daylight Saving Enable>* to indicate whether the daylight saving function is currently enabled. Bit 0 is for *<Time Zone Offset Sign>* to indicate the positive or negative of the local time offset to UTC. 1 means negative.
- ✧ *<GIR Trigger Type>*: It refer to the *<Fix Type>* of **+RESP:GTGSM**.

#### 4.5. Event Report +EVT

Event report messages including +RESP:GTPNA, +RESP:GTPFA, +RESP:GTMPN, +RESP:GTMPF, +RESP:GTBTC, +RESP:GTSTC, +RESP:GTSTT, +RESP:GTPDP, +RESP:GTIDN use this format.

➤ +EVT,

**Example:**  
**2B 45 56 54 0A FF FF FF BF 00 67 01 04 02 0C 01 23 5C 1F 03 43 23 1B 00 00 00 00 00 00 00 00 00 00 0C 00 41 10 01 00 04 60 00 00 18 78 08 72 00 07 DC 01 1E 0A 08 06 00 20 7F F3 0D 0A**

Parameter	Length(byte)	Range/Format	Default
Message Header	4	+EVT	+EVT
Message Type	1		
Report Mask	4	00000000 – FFFFFFFF	
Length	2		
Device Type	1		04
Protocol Version	2	0000 – FFFF	
Firmware Version	2	0000 – FFFF	
Unique ID	8	IMEI/Device Name	
External Power Supply Voltage	2		
Analog Input1 Voltage	2		
Analog Input2 Voltage	2		
Analog Input3 Voltage	2		
Digital Input Status	1	00 – 1F	
Digital Output Status	1	00 – 1F	
Motion Status	1	0x11   0x12 0x21   0x22 0x41   0x42 0x16	
External GPS Antenna Status   Satellites in View	1		

Number	1	1	
GPS Accuracy	1	0	0
Speed	3	0.0 – 999.9km/h	
Azimuth	2	0 – 359	
Altitude	2		
Longitude	4		
Latitude	4		
GPS UTC Time	7	YYYYMMDDHHMMSS	
MCC	2	0000 – FFFF	
MNC	2	0000 – FFFF	
LAC	2	0000 – FFFF	
Cell ID	2	0000 – FFFF	
Reserved	1	00	00
Current Mileage	3	0.0 – 65535.0 km	
Total Mileage	5	0.0 – 4294967.0 km	
Current Hour Meter Count	3	HHMMSS	
Total Hour Meter Count	6	HHHHHHHHMMSS	
RFID	4	00000000 – FFFFFFFF	
Send Time	7	YYYYMMDDHHMMSS	
Count Number	2	0000 – FFFF	
Checksum	2	0000 – FFFF	
Tail Characters	2	0x0D 0x0A	0x0D 0x0A

✧ *<Message Type>*: The ID of event report message.

Command	ID
<b>+RESP:GTPNA</b>	1
<b>+RESP:GTPFA</b>	2
<b>+RESP:GTMPN</b>	3
<b>+RESP:GTMPF</b>	4
<b>+RESP:GTBPL</b>	6
<b>+RESP:GTBTC</b>	7
<b>+RESP:GTSTC</b>	8

<b>+RESP:GTSTT</b>	9
<b>+RESP:GTANT</b>	10
<b>Reserved</b>	11
<b>+RESP:GTPDP</b>	12
<b>+RESP:GTIGN</b>	13
<b>+RESP:GTIGF</b>	14
<b>+RESP:GTUPD</b>	15
<b>+RESP:GTIDN</b>	16
<b>+RESP:GTIDF</b>	17
<b>+RESP:GTDAT</b>	18
<b>+RESP:GTGSM</b>	19

- ✧ *<Report Mask>*: It refer to the *<+EVT Mask>* in **AT+GTHRM**.
- ✧ *<Unique ID>*: If the Bit 6 of *<+EVT Mask>* is 0, IMEI of the device as the unique ID of the device. IMEI is a 15-digit string. In the HEX format message, each 2 digits are encoded into one byte as an integer.

<b>IMEI</b>	<b>13</b>	<b>57</b>	<b>90</b>	<b>24</b>	<b>68</b>	<b>11</b>	<b>22</b>	<b>0</b>
<b>HEX</b>	<b>0D</b>	<b>39</b>	<b>5A</b>	<b>18</b>	<b>44</b>	<b>0B</b>	<b>16</b>	<b>00</b>

If the Bit 6 of *<+EVT Mask>* is 1, use the device name as the unique ID of the device. The device name refer to the *<Device Name>* in **AT+GTCFG**. Device name is 8-bytes string, if the length of the *<Device Name>* is more than 8 bytes, it will only acquire the first 8 bytes. In the Hex format message, each byte is encoded into one byte as an integer. If the device name is less than 8 bytes, the rest of bytes set as 0.

<b>IMEI</b>	<b>g</b>	<b>v</b>	<b>2</b>	<b>0</b>	<b>0</b>			
<b>HEX</b>	<b>67</b>	<b>76</b>	<b>32</b>	<b>30</b>	<b>30</b>	<b>00</b>	<b>00</b>	<b>00</b>

Event report message **+RESP:GTBPL** uses this format.

➤ **+EVT,**

<b>Example:</b>			
2B 45 56 54 0A FF FF FF BF 00 67 01 04 02 0C 01 23 5C 1F 03 43 23 1B 00 00 00 00 00 00 00 00 00 00 0C 00 41 10 00 00 01 00 04 60 00 00 18 78 08 72 00 07 DC 01 1E 0A 08 06 00 20 7F F3 0D 0A			
<b>Parameter</b>	<b>Length(byte)</b>	<b>Range/Format</b>	<b>Default</b>
Message Header	4	+EVT	+EVT



Message Type	1		
Report Mask	4	00000000 – FFFFFFFF	
Length	2		
Device Type	1		04
Protocol Version	2	0000 – FFFF	
Firmware Version	2	0000 – FFFF	
Unique ID	8	IMEI	
External Power Supply Voltage	2		
Analog Input1 Voltage	2		
Analog Input2 Voltage	2		
Analog Input3 Voltage	2		
Digital Input Status	1	00 – 1F	
Digital Output Status	1	00 – 1F	
Motion Status	1	0x11   0x12 0x21   0x22 0x41   0x42 0x16	
External GPS Antenna Status   Satellites in View	1		
Backup Battery VCC	2	0 – 4500 mV	
Number	1	1	
GPS Accuracy	1	0	0
Speed	3	0.0 – 999.9km/h	
Azimuth	2	0 – 359	
Altitude	2		
Longitude	4		
Latitude	4		
GPS UTC Time	7	YYYYMMDDHHMMSS	
MCC	2	0000 – FFFF	
MNC	2	0000 – FFFF	
LAC	2	0000 – FFFF	

Cell ID	2	0000 – FFFF	
Reserved	1	00	00
Current Mileage	3	0.0 – 65535.0 km	
Total Mileage	5	0.0 – 4294967.0 km	
Current Hour Meter Count	3	HHMMSS	
Total Hour Meter Count	6	HHHHHHHHMMSS	
RFID	4	00000000 – FFFFFFFF	
Send Time	7	YYYYMMDDHHMMSS	
Count Number	2	0000 – FFFF	
Checksum	2	0000 – FFFF	
Tail Characters	2	0x0D 0x0A	0x0D 0x0A

Event report message **+RESP:GTIGN** and **+RESP:GTIGF** use this format. For these two messages, the *<mileage>* field will always be present in spite of the *<Report Items Mask>* setting.

➤ **+EVT,**

<p><b>Example:</b>  <b>2B 45 56 54 0A FF FF FF BF 00 67 01 04 02 0C 01 23 5C 1F 03 43 23 1B 00 00 00 00 00 00 00 00 00 00 0C 00 41 10 00 00 00 D5 01 00 04 60 00 00 18 78 08 72 00 07 DC 01 1E 0A 08 06 00 20 7F F3 0D 0A</b></p>			
Parameter	Length(byte)	Range/Format	Default
Message Header	4	+EVT	+EVT
Message Type	1		
Report Mask	4	00000000 – FFFFFFFF	
Length	2		
Device Type	1		04
Protocol Version	2	0000 – FFFF	
Firmware Version	2	0000 – FFFF	
Unique ID	8	IMEI	
External Power Supply Voltage	2		
Analog Input1 Voltage	2		

Analog Input2 Voltage	2		
Analog Input3 Voltage	2		
Digital Input Status	1	00 – 1F	
Digital Output Status	1	00 – 1F	
Motion Status	1	0x11   0x12 0x21   0x22 0x41   0x42 0x16	
External GPS Antenna Status   Satellites in View	1		
Duration of Ignition On or Ignition Off	4	0 – 999999 sec	
Number	1	1	
GPS Accuracy	1	0	0
Speed	3	0.0 – 999.9km/h	
Azimuth	2	0 – 359	
Altitude	2		
Longitude	4		
Latitude	4		
GPS UTC Time	7	YYYYMMDDHHMMSS	
MCC	2	0000 – FFFF	
MNC	2	0000 – FFFF	
LAC	2	0000 – FFFF	
Cell ID	2	0000 – FFFF	
Reserved	1	00	00
Current Mileage	3	0.0 – 65535.0 km	
Total Mileage	5	0.0 – 4294967.0 km	
Current Hour Meter Count	3	HHMMSS	
Total Hour Meter Count	6	HHHHHHHHMMSS	
RFID	4	00000000 – FFFFFFFF	
Send Time	7	YYYYMMDDHHMMSS	
Count Number	2	0000 – FFFF	

Checksum	2	0000 – FFFF	
Tail Characters	2	0x0D 0x0A	0x0D 0x0A

Event report message **+RESP:GTUPD** uses this format. For this message, the *<Protocol Version>* and *<Firmware Version>* will always be present in spite of the *<Report Items Mask>* setting

➤ **+EVT,**

**Example:**

**2B 45 56 54 0F FF FF FF BF 00 67 01 04 02 0C 01 23 5C 1F 03 43 23 1B 00 00 00 00 00 00 00 00 00 00 0C 00 41 10 00 64 00 01 00 04 60 00 00 18 78 08 72 00 07 DC 01 1E 0A 08 06 00 20 7F F3 0D 0A**

Parameter	Length(byte)	Range/Format	Default
Message Header	4	+EVT	+EVT
Message Type	1		
Report Mask	4	00000000 – FFFFFFFF	
Length	2		
Device Type	1		04
Protocol Version	2	0000 – FFFF	
Firmware Version	2	0000 – FFFF	
Unique ID	8	IMEI	
External Power Supply Voltage	2		
Analog Input1 Voltage	2		
Analog Input2 Voltage	2		
Analog Input3 Voltage	2		
Digital Input Status	1	00 – 1F	
Digital Output Status	1	00 – 1F	
Motion Status	1	0x11   0x12 0x21   0x22 0x41   0x42 0x16	
External GPS Antenna Status	1		

Satellites in View			
Code	2		
Retry	1		
Number	1	1	
GPS Accuracy	1	0	0
Speed	3	0.0 – 999.9km/h	
Azimuth	2	0 – 359	
Altitude	2		
Longitude	4		
Latitude	4		
GPS UTC Time	7	YYYYMMDDHHMMSS	
MCC	2	0000 – FFFF	
MNC	2	0000 – FFFF	
LAC	2	0000 – FFFF	
Cell ID	2	0000 – FFFF	
Reserved	1	00	00
Current Mileage	3	0.0 – 65535.0 km	
Total Mileage	5	0.0 – 4294967.0 km	
Current Hour Meter Count	3	HHMMSS	
Total Hour Meter Count	6	HHHHHHHHMMSS	
RFID	4	00000000 – FFFFFFFF	
Send Time	7	YYYYMMDDHHMMSS	
Count Number	2	0000 – FFFF	
Checksum	2	0000 – FFFF	
Tail Characters	2	0x0D 0x0A	0x0D 0x0A

Event report message +**RESP:GTIDF** uses this format.

➤ +EVT,

**Example:**

**2B 45 56 54 11 FF FF FF BF 00 67 01 04 02 0C 01 23 5C 1F 03 43 23 1B 00 00 00 00 00 00 00**

00 00 0C 00 41 10 00 64 00 01 00 04 60 00 00 18 78 08 72 00 07 DC 01 1E 0A 08 06 00 20 7F F3 0D 0A			
Parameter	Length(byte)	Range/Format	Default
Message Header	4	+EVT	+EVT
Message Type	1		
Report Mask	4	00000000 – FFFFFFFF	
Length	2		
Device Type	1		04
Protocol Version	2	0000 – FFFF	
Firmware Version	2	0000 – FFFF	
Unique ID	8	IMEI	
External Power Supply Voltage	2		
Analog Input1 Voltage	2		
Analog Input2 Voltage	2		
Analog Input3 Voltage	2		
Digital Input Status	1	00 – 1F	
Digital Output Status	1	00 – 1F	
Motion Status	1	0x11   0x12 0x21   0x22 0x41   0x42 0x16	
External GPS Antenna Status   Satellites in View	1		
Duration of Idling	4		
Number	1	1	
GPS Accuracy	1	0	0
Speed	3	0.0 – 999.9km/h	
Azimuth	2	0 – 359	
Altitude	2		
Longitude	4		

Latitude	4		
GPS UTC Time	7	YYYYMMDDHHMMSS	
MCC	2	0000 – FFFF	
MNC	2	0000 – FFFF	
LAC	2	0000 – FFFF	
Cell ID	2	0000 – FFFF	
Reserved	1	00	00
Current Mileage	3	0.0 – 65535.0 km	
Total Mileage	5	0.0 – 4294967.0 km	
Current Hour Meter Count	3	HHMMSS	
Total Hour Meter Count	6	HHHHHHHHMMSS	
RFID	4	00000000 – FFFFFFFF	
Send Time	7	YYYYMMDDHHMMSS	
Count Number	2	0000 – FFFF	
Checksum	2	0000 – FFFF	
Tail Characters	2	0x0D 0x0A	0x0D 0x0A

Event report message +**RESP:GTDAT** uses this format.

➤ +**EVT**,

<b>Example:</b>			
<b>2B 45 56 54 12 FF FF FF BF 00 67 01 04 02 0C 01 23 5C 1F 03 43 23 1B 00 00 00 00 00 00 00 00 0C 00 41 10 00 64 00 01 00 04 60 00 00 18 78 08 72 00 07 DC 01 1E 0A 08 06 00 20 7F F3 0D 0A</b>			
<b>Parameter</b>	<b>Length(b yte)</b>	<b>Range/Format</b>	<b>Default</b>
Message Header	4	+EVT	+EVT
Message Type	1		
Report Mask	4	00000000 – FFFFFFFF	
Length	2		
Device Type	1		04
Protocol Version	2	0000 – FFFF	

Firmware Version	2	0000 – FFFF	
Unique ID	8	IMEI	
External Power Supply Voltage	2		
Analog Input1 Voltage	2		
Analog Input2 Voltage	2		
Analog Input3 Voltage	2		
Digital Input Status	1	00 – 1F	
Digital Output Status	1	00 – 1F	
Motion Status	1	0x11   0x12 0x21   0x22 0x41   0x42 0x16	
External GPS Antenna Status   Satellites in View	1		
data			
Number	1	1	
GPS Accuracy	1	0	0
Speed	3	0.0 – 999.9km/h	
Azimuth	2	0 – 359	
Altitude	2		
Longitude	4		
Latitude	4		
GPS UTC Time	7	YYYYMMDDHHMMSS	
MCC	2	0000 – FFFF	
MNC	2	0000 – FFFF	
LAC	2	0000 – FFFF	
Cell ID	2	0000 – FFFF	
Reserved	1	00	00
Current Mileage	3	0.0 – 65535.0 km	
Total Mileage	5	0.0 – 4294967.0 km	
Current Hour Meter Count	3	HHMMSS	



Total Hour Meter Count	6	HHHHHHHHMMSS	
RFID	4	00000000 – FFFFFFFF	
Send Time	7	YYYYMMDDHHMMSS	
Count Number	2	0000 – FFFF	
Checksum	2	0000 – FFFF	
Tail Characters	2	0x0D 0x0A	0x0D 0x0A

Event report message +**RESP:GTGSM** uses this format.

➤ +EVT,

<b>Example:</b>			
<b>2B 45 56 54 13 FF FF FF BF 00 67 01 04 02 0C 01 23 5C 1F 03 43 23 1B 00 00 00 00 00 00 00 00 00 00 0C 00 41 10 00 64 00 01 00 04 60 00 00 18 78 08 72 00 07 DC 01 1E 0A 08 06 00 20 7F F3 0D 0A</b>			
Parameter	Length(byte)	Range/Format	Default
Message Header	4	+EVT	+EVT
Message Type	1		
Report Mask	4	00000000 – FFFFFFFF	
Length	2		
Device Type	1		04
Protocol Version	2	0000 – FFFF	
Firmware Version	2	0000 – FFFF	
Unique ID	8	IMEI	
Fix Type	1		
Cell Number	1		
MCC	2	0000 – FFFF	
MNC	2	0000 – FFFF	
LAC	2	0000 – FFFF	0
Cell ID	2	0000 – FFFF	
TA	1	00	
RX Level	1		

Send Time	7	YYYYMMDDHHMMSS	
Count Number	2	0000 – FFFF	
Checksum	2	0000 – FFFF	
Tail Characters	2	0x0D 0x0A	0x0D 0x0A

✧ *<Fix Type>* : A string to indicate what kind of GPS fixing this cell information is for.

"SOS" This cell information is for SOS requirement.

"RTL" This cell information is for RTL requirement.

"LBC" This cell information is for LBC requirement.

"TOW" This cell information is for TOW requirement.

"FRI" This cell information is for FRI requirement.

"GIR" This cell information is for sub command "C" in AT+GTRTO command.

Fix Type	ID
SOS	1
RTL	2
LBC	3
TOW	4
FRI	5
GIR	6

## 4.6. Heartbeat Data +HBD

### ➤ +HBD,

<b>Example:</b>			
<b>2B 48 42 44 EB 1E 01 0C 01 23 5C 1F 03 43 23 1B 00 07 DC 01 1E 09 20 26 00 0D E2 9C 0D 0A</b>			
Parameter	Length(byte)	Range/Format	Default
Message Header	4	+HBD	+HBD
Report Mask	1	00 – FF	
Length	1		
Device Type	1		04
Protocol Version	2	0000 – FFFF	
Firmware Version	2	0000 – FFFF	
Unique ID	8	IMEI/Device Name	
Send Time	7	YYYYMMDDHHMMSS	
Count Number	2	0000 – FFFF	
Checksum	2	0000 – FFFF	
Tail Characters	2	0x0D 0x0A	0x0D 0x0A

- ✧ *<Report Mask>*: It refer to the *<+HBD Mask>* in **AT+GTHRM**.
- ✧ *<Unique ID>*: If the Bit 4 of *<+HBD Mask>* is 0, IMEI of the device as the unique ID of the device. IMEI is a 15-digit string. In the HEX format message, each 2 digits are encoded into one byte as an integer.

<b>IMEI</b>	<b>13</b>	<b>57</b>	<b>90</b>	<b>24</b>	<b>68</b>	<b>11</b>	<b>22</b>	<b>0</b>
<b>HEX</b>	<b>0D</b>	<b>39</b>	<b>5A</b>	<b>18</b>	<b>44</b>	<b>0B</b>	<b>16</b>	<b>00</b>

If the Bit 4 of *<+HBD Mask>* is 1, use the device name as the unique ID of the device. The device name refer to the *<Device Name>* in **AT+GTCFG**. Device name is 8-bytes string, if the length of the *<Device Name>* is more than 8 bytes, it will only acquire the first 8 bytes. In the Hex format message, each byte is encoded into one byte as an integer. If the device name is less than 8 bytes, the rest of bytes set as 0.

<b>IMEI</b>	<b>g</b>	<b>v</b>	<b>2</b>	<b>0</b>	<b>0</b>			
<b>HEX</b>	<b>67</b>	<b>76</b>	<b>32</b>	<b>30</b>	<b>30</b>	<b>00</b>	<b>00</b>	<b>00</b>

If the mask of <UID> set as 0 in the <+HBD Mask> of **AT+GTHRM**, the heart beat message will not report device name or IMEI information. If the mask of <UID> is set as 1, then according to the mask of <device name>, the heart beat message will report device name or IMEI information

#### 4.7. Buffer Report in HEX Format

When HEX format messages go into the local buffer, the device will replace the 2nd byte of the report messages with 'B'. Thus, **+BSP** is buffered report for **+RSP**, **+BNF** is buffered report for **+INF** and **+BVT** is buffered report for **+EVT**. The rest part of the report messages keep untouched.

## Appendix: Message Index

✧ Command and ACK

AT+GTBSI

+ACK:GTBSI

AT+GTSRI

+ACK:GTSRI

AT+GTQSS

+ACK:GTQSS

AT+GTCFG

+ACK:GTCFG

AT+GTTOW

+ACK:GTTOW

AT+GTOUT

+ACK:GTOUT

AT+GTAIS

+ACK:GTAIS

AT+GTDIS

+ACK:GTDIS

AT+GTIOB

+ACK:GTIOB

AT+GTTMA

+ACK:GTTMA

AT+GTFRI

+ACK:GTFRI

AT+GTGEO

+ACK:GTGEO

AT+GTSPD

+ACK:GTSPD

AT+GTSOS

+ACK:GTSOS

AT+GTMON

+ACK:GTMON

AT+GTRTO

+ACK:GTRTO

AT+GTPIN

+ACK:GTPIN

AT+GTURT

+ACK:GTURT

AT+GTDAT

+ACK:GTDAT

AT+GTOWH

+ACK:GTOWH

AT+GTD0G  
+ACK:GTD0G  
AT+GTMAI  
+ACK:GTMAI  
AT+GTIDL  
+ACK:GTIDL  
AT+GTHMC  
+ACK:GTHMC  
AT+GTHBM  
+ACK:GTHBM  
AT+GTWLT  
+ACK:GTWLT  
AT+GTBCS  
+ACK:GTBCS  
AT+GTHRM  
+ACK:GTHRM

## ✧ Position Related Report

+RESP:GTTOW  
+RESP:GTAIS  
+RESP:GTDIS  
+RESP:GTIOB  
+RESP:GTFRI  
+RESP:GTGEO  
+RESP:GTSPD  
+RESP:GTSOS  
+RESP:GTRTL  
+RESP:GTLBC  
+RESP:GTD0G  
+RESP:GTMAI  
+RESP:GTIGL  
+RESP:GTHBM

## ✧ Device Information Report

+RESP:GTINF

## ✧ Report for Querying

+RESP:GTGPS  
+RESP:GTALL  
+RESP:GTCID  
+RESP:GTCSQ  
+RESP:GTVER  
+RESP:GTBAT

+RESP:GTIOS  
+RESP:GTTMZ

✧ Event Report

+RESP:GTPNA  
+RESP:GTPFA  
+RESP:GTMPN  
+RESP:GTMPF  
+RESP:GTBTC  
+RESP:GTSTC  
+RESP:GTBPL  
+RESP:GTSTT  
+RESP:GTANT  
+RESP:GTMON  
+RESP:GTPDP  
+RESP:GTIGN  
+RESP:GTIGF  
+RESP:GTDAT (Short Format)  
+RESP:GTDAT (Long Format)  
+RESP:GTIDN  
+RESP:GTIDF  
+RESP:GTGSM

✧ Heartbeat

+ACK:GTHBD  
+SACK:GTHBD

✧ Server Acknowledgement

+SACK

✧ Hex format report message

+ACK  
+RSP  
+EVT  
+INF  
+HBD